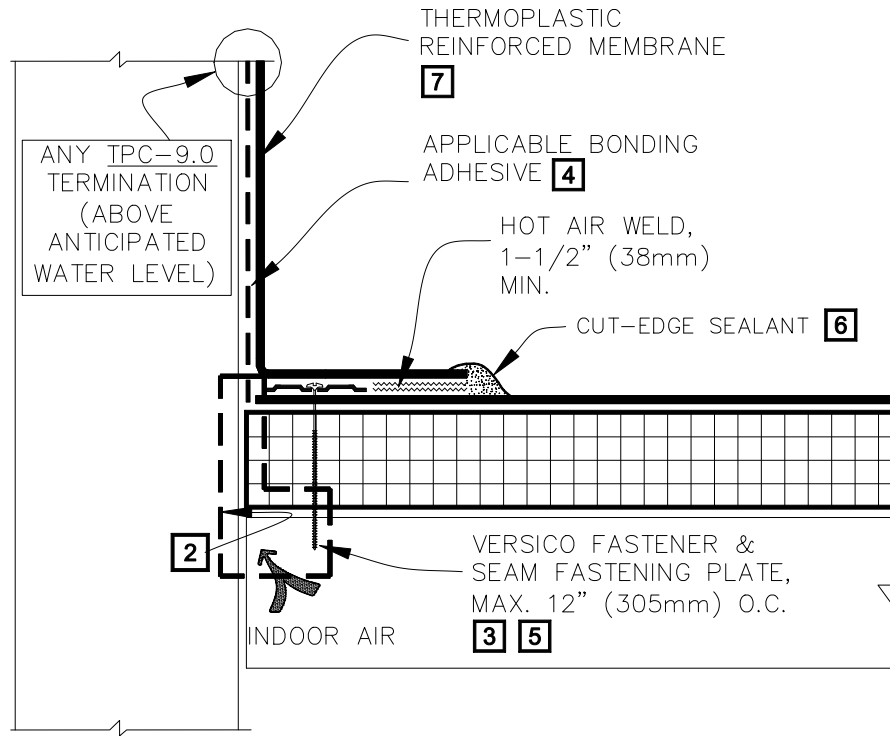


CAUTION WHEN A WARRANTY WIND SPEED GREATER THAN 90MPH IS SPECIFIED, VERSICO FASTENERS AND SEAM FASTENING PLATES SHALL NOT EXCEED 6" (152mm) ON CENTER FOR ADHERED MEMBRANE ASSEMBLIES.



NOTES:

1. POSITION FASTENING PLATES 1/2" (13mm) TO 1" (25mm) FROM EDGE OF DECK MEMBRANE.
2. REFER TO SPECIAL CONDITION SPEC. SUPPLEMENTS G-01-11 OR G-07-11:
 - 2.1. TO BLOCK INDOOR AIR INFILTRATION AND HUMIDITY AT THE JUNCTION (G-01-11).
 - 2.2. WHERE ROOF SYSTEM IS DESIGNED WITH A VAPOR RETARDER (G-07-11).
3. ON MECHANICALLY ATTACHED SYSTEMS, HPVX FASTENERS AND PLATES OR HPV-XL FASTENERS AND PLATES ARE REQUIRED OVER STEEL AND WOOD DECKS. ON CONCRETE DECKS, CD-10 OR MP 14-10 FASTENERS ARE USED WITH HPVX PLATES.
4. WHEN USING TPO MEMBRANE, BONDING ADHESIVE IS NOT REQUIRED WHEN THE FLASHING HEIGHT IS 12" (305mm) AND COUNTERFLASHING IS USED FOR TERMINATION. WHEN COPING OR VERSICO TERMINATION BAR IS USED, BONDING ADHESIVE MAY BE ELIMINATED WHEN THE FLASHING HEIGHT IS 18" (457mm) OR LESS.
5. IN A CASE WHERE FASTENERS MUST BE FASTENED INTO THE VERTICAL SURFACE, CARE MUST BE TAKEN TO CREASE THE MEMBRANE TIGHTLY INTO THE ANGLE CHANGE. PLACING THE PLATES TIGHT INTO THE ANGLE CHANGE WILL HELP HOLD THE MEMBRANE IN THE PROPER POSITION.
6. APPROXIMATELY 1/8" (3mm) DIAMETER BEAD OF CUT-EDGE SEALANT IS REQUIRED ON CUT EDGES OF REINFORCED TPO MEMBRANE AND RECOMMENDED ON CUT EDGES OF VERSIFLEX PVC MEMBRANE.
7. WHEN PARAPET WALL HEIGHT EXCEEDS 48" (1219mm), REFER TO DETAILS TPC-12.4 OR TPC-12.5 FOR ADDITIONAL REQUIREMENTS WHEN USING PVC MEMBRANE ONLY.



PARAPET FLASHING

	→ THERMOPLASTIC REINFORCED MEMBRANE
	→ APPROVED SUBSTRATE
	→ SEE NOTE(S)

THERMOPLASTIC ROOFING SYSTEM

TPC-12.1