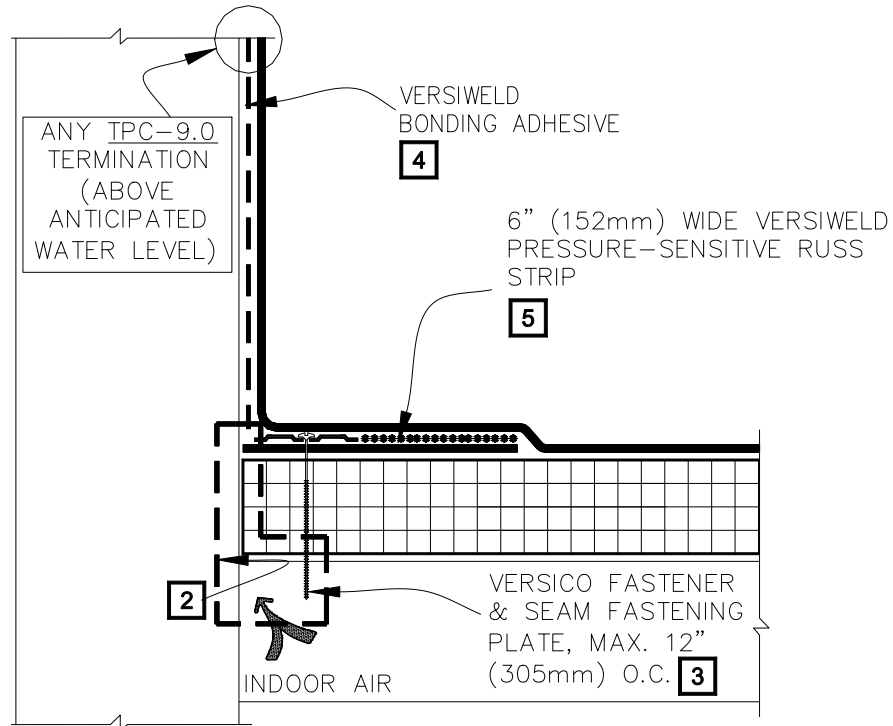


CAUTION WHEN A WARRANTY WIND SPEED GREATER THAN 90MPH IS SPECIFIED, VERSICO FASTENERS AND SEAM FASTENING PLATES SHALL NOT EXCEED 6" (152mm) ON CENTER FOR ADHERED MEMBRANE ASSEMBLIES.

TPO ONLY
(NOT FOR PVC)



NOTES:

1. FOR INSIDE CORNER AND RUSS APPLICATION SEE TPC-12.2B.
2. REFER TO SPECIAL CONDITION SPEC. SUPPLEMENTS G-01-11 OR G-07-11:
 - 2.1. TO BLOCK INDOOR AIR INFILTRATION AND HUMIDITY AT THE JUNCTION (G-01-11).
 - 2.2. WHERE ROOF SYSTEM IS DESIGNED WITH A VAPOR RETARDER (G-07-11).
3. ON MECHANICALLY ATTACHED SYSTEMS, HPVX FASTENERS AND PLATES OR HPV-XL FASTENERS AND PLATES ARE REQUIRED OVER STEEL AND WOOD DECKS. ON CONCRETE DECKS, CD-10 OR MP 14-10 FASTENERS ARE USED WITH HPVX PLATES.
4. WHEN COUNTERFLASHING IS USED FOR TERMINATION, BONDING ADHESIVE IS NOT REQUIRED WHEN FLASHING HEIGHT IS 12" (305 mm) OR LESS. WHEN COPING OR TERMINATION BAR IS USED, ADHESIVE MAY BE ELIMINATED WHEN FLASHING HEIGHT IS 18" (457mm) OR LESS.
5. TPO PRIMER MUST BE APPLIED TO BACK SIDE OF THE VERSIWELD MEMBRANE PRIOR TO COMPLETING SPLICE TO PRESSURE-SENSITIVE RUSS.
6. IN A CASE WHERE FASTENERS MUST BE FASTENED INTO THE VERTICAL SURFACE, CARE MUST BE TAKEN TO CREASE THE RUSS AS WELL AS THE MEMBRANE TIGHTLY INTO THE ANGLE CHANGE TO MAXIMIZE CONTACT BETWEEN THE TAPE AND MEMBRANE. MEMBRANE MUST BE ADHERED TO THE FULL WIDTH OF THE TAPE. PLACING THE PLATES TIGHT INTO THE ANGLE CHANGE WILL HELP HOLD THE RUSS IN THE PROPER POSITION.



PARAPET FLASHING WITH PRESSURE-SENSITIVE RUSS, PAGE 1 OF 2

THERMOPLASTIC ROOFING SYSTEM

TPC-12.2A