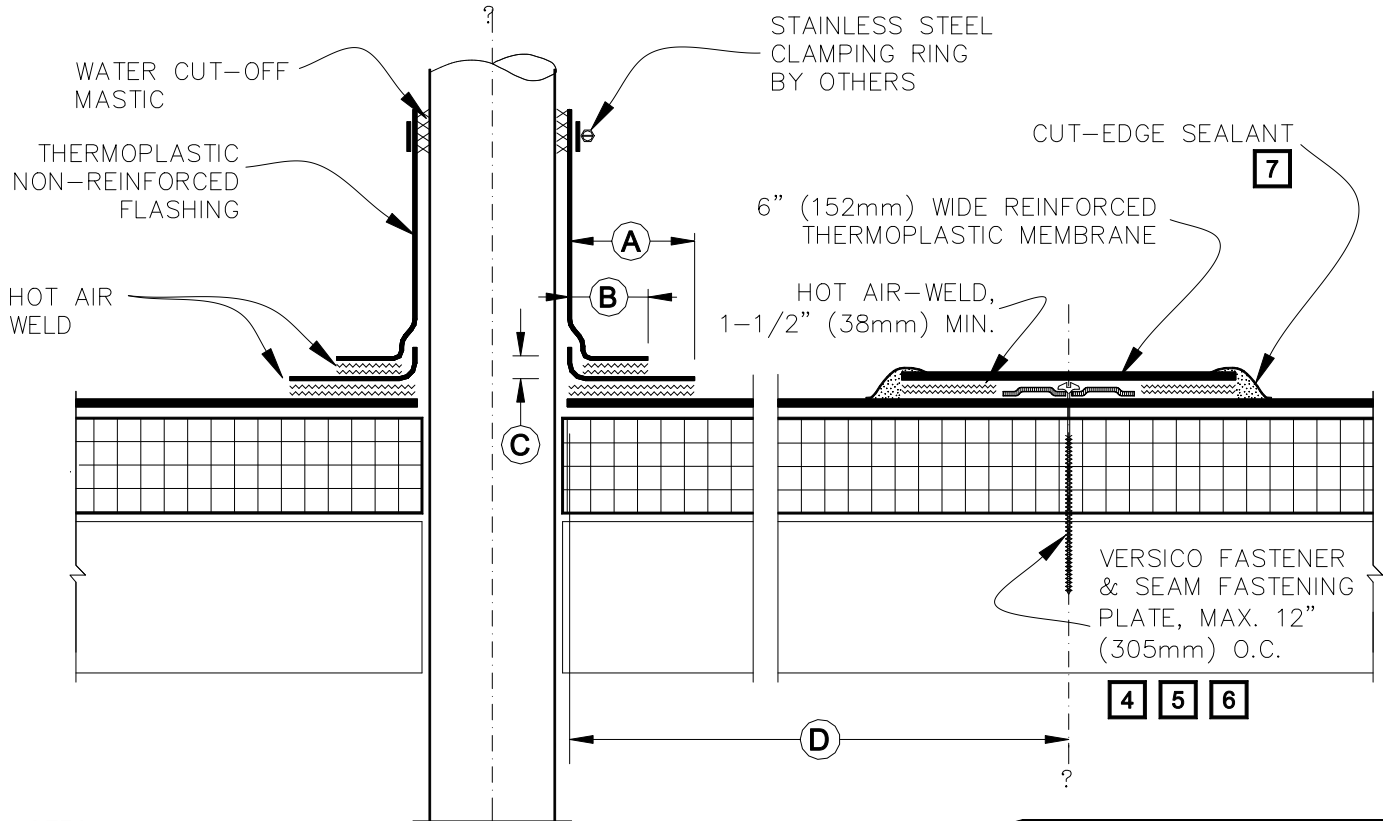


CAUTION DETAIL NOT FOR USE ON 25 OR 30-YEAR WARRANTY PROJECTS, PRE-FABRICATED/PRE-MOLDED ACCESSORIES MUST BE UTILIZED. ACCEPTABLE PIPE FLASHINGS SHALL CONFORM WITH THERMOPLASTIC COMMON DETAILS TPC-8.1, 8.3 OR 8.4.



NOTES:

- REMOVE ALL EXISTING LEAD AND FLASHING MATERIAL BEFORE INSTALLING FIELD FABRICATED PIPE FLASHING.
- TEMPERATURE OF THE PIPE PENETRATION MUST NOT EXCEED 140°F (60°C) WHEN USING PVC AND 160°F (71°C) WHEN USING TPO FLASHING.
- THERMOPLASTIC NON-REINFORCED FLASHING WRAPPED AROUND PIPE SHALL HAVE MINIMUM 1-1/2" (38mm) VERTICAL HOT AIR WELD.
- INSTALL A MINIMUM OF 4 SEAM FASTENING PLATES FOR PIPES WITH A DIAMETER UP TO 6" (152mm). ADDITIONAL SEAM FASTENING PLATES WILL BE REQUIRED FOR PIPES GREATER THAN 6" (152mm) IN DIAMETER AND SHALL BE SPACED 12" (305mm) ON CENTER MAXIMUM.
- FASTENERS/PLATES ARE NOT REQUIRED ON ADHERED SYSTEMS UNLESS PIPE DIAMETER EXCEEDS 18" (500mm).
- ON MECHANICALLY ATTACHED SYSTEMS, HPVX FASTENERS AND PLATES OR HPV-XL FASTENERS AND PLATES ARE REQUIRED OVER STEEL AND WOOD DECKS. ON CONCRETE DECKS, CD-10 OR MP 14-10 FASTENERS ARE USED WITH HPVX PLATES.
- APPROXIMATELY 1/8" (3mm) DIAMETER BEAD OF CUT-EDGE SEALANT IS REQUIRED ON CUT EDGES OF REINFORCED TPO MEMBRANE AND RECOMMENDED ON CUT EDGES OF VERSIFLEX PVC MEMBRANE.

DIMENSIONS	mm	
(A)	1-1/2"	38 TO
	2"	51
(B)	1"	25 MIN.
(C)	1/2"	13 MIN.
(D)	12"	305 APPROX.



FIELD FABRICATED PIPE FLASHING

→ THERMOPLASTIC REINFORCED MEMBRANE
 → APPROVED SUBSTRATE
 → SEE NOTE(S)

THERMOPLASTIC ROOFING SYSTEM

TPC-8.2