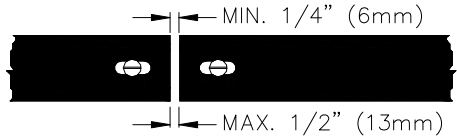
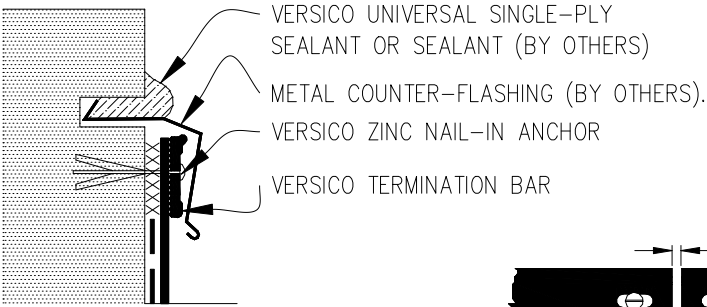
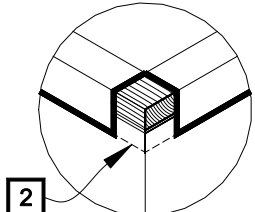
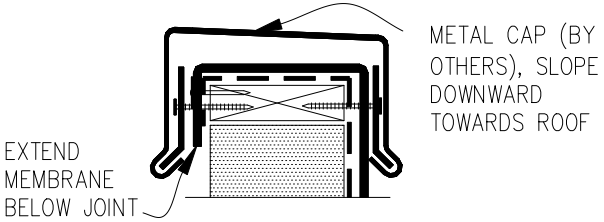


**9.1 MECHANICAL TERMINATION WITH COUNTER FLASHING**



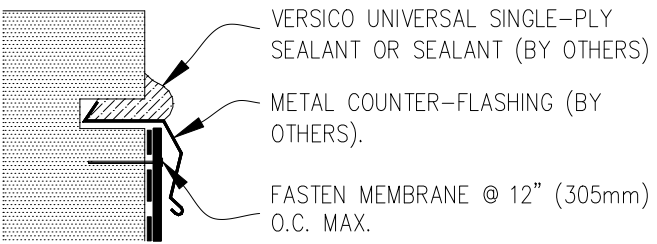
- NOTES:
1. APPLY ON HARD SMOOTH SURFACE ONLY; NOT FOR USE ON EXPOSED WOOD.
  2. DO NOT WRAP TERMINATION BAR AROUND CORNERS.

**9.2 SHEET METAL COPING (BY OTHERS)**



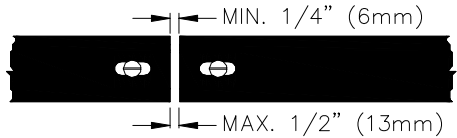
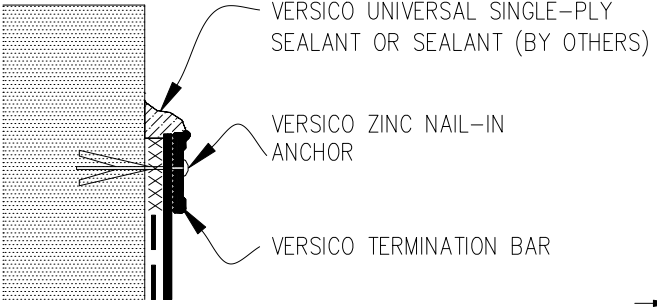
- NOTES:
1. FOR VERSICO VERSITRIM COPING, REFER TO INSTALLATION INSTRUCTIONS PUBLISHED SEPARATELY.
  2. MEMBRANE MUST BE EXTENDED TO CORNERS TO PROVIDE COMPLETE COVERAGE OF THE TOP WALL SURFACE.

**9.3 COUNTER FLASHING TERMINATION**



- NOTES:
1. WHEN MECHANICAL FASTENERS ARE USED TO PENETRATE THE METAL COUNTER-FLASHING, USE EPDM WASHERS, APPLY WATER CUT-OFF MASTIC UNDER THE COUNTER-FLASHING OR CAULK THE FASTENER HEADS.
  2. DETAIL NOT FOR USE ON WARRANTY PROJECTS EXCEEDING 10-YEARS.

**9.4 MECHANICAL TERMINATION**



- NOTES:
1. APPLY ON HARD SMOOTH SURFACE ONLY; NOT FOR USE ON EXPOSED WOOD.
  2. DO NOT WRAP COMPRESSION TERMINATION BAR AROUND CORNERS.
  3. DETAIL NOT FOR USE ON WARRANTY PROJECTS EXCEEDING 20-YEARS.

— — — VERSICO BONDING ADHESIVE

xxxxxxx WATER CUT-OFF MASTIC – MUST BE HELD UNDER CONSTANT COMPRESSION.



**MEMBRANE TERMINATIONS, PAGE 1 OF 2**

→ THERMOPLASTIC REINFORCED MEMBRANE  
 → APPROVED SUBSTRATE  
 → SEE NOTE(S)

THERMOPLASTIC ROOFING SYSTEM  
**TPC-9.0A**