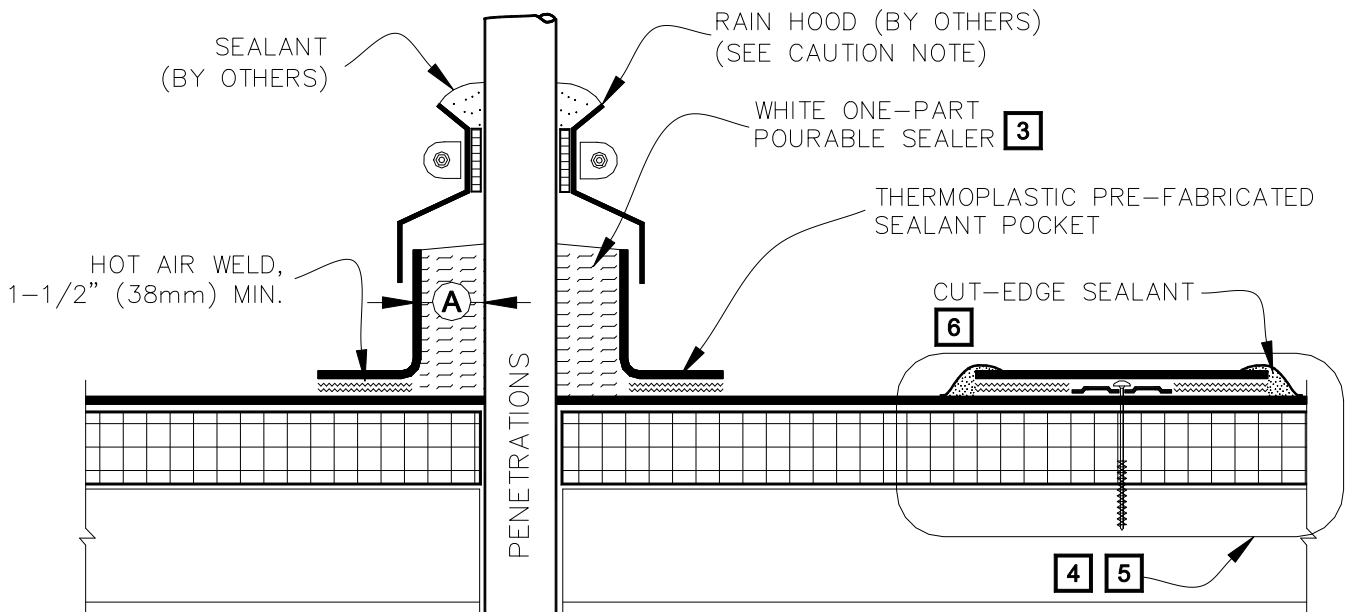


CAUTION

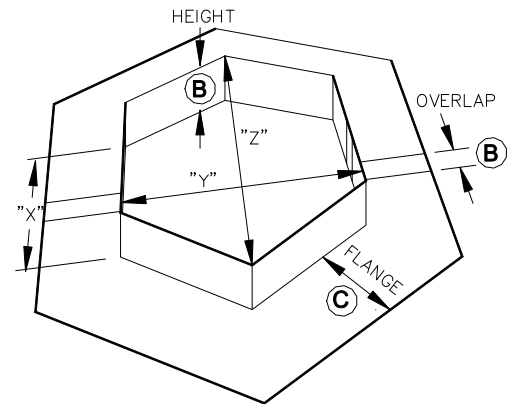
PRE-FABRICATED SEALANT POCKETS MUST BE USED IN CONJUNCTION WITH RAIN HOODS FOR PROJECTS WITH 25 AND 30-YEAR WARRANTIES.



NOTES:

- TEMPERATURE OF PIPE MUST NOT EXCEED 160° F (71° C).
- WHEN USING TPO SEALANT POCKET, APPLY TPO PRIMER TO THE TPO MEMBRANE AND PENETRATION(S) SURFACES ONLY. DO NOT APPLY TPO PRIMER TO THE GALVANIZED METAL SURFACE ON THE INSIDE OF THE SEALANT POCKET.
- FILL POCKET COMPLETELY WITH WHITE ONE-PART POURABLE SEALER UNTIL RIM IS COVERED WITH SEALANT; ENSURE ALL VOIDS ARE FILLED.
- ON MECHANICALLY-ATTACHED SYSTEMS, INSTALL A MINIMUM OF 4 FASTENING PLATES AROUND SEALANT POCKETS WITH A DIAMETER UP TO 6" (152mm). ADDITIONAL FASTENING PLATES WILL BE REQUIRED FOR SEALANT POCKETS GREATER THAN 6" IN DIAMETER AND SHALL BE SPACED 12" (305mm) ON CENTER MAXIMUM. FASTENERS/PLATES ARE NOT REQUIRED ON ADHERED SYSTEMS UNLESS SEALANT POCKET DIAMETER EXCEEDS 12" (305mm).
- REFER TO VERSICO SPECIFICATIONS FOR PROPER FASTENERS AND PLATES.
- APPROXIMATELY 1/8" (3mm) DIAMETER BEAD OF CUT-EDGE SEALANT IS REQUIRED ON CUT EDGES OF REINFORCED TPO MEMBRANE AND RECOMMENDED ON CUT EDGES OF VERSIFLEX PVC MEMBRANE.
- CUSTOM SIZES ARE AVAILABLE FOR BOTH TPO AND PVC SEALANT POCKETS.

DIMENSIONS	mm		
(A)	1"	25	MIN.
(B)	2"	51	MIN.
(C)	4"	102	MIN.



POCKET SIZE	DIMENSIONS		
	"X"	"Y"	"Z"
12"(305mm)	12"(305mm)	12"(305mm)	24"(607mm)

SEALANT POCKET EXTENSION LEGS CAN BE USED TO EXTEND THE LENGTH IN 10" (254mm) INCREMENTS. REFER TO PRODUCT DATA SHEET (PDS) FOR STEP-BY-STEP INSTALLATION PROCEDURES



PRE-FABRICATED SEALANT POCKET

→ THERMOPLASTIC REINFORCED MEMBRANE
 → APPROVED SUBSTRATE
 → SEE NOTE(S)

THERMOPLASTIC ROOFING SYSTEM

TPC-16.2