



# MODEL 451 ALUMINUM FULL VIEW OVERHEAD DOORS

PROJECT: \_\_\_\_\_

CONTRACTOR: \_\_\_\_\_

ARCHITECT: \_\_\_\_\_

DOOR DISTRIBUTOR: \_\_\_\_\_

DRAWING No.: \_\_\_\_\_  
 SHEET No.: \_\_\_\_\_ OF \_\_\_\_\_  
 DRAWN BY: \_\_\_\_\_ DATE: \_\_\_\_\_

FRAMING NOTE: WAYNE-DALTON CORP. DESIGN ENGINEERS EACH COMMERCIAL SECTIONAL OVERHEAD GARAGE DOOR FOR INDIVIDUAL APPLICATIONS BASED ON PRODUCT & OPTIONS REQUIRED. ONE, TWO OR FOUR SPRING TORSION ASSEMBLIES ARE TYPICALLY SUPPLIED AS STANDARD. DUAL TORSION SHAFT ASSEMBLIES ARE SUPPLIED WHEN REQUIRED. WHEN IT IS TIME TO PREPARE THE OPENINGS) FOR INSTALLATION OF A WAYNE-DALTON PRODUCT, CONTACT OUR CUSTOMER SERVICE REPRESENTATIVES FOR MOUNTING PAD LOCATIONS.

## STANDARD FEATURES

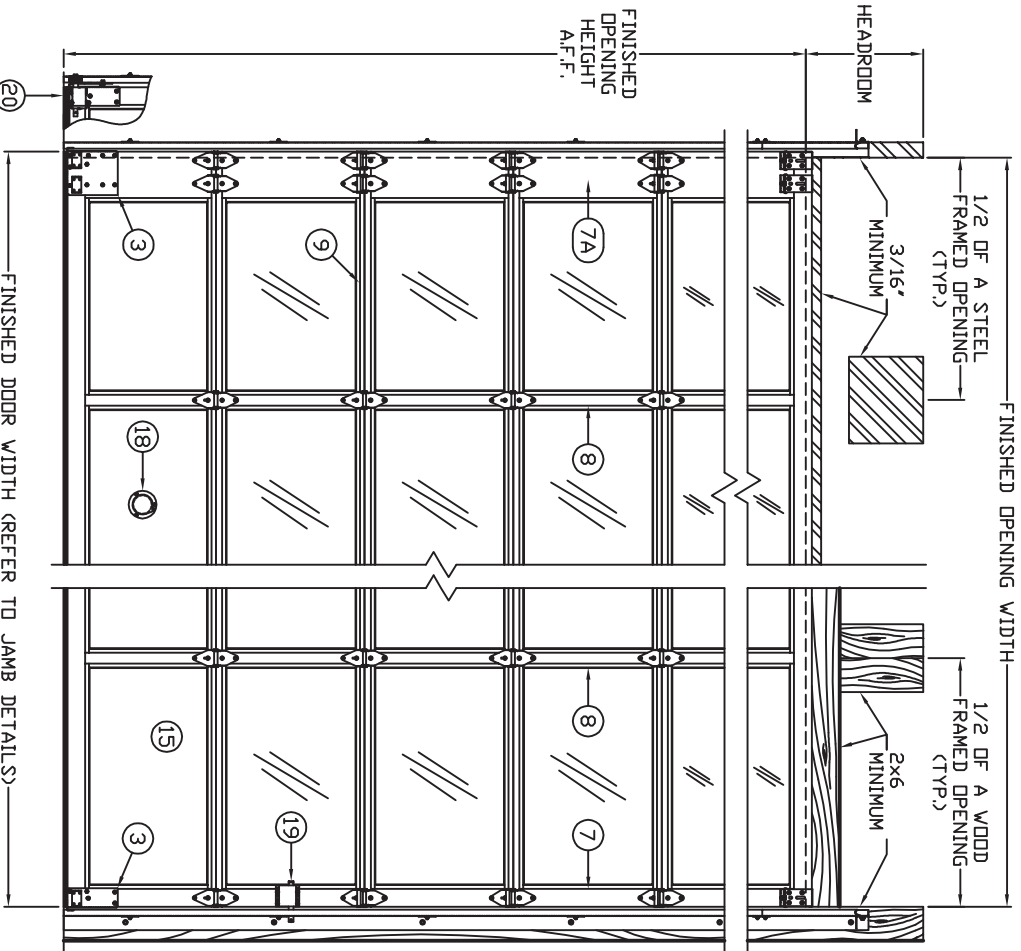
1. GRADUATED HOT-DIPPED GALVANIZED STEEL END HINGES (14 GAUGE MINIMUM).
2. ADJUSTABLE HOT-DIPPED GALVANIZED STEEL TOP BRACKETS.
3. HOT-DIPPED GALVANIZED STEEL BOTTOM BRACKETS WITH CABLE ATTACHMENT.
4. (4) 1/4"-20 TEK SCREWS PER HINGE.
5. (4) 1/4"-20 TEK SCREWS PER TOP BRACKET.
6. 1-3/8" SECTIONS OF EXTRUDED ALUMINUM ALLOY 6063T6 WITH CLEAR SATIN ANODIZED (TO MEET SPECIFICATION 204-R1) OR BAKED-ON ENAMEL FINISH. CLEAR SATIN ANODIZED  WHITE  BROWN END AND CENTER STILES ARE PRE-DRILLED FOR HINGE ATTACHMENT AND SECURED TO RAILS WITH SELF-TAPPING SCREWS.
7. 3-1/2" TOP RAIL, BOTTOM RAIL AND END STILES.
8. DOUBLE END STILES/HARDWARE OVER 16'-2" WIDE.
9. 3" CENTER STILES.
10. 2-7/8" COMBINED INTERMEDIATE RAILS
- 9A. 1-13/16" LOWER RAIL.
- 9B. 1-1/16" UPPER RAIL.
11. TONGUE & GROOVE JOINT WITH PVC JOINT SEAL.
12. EACH PANEL SEALED WITH BUTYL TAPE.
13. PANELS HELD WITH SNAP-IN ALUMINUM RETAINER.
- 1/8" CLEAR GLAZING MATERIALS:
  - DSB GLASS
  - TEMPERED GLASS
  - ACRYLIC (PLEXIGLASS)
  - POLYCARBONATE (LEXAN)

- No. SECTIONS GLAZED
- 1/4" CLEAR GLAZING MATERIALS:
  - ACRYLIC (PLEXIGLASS)
  - POLYCARBONATE (LEXAN)

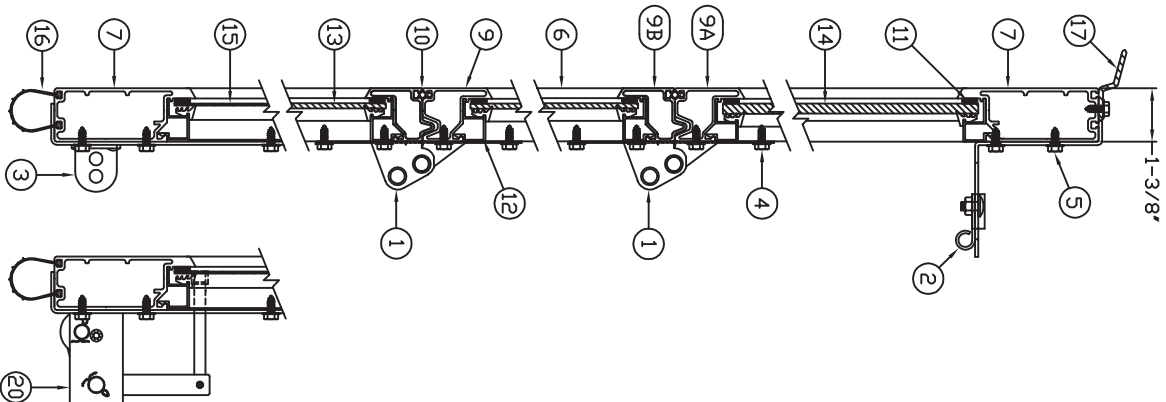
- No. SECTIONS GLAZED
15. SOLID BOTTOM SECTION PANELS OF .050" ALUMINUM SHEETS TO MATCH SPECIFIED DOOR COLOR (GLAZED BOTTOM SECTION NOT RECOMMENDED).
16. PVC 'BULB-SHAPE' BOTTOM ASTRAGAL.

## FREQUENTLY SELECTED OPTIONS

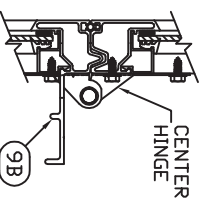
- 17.  PVC TOP SECTION HEAD SEAL.
- 18.  3" EXHAUST PORT (BOTTOM SECTION).
- 19.  INSIDE SIDE LOCK (STANDARD)
- DMIT LOCKING.
- 20.  CABLE FAILURE DEVICE.



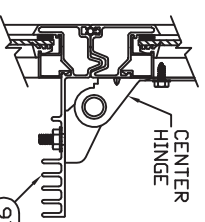
INTERIOR ELEVATION



CONSTRUCTION



UPPER INTERMEDIATE RAILS OVER 10'-2" WIDE TO 16'-2" WIDE



UPPER INTERMEDIATE RAILS OVER 16'-2" WIDE