



MODEL 452 ALUMINUM FULL VIEW OVERHEAD DOORS

PROJECT: _____

CONTRACTOR: _____

ARCHITECT: _____

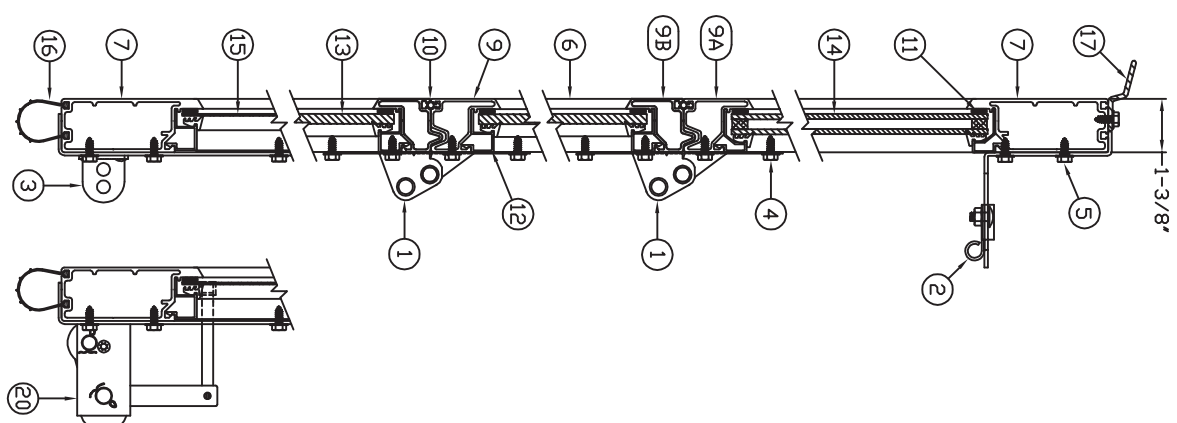
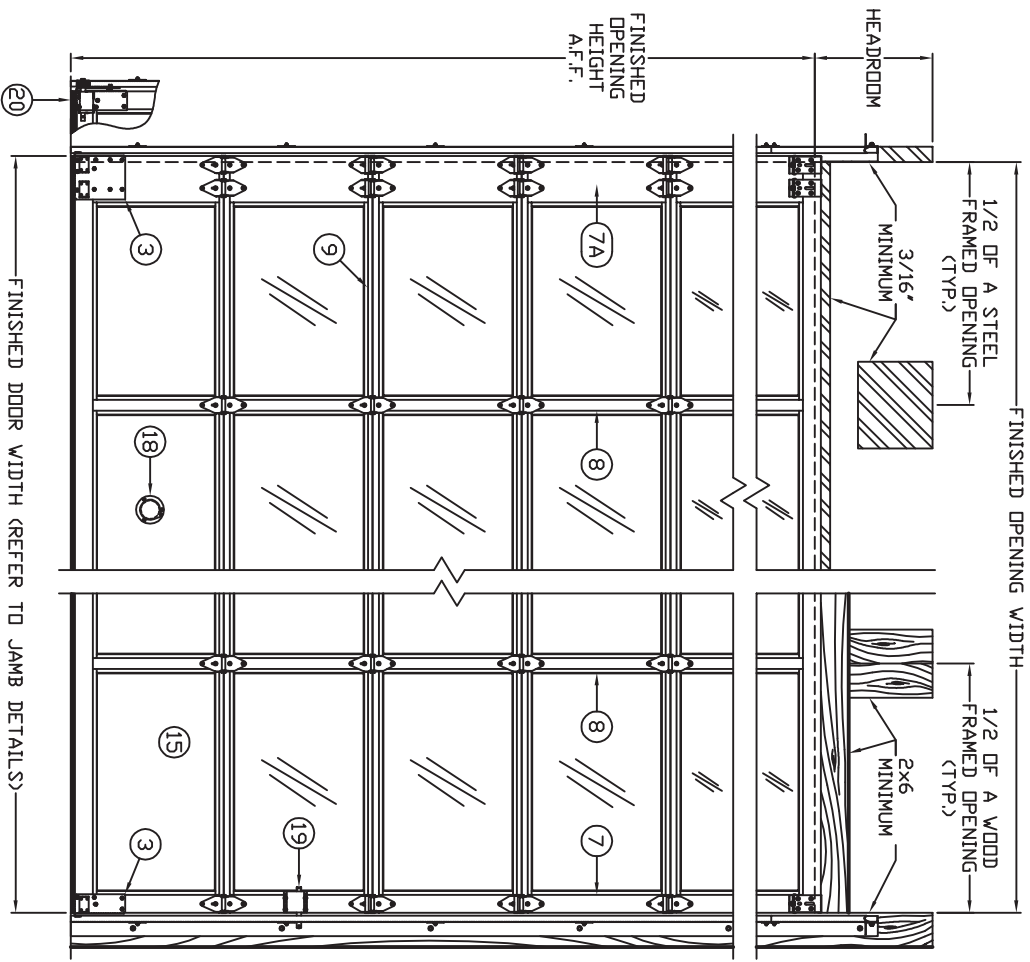
DOOR DISTRIBUTOR: _____

DRAWING No.: _____
 SHEET No.: _____ OF _____
 DRAWN BY: _____ DATE: _____

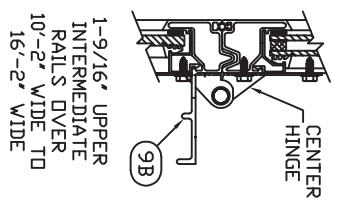
FRAMING NOTE: WAYNE-DALTON CORP. DESIGN ENGINEERS EACH COMMERCIAL SECTIONAL OVERHEAD GARAGE DOOR FOR INDIVIDUAL APPLICATIONS BASED ON PRODUCT & OPTIONS REQUIRED. ONE, TWO OR FOUR SPRING TORSION ASSEMBLIES ARE TYPICALLY SUPPLIED AS STANDARD. DUAL TORSION SHAFT ASSEMBLIES ARE SUPPLIED WHEN REQUIRED. WHEN IT IS TIME TO PREPARE THE OPENINGS FOR INSTALLATION OF A WAYNE-DALTON PRODUCT, CONTACT OUR CUSTOMER SERVICE REPRESENTATIVES FOR MOUNTING PAD LOCATIONS.

STANDARD FEATURES

1. GRADUATED HOT-DIPPED GALVANIZED STEEL END HINGES (14 GAUGE MINIMUM).
 2. ADJUSTABLE HOT-DIPPED GALVANIZED STEEL TOP BRACKETS.
 3. HOT-DIPPED GALVANIZED STEEL BOTTOM BRACKETS WITH CABLE ATTACHMENT.
 4. (4) 1/4-20 TEK SCREWS PER HINGE.
 5. (4) 1/4-20 TEK SCREWS PER TOP BRACKET.
 6. 1-3/8" SECTIONS OF EXTRUDED ALUMINUM ALLOY 6063T6 WITH CLEAR SATIN ANODIZED T/D MEET SPECIFICATION 204-R1) OR BAKED-ON ENAMEL FINISH. CLEAR SATIN ANODIZED WHITE BROWN END AND CENTER STILES ARE PRE-DRILLED FOR HINGE ATTACHMENT AND SECURED TO RAILS WITH SELF-TAPPING SCREWS.
 7. 3-1/2" TOP RAIL, BOTTOM RAIL AND END STILES.
 - 7A. DOUBLE END STILES/HARDWARE OVER 12'-2" WIDE).
 8. 3" CENTER STILES.
 9. 2-7/8" COMBINED INTERMEDIATE RAILS
 - 9A. 1-13/16" LOWER RAIL.
 - 9B. 1-1/16" UPPER RAIL.
 10. TONGUE & GROOVE JOINT WITH PVC JOINT SEAL.
 11. EACH PANEL SEALED WITH BUTYL TAPE.
 12. PANELS HELD WITH SNAP-IN ALUMINUM RETAINER.
 13. 1/4" CLEAR GLAZING MATERIALS:
 - PLATE GLASS
 - TEMPERED PLATE GLASS
 - POLISHED WIRE GLASS
 14. No. SECTIONS GLAZED
 - 1/2" CLEAR GLAZING MATERIALS (1/4" AIR SPACE)
 - DOUBLE INSULATED SSB GLASS
 - DOUBLE INSULATED TEMPERED GLASS
 15. No. SECTIONS GLAZED
 - SOLID BOTTOM SECTION PANELS OF .050" ALUMINUM SHEETS TO MATCH SPECIFIED DOOR COLOR (GLAZED BOTTOM SECTION NOT RECOMMENDED).
 - 16. PVC "BULB-SHAPED" BOTTOM ASTRAGAL.
- FREQUENTLY SELECTED OPTIONS
17. PVC TOP SECTION HEAD SEAL.
 18. 3" EXHAUST PORT (BOTTOM SECTION).
 19. OMIT LOCKING.
 20. CABLE FAILURE DEVICE.



CONSTRUCTION



1-9/16" UPPER INTERMEDIATE RAILS OVER 10'-2" WIDE TO 16'-2" WIDE