

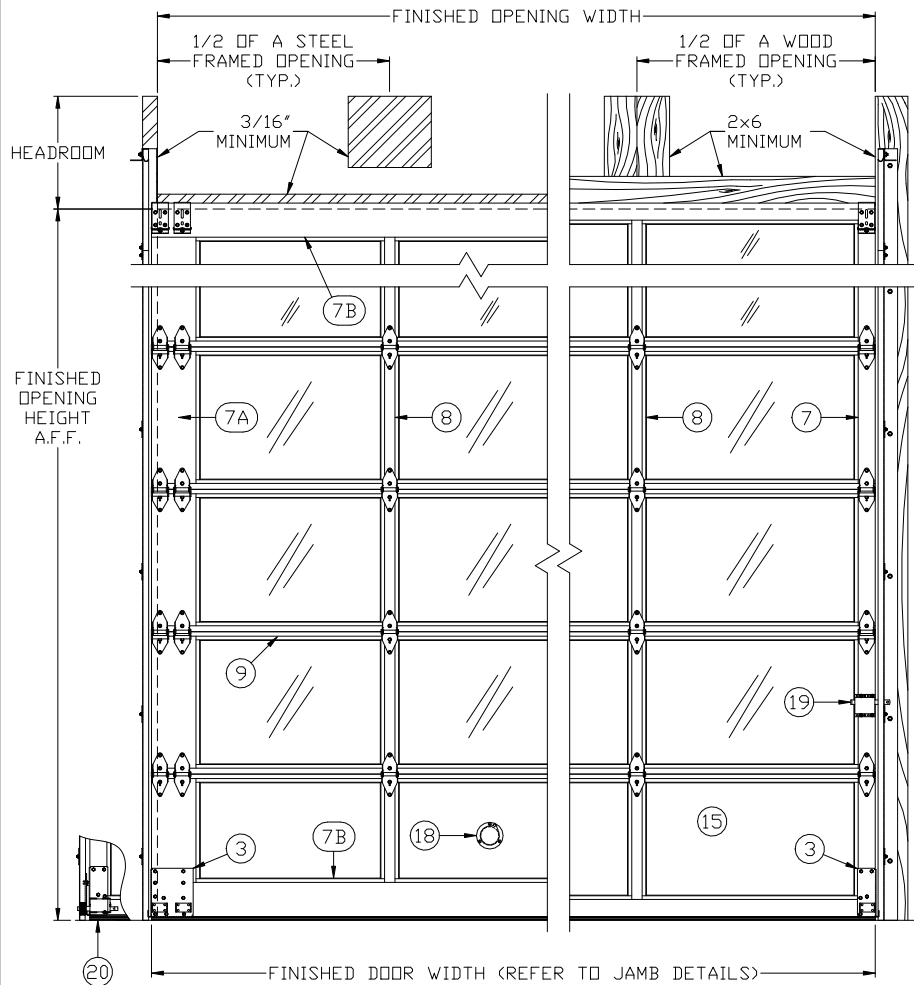
MODEL KAL ALUMINUM FULL VIEW OVERHEAD DOORS

DRAWING No.: _____
SHEET No.: _____ OF _____
DRAWN BY: _____ DATE: _____

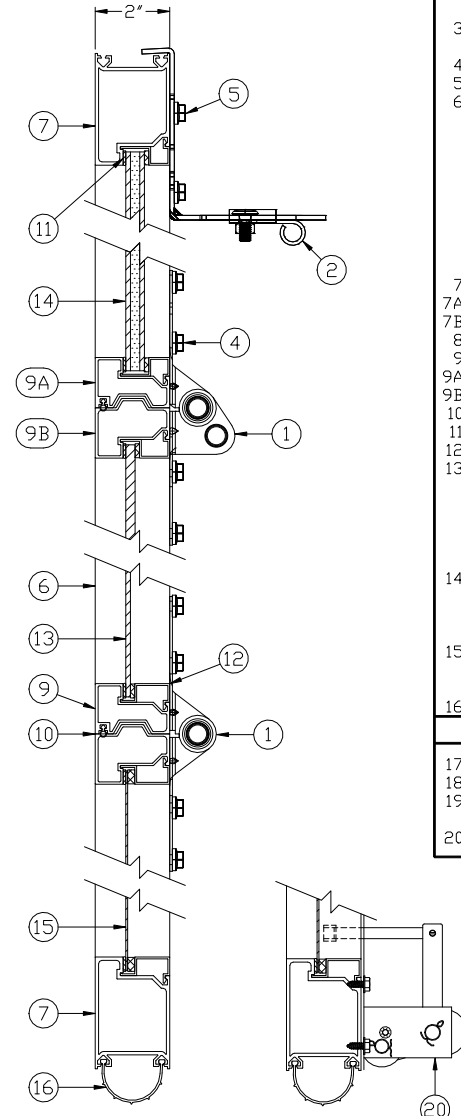
PROJECT: _____ CONTRACTOR: _____ ARCHITECT: _____ DOOR DISTRIBUTOR: _____

FRAMING NOTE: WAYNE-DALTON CORP. DESIGN ENGINEERS EACH COMMERCIAL SECTIONAL OVERHEAD GARAGE DOOR FOR INDIVIDUAL APPLICATIONS BASED ON PRODUCT & OPTIONS REQUIRED. ONE, TWO OR FOUR SPRING TORSION ASSEMBLIES ARE TYPICALLY SUPPLIED AS STANDARD. DUAL TORSION SHAFT ASSEMBLIES ARE SUPPLIED WHEN REQUIRED. WHEN IT IS TIME TO PREPARE THE OPENING(S) FOR INSTALLATION OF A WAYNE-DALTON PRODUCT, CONTACT OUR CUSTOMER SERVICE REPRESENTATIVES FOR MOUNTING PAD LOCATIONS.

STANDARD FEATURES



INTERIOR ELEVATION



CONSTRUCTION

1. GRADUATED HOT-DIPPED GALVANIZED STEEL END HINGES (14 GAUGE MINIMUM).
2. ADJUSTABLE HOT-DIPPED GALVANIZED STEEL TOP BRACKETS.
3. HOT-DIPPED GALVANIZED STEEL BOTTOM BRACKETS WITH CABLE ATTACHMENT.
4. (4) 1/4"-20 TEK SCREWS PER HINGE.
5. (4) 1/4"-20 TEK SCREWS PER TOP BRACKET.
6. 2" SECTIONS OF EXTRUDED ALUMINUM ALLOY 6063T6 WITH CLEAR SATIN ANODIZED (TO MEET SPECIFICATION 204-R1)
 CLEAR SATIN ANODIZED
 POWDER COAT COLOR OPTIONS:
 DRK BRNZE WHT BLK GRN RAL CARD
 ANODIZED COLOR OPTIONS:
 BLACK LT BRNZE MED BRNZE DRK BRNZE
 END AND CENTER STILES ARE SECURED TO RAILS WITH SELF-TAPPING SCREWS.
7. 3" TOP RAIL, BOTTOM RAIL AND END STILES.
- 7A. (DOUBLE END STILES/HARDWARE - OPTION).
- 7B. 6" TOP AND BOTTOM RAIL OVER 16'-2" WIDE
8. 3" CENTER STILES.
9. 2-3/4" COMBINED INTERMEDIATE RAILS
- 9A. 1-3/8" LOWER RAIL.
- 9B. 1-3/8" UPPER RAIL.
10. TONGUE & GROOVE JOINT WITH PVC JOINT SEAL.
11. EACH PANEL SEALED WITH BUTYL TAPE.
12. PANELS HELD WITH SNAP-IN ALUMINUM RETAINER.
13. KALLG (LIGHT GLAZING) CLEAR GLAZING MATERIALS:
 CLR ANNEALED (1/8")
 CLR TEMPERED (1/8")
 ACRYLIC (PLEXIGLASS) (1/8" OR 1/4")
 POLYCARBONATE (LEXAN) (1/8" OR 1/4")
 No. SECTIONS GLAZED
14. KALHG (HEAVY GLAZING) CLEAR GLAZING MATERIALS:
 CLR LAMINATE (7/32") CLR TEMPER (1/4")
 CLR ANNEALED (1/2") CLR TEMP INS (1/2")
 No. SECTIONS GLAZED
15. SOLID BOTTOM SECTION PANELS OF .050" ALUMINUM SHEETS TO MATCH SPECIFIED DOOR COLOR (GLAZED BOTTOM SECTION NOT RECOMMENDED).
16. VINYL "U" TYPE BOTTOM ASTRAGAL.

FREQUENTLY SELECTED OPTIONS

17. PVC TOP SECTION HEAD SEAL.
18. 3" EXHAUST PORT (BOTTOM SECTION).
19. INSIDE SIDE LOCK (STANDARD)
 KEYED LOCK ASSEMBLY.
20. CABLE FAILURE DEVICE (HL OR VL TRACK ONLY).

