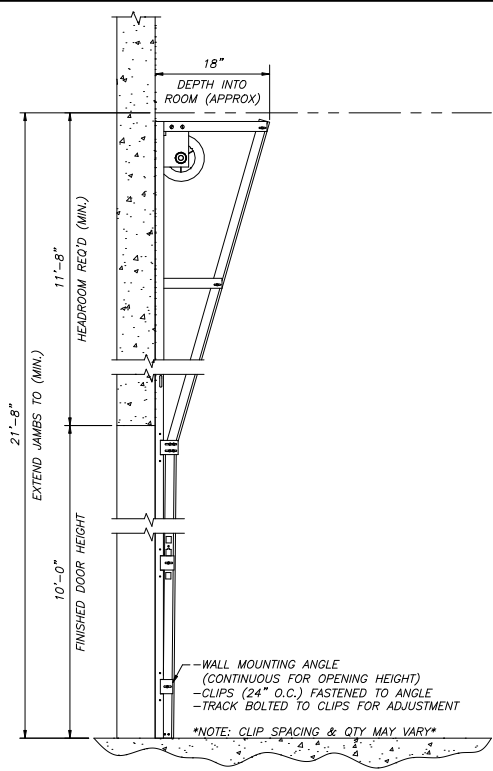
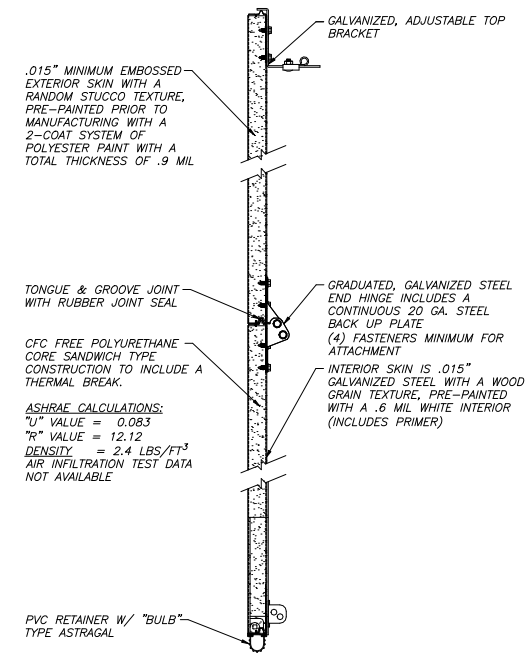


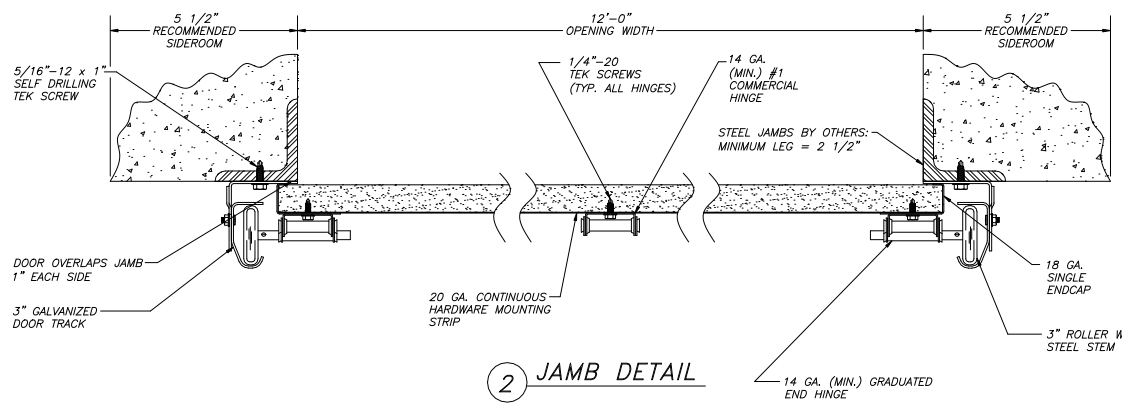
1 INTERIOR ELEVATION



3 VERTICAL - BREAKAWAY



4 SECTION CONSTRUCTION



2 JAMB DETAIL

STANDARD COMMERCIAL PRODUCT SUBMITTED BASED ON DESIGN CRITERIA PROVIDED. MINIMUM WIND LOAD AS REQUIRED BY THE AUTHORITY HAVING JURISDICTION OVER THE GEOGRAPHICAL LOCATION OF DOOR(S) INSTALLATION MAY REQUIRE ADDITIONAL DESIGN CONSIDERATION AND/OR CLEARANCES

THERMOMARK 5155 DOOR SPECIFICATIONS

SECTIONS: CORE MATERIAL IS 2.2 LBS./FT³ DENSITY CFC-11 FREE POLYURETHANE FOAM. SKIN MATERIAL/OUTSIDE IS .015" HOT-DIPPED GALVANIZED STRUCTURAL QUALITY STEEL, EMBOSSED WITH NON-REPEAT RANDOM STUCCO TEXTURE. PRE-PAINTED PRIOR TO MANUFACTURING WITH A TWO-COAT SYSTEM OF POLYESTER PAINT WITH A FINISHED COAT (INCLUDES PRIMER). INSIDE AND OUTSIDE SKINS ARE ROLL-FORMED AND SEPARATED WITH A THERMAL BREAK. HINGE LOCATIONS HAVE 20 GAUGE CONTINUOUS BACK UP PLATES. BOTTOM ASTRAGAL IS A TWO-PIECE "BULB" TYPE ASTRAGAL TO BE ATTACHED TO THE INSIDE SKIN. SECTION ENDS HAVE END CAPS OF 18 GAUGE HOT-DIPPED GALVANIZED STEEL. BETWEEN SECTION JOINT SEAL IS STANDARD.
ASHRAE CALCULATIONS: U" VALUE = 0.083 R" VALUE = 12.12

TRACK	ROLLERS	SPRINGS:	TORSION SHAFT:	HINGES/BRACKETS:
MAT'L: GALVANIZED	SIZE: 3"	TYPE: TORSION	MAT'L: SOLID CRS	MAT'L: GALVANIZED
SIZE: 3"	TIRE: STEEL	MAT'L: OIL-TEMPERED	SIZE: 1"	GAUGE: 14 (MINIMUM)
TYPE: ANGLE	BEARING: CASE HARDENED	SIZE: 2 5/8"	DRUMS	CABLE:
JAMBS: STEEL	QTY: 2	LOCATION: FRONT	MAT'L: ALUMINUM	MAT'L: GALVANIZED
DOOR			TYPE: 850-11	TYPE: AIRCRAFT
EXTERIOR: WHITE				

SPECIAL NOTES:



DOOR NUMBER (DOOR MARKS)	QTY.	NET OPENING SIZE	FINISHED DOOR SIZE	TYPE OF LIFT	TYPE OF OPERATION	SECT'S. GLAZED	LIFTS PER SECT.	PANELS WIDE	SECTIONS HIGH
A	1	12'-0" X 10'-0"	12'-2" X 10'-1"	VL	MANUAL	0	0	3	5 0 0

PROJECT:	---	DRAWN BY:	DAW
ARCHITECT:	---	DATE:	10/3/2016
CONTRACTOR:	---	SHEET:	1 OF 1
DISTRIBUTOR:	---		

QUOTE/SALES ORDER No.	SAMPLE 5155
FILE No.	SAMPLE 5155

ARCHITECTURAL STAMP

ARCHITECTURAL NOTES

CONTRACTOR STAMP

REVISIONS