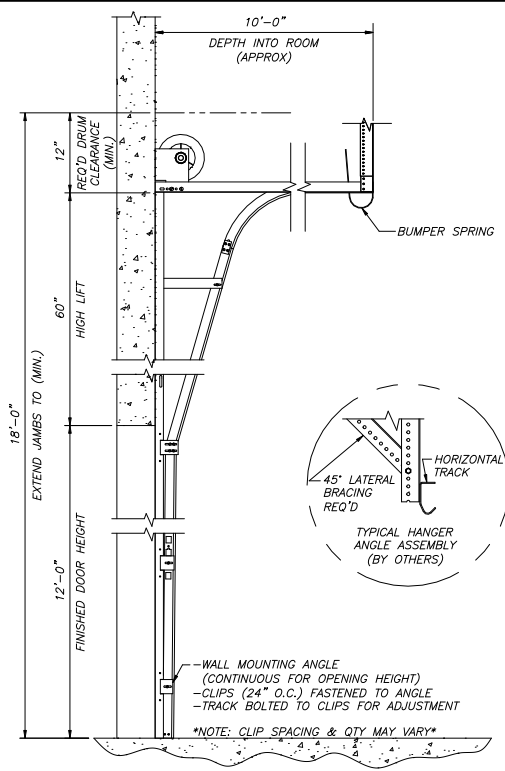
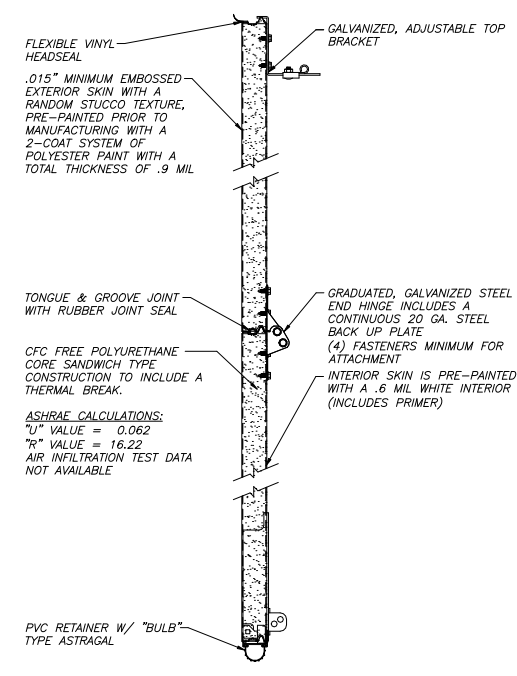


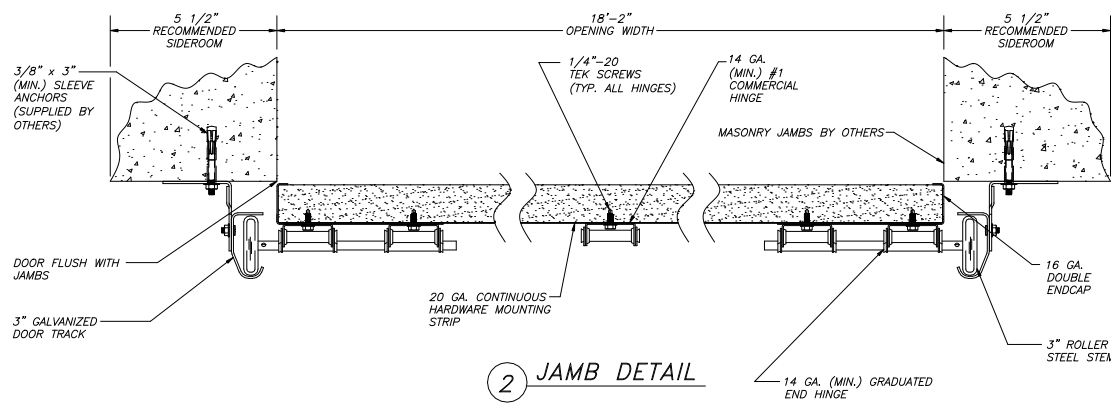
1 INTERIOR ELEVATION



3 HIGH LIFT - BREAKAWAY



4 SECTION CONSTRUCTION



2 JAMB DETAIL

**INSTALLATION NOTE:**  
ALL ANCHORS MUST BE POSITIONED 1" (MIN.) FROM MORTAR JOINTS

STANDARD COMMERCIAL PRODUCT SUBMITTED BASED ON DESIGN CRITERIA PROVIDED. MINIMUM WIND LOAD AS REQUIRED BY THE AUTHORITY HAVING JURISDICTION OVER THE GEOGRAPHICAL LOCATION OF DOOR(S) INSTALLATION MAY REQUIRE ADDITIONAL DESIGN CONSIDERATION AND/OR CLEARANCES

**THERMOMARK 5255 DOOR SPECIFICATIONS**

**SECTIONS:** CORE MATERIAL IS 2.2 LBS./FT<sup>3</sup> DENSITY CFC-11 FREE POLYURETHANE FOAM. SKIN MATERIAL/OUTSIDE IS .015" HOT-DIPPED GALVANIZED STRUCTURAL QUALITY STEEL, EMBOSSED WITH NON-REPEAT RANDOM STUCCO TEXTURE. PRE-PAINTED PRIOR TO MANUFACTURING WITH A TWO-COAT SYSTEM OF POLYESTER PAINT WITH A FINISHED COAT (INCLUDES PRIMER). INSIDE AND OUTSIDE SKINS ARE ROLL-FORMED AND SEPARATED WITH A THERMAL BREAK. HINGE LOCATIONS HAVE 20 GAUGE CONTINUOUS BACK UP PLATES. BOTTOM ASTRAGAL IS A TWO-PIECE "BULB" TYPE ASTRAGAL TO BE ATTACHED TO THE INSIDE SKIN. SECTION ENDS HAVE END CAPS OF 18 GAUGE HOT-DIPPED GALVANIZED STEEL. BETWEEN SECTION JOINT SEAL IS STANDARD.  
ASHRAE CALCULATIONS: "U" VALUE = 0.062 "R" VALUE = 16.22

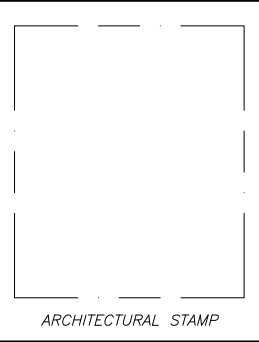
|  |   |  |   |   |
|--|---|--|---|---|
| <b>TRACK</b><br>MAT'L: GALVANIZED<br>SIZE: 3"<br>TYPE: ANGLE<br>JAMBS: MASONRY | <b>ROLLERS</b><br>SIZE: 3"<br>TIRE: STEEL<br>BEARING: CASE HARDENED | <b>SPRINGS:</b><br>TORSION<br>MAT'L: OIL-TEMPERED<br>SIZE: DUPLEX<br>QTY: 2<br>LOCATION: FRONT | <b>TORSION SHAFT:</b><br>MAT'L: SOLID CRS<br>SIZE: 1" | <b>HINGES/BRACKETS:</b><br>MAT'L: GALVANIZED<br>GAUGE: 14 (MINIMUM) |
| <b>DOOR</b><br>EXTERIOR: WHITE   |   |  | <b>DRUMS</b><br>MAT'L: ALUMINUM<br>TYPE: 500-84       | <b>CABLE:</b><br>MAT'L: GALVANIZED<br>TYPE: AIRCRAFT                |

**SPECIAL NOTES:**

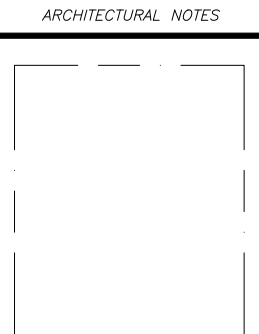


| DOOR NUMBER (DOOR MARKS) | QTY. | NET OPENING SIZE | FINISHED DOOR SIZE | TYPE OF LIFT | TYPE OF OPERATION | SECT'S. GLAZED | LIFTS PER SECT. | PANELS WIDE | SECTIONS HIGH |
|--------------------------|------|------------------|--------------------|--------------|-------------------|----------------|-----------------|-------------|---------------|
| A                        | 1    | 18'-2" X 12'-0"  | 18'-2" X 12'-1"    | HIGH         | MANUAL            | 0              | 0               | 5           | 24" 20.8" 18" |

|                |                 |                                   |
|----------------|-----------------|-----------------------------------|
| PROJECT: —     | DRAWN BY: DAW   | QUOTE/SALES ORDER No. SAMPLE 5255 |
| ARCHITECT: —   | DATE: 10/3/2016 | FILE No. SAMPLE 5255              |
| CONTRACTOR: —  | SHEET: 1 OF 1   |                                   |
| DISTRIBUTOR: — |                 |                                   |



ARCHITECTURAL NOTES



REVISIONS