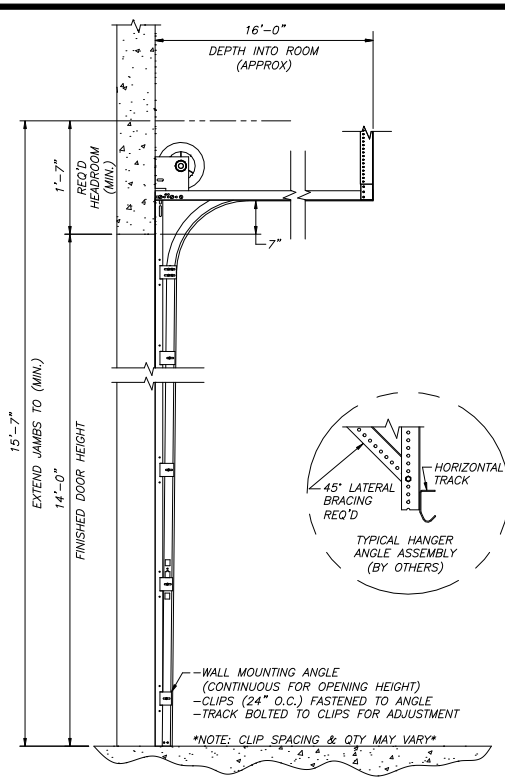
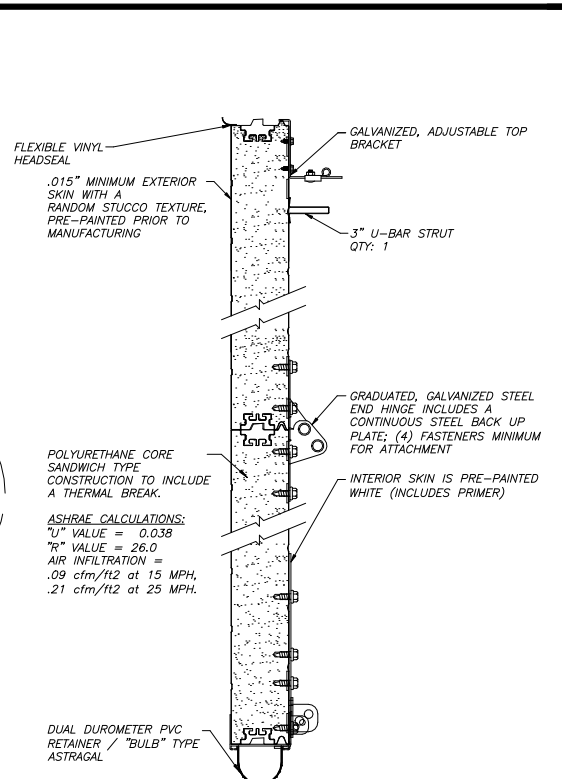


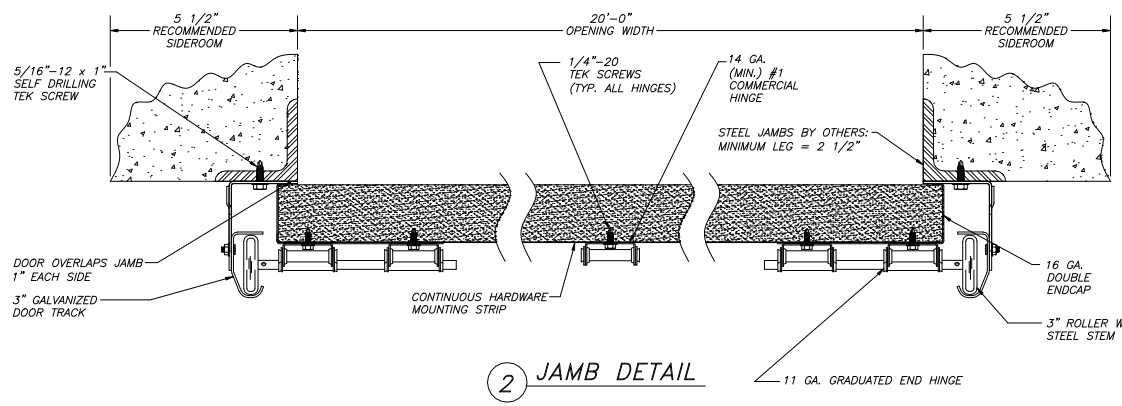
1 INTERIOR ELEVATION



3 STANDARD LIFT



4 SECTION CONSTRUCTION



2 JAMB DETAIL

STANDARD COMMERCIAL PRODUCT SUBMITTED BASED ON DESIGN CRITERIA PROVIDED. MINIMUM WIND LOAD AS REQUIRED BY THE AUTHORITY HAVING JURISDICTION OVER THE GEOGRAPHICAL LOCATION OF DOOR(S) INSTALLATION MAY REQUIRE ADDITIONAL DESIGN CONSIDERATION AND/OR CLEARANCES

THERMOMARK 530 DOOR SPECIFICATIONS

SECTIONS: CORE MATERIAL IS 2.2 LBS./FT³ DENSITY POLYURETHANE FOAM. SKIN MATERIAL/OUTSIDE IS .015" HOT-DIPPED GALVANIZED STEEL, EMBOSSED WITH NON-REPEAT RANDOM STUCCO TEXTURE. PRE-PAINTED PRIOR TO MANUFACTURING WITH A TWO-COAT SYSTEM OF POLYESTER PAINT WITH A FINISHED COAT (INCLUDES PRIMER). INSIDE AND OUTSIDE SKINS ARE ROLL-FORMED AND SEPARATED WITH A THERMAL BREAK. HINGE LOCATIONS HAVE CONTINUOUS BACK UP PLATES. BOTTOM ASTRAGAL IS A TWO-PIECE "BULB" TYPE ASTRAGAL TO BE ATTACHED TO THE INSIDE SKIN. SECTION ENDS HAVE END CAPS OF MINIMUM 18 GAUGE HOT-DIPPED GALVANIZED STEEL. BETWEEN SECTION JOINT SEAL IS STANDARD. ASHRAE CALCULATIONS: "U" VALUE = 0.038 "R" VALUE = 26

TRACK: MAT'L: GALVANIZED
SIZE: 3"
TYPE: ANGLE
JAMBS: STEEL

ROLLERS: SIZE: 3"
TIRE: STEEL
BEARING: CASE HARDENED

SPRINGS: TORSION
TYPE: OIL-TEMPERED
SIZE: 3 3/4"
QTY: 4
LOCATION: FRONT

TORSION SHAFT: MAT'L: SOLID CRS
SIZE: 1"

HINGES/BRACKETS: MAT'L: GALVANIZED
GAUGE: 14 (MINIMUM)

CABLE: MAT'L: GALVANIZED
TYPE: AIRCRAFT

DRUMS: MAT'L: ALUMINUM
TYPE: 5250-18

SPECIAL NOTES:

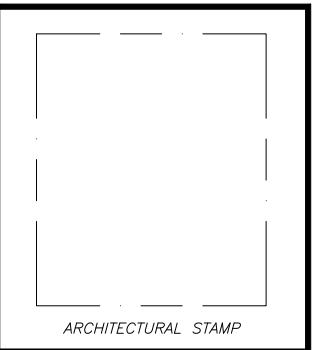


DOOR NUMBER (DOOR MARKS)	QTY.	NET OPENING SIZE	FINISHED DOOR SIZE	TYPE OF LIFT	TYPE OF OPERATION	SECT'S. GLAZED	LITES PER SECT.	PANELS WIDE	SECTIONS HIGH
A	1	20'-0" X 14'-0"	20'-2" X 14'-1"	15"RAD.	MANUAL	1	6	6	7 0 0

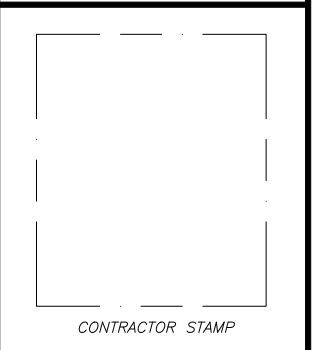
PROJECT: —
ARCHITECT: —
CONTRACTOR: —
DISTRIBUTOR: —

DRAWN BY: DAW
DATE: 10/3/2016
SHEET: 1 OF 1

QUOTE/SALES ORDER No. SAMPLE 530
FILE No. SAMPLE 530



ARCHITECTURAL NOTES



REVISIONS