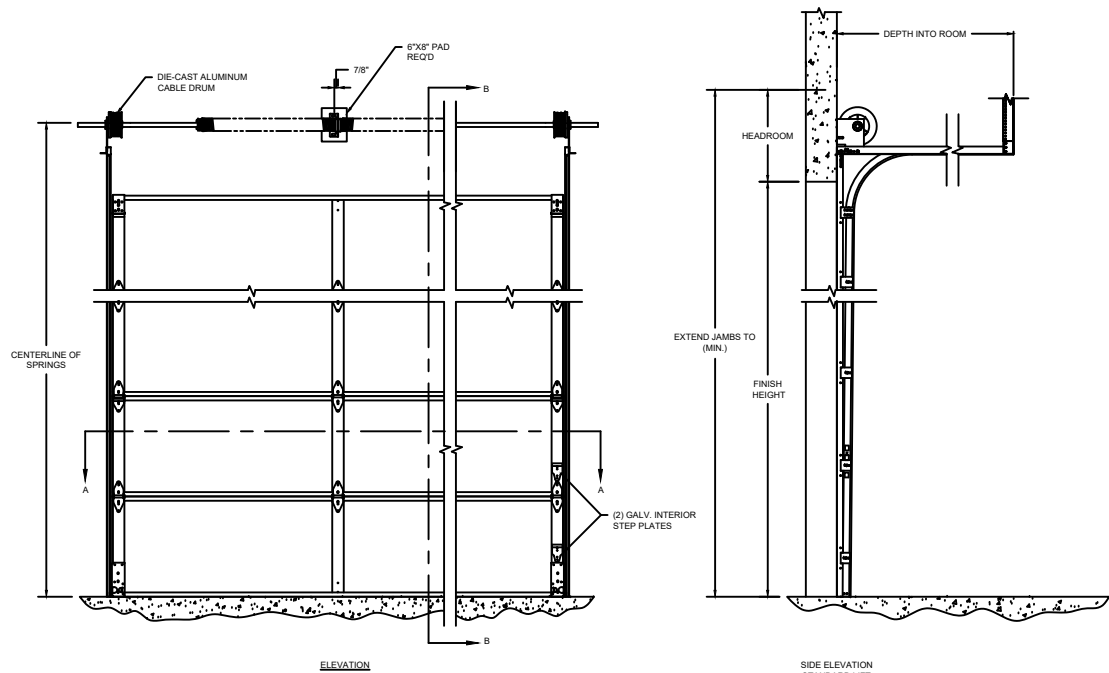
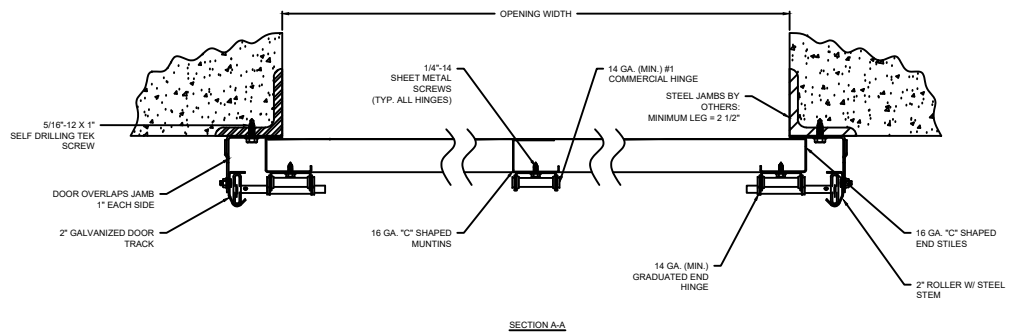


| MODEL | STANDARD MAX. VALUES | |
|-----------|----------------------|--------|
| | WIDTH | HEIGHT |
| 220 & C20 | 30' 2" | 22' 1" |



| OPTIONS | |
|-----------------|---|
| OPENING WIDTH | |
| OPENING HEIGHT | |
| DOOR TRACK SIZE | <input type="checkbox"/> 2" <input type="checkbox"/> 3" |
| END STILES | <input type="checkbox"/> SINGLE <input type="checkbox"/> DOUBLE |
| WINDOW OPTIONS | <input type="checkbox"/> NO WINDOW <input type="checkbox"/> FULL-VIEW LITES <input type="checkbox"/> 24" X 7" VISION LITE |
| SEAL OPTIONS | <input type="checkbox"/> JAMB SEAL <input type="checkbox"/> STANDARD BOTTOM SEAL <input type="checkbox"/> TOP SEAL <input type="checkbox"/> ELECTRIC SAFETY EDGE <input type="checkbox"/> PNEUMATIC SAFETY EDGE |
| LOCK OPTIONS | <input type="checkbox"/> SLIDE LOCK <input type="checkbox"/> UNILOCK |



SECTIONAL STEEL

| COMPONENT | MATERIAL | OPERATION | NOTES: |
|-------------------|-------------------------------|----------------|---|
| SECTIONS | 20 GA. ROLL-FORMED GALVANIZED | MANUAL PUSH UP | - WARRANTY: 1-YEAR LIMITED - INSULATION WILL BE COMPOSED OF POLYSTYRENE PROVIDING INSULATION FACTORS OF R-VALUE* 7.64 (WITH OPTIONAL INSULATION) U-VALUE* 0.13 (WITH OPTIONAL INSULATION). WAYNE DALTON™ USES A CALCULATED DOOR SECTION R-VALUE FOR OUR INSULATED DOORS. |
| CENTER/END STILES | 16 GA. STEEL | | |
| HARDWARE | GALVANIZED STEEL | | |
| WEATHERSTRIP | FLEXIBLE PVC | | |

220 & C20 SECTIONAL STEEL DOORS (INSULATED)

| | | |
|----------|-------|--|
| DWG. NO. | DATE: | |
| SHEET | BY: | |