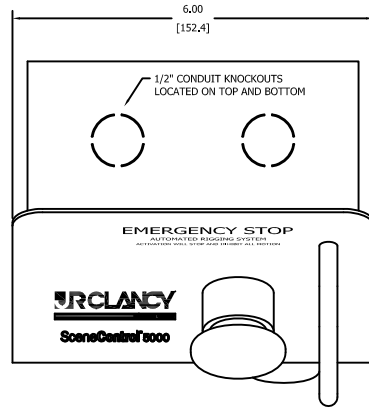
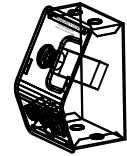


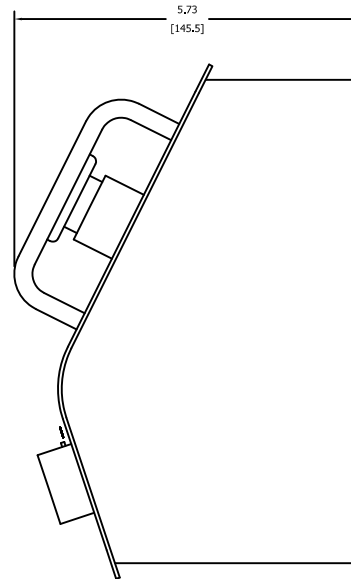
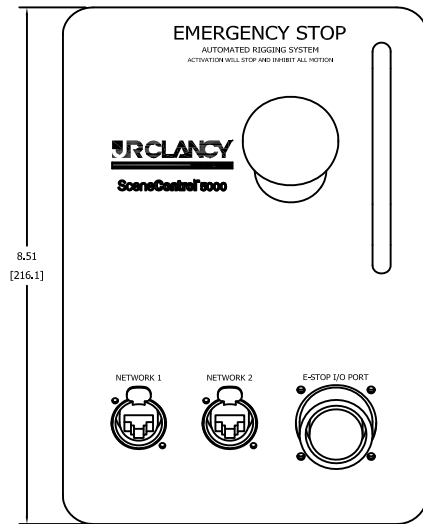
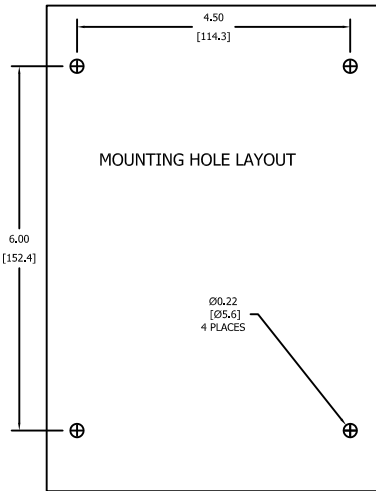
STANDARD TOLERANCES UNLESS NOTED OTHERWISE		DIMENSIONS		DIMENSIONS	
NUMBER	DATE	DOWN	INITIAL DESIGN	REVISIONS	
0	—	—	INITIAL DESIGN		



NOTE: INSTALL ALL CONSOLE PORTS WITH E-STOP SWITCH HEIGHT, 44" FROM FINISHED FLOOR, ALL CONSOLE PORT AND REMOTE E-STOP LOCATIONS ARE TO BE CONFIRMED WITH THE END USERS' SITE CONSULTANT AND J.R. CLANCY CONTROLS DEPARTMENT BEFORE MOUNTING.



44.00



PROJECT CITY, ST		064-SC-PORT-ES-REM SC5000 CONTROL PORT W/ REM ESTOP ELEV & MOUNTING DETAILS	
ARCHITECT -	DATE -	FILE NAME -	SCALE NOTED
CONTRACTOR -	DATE -	064-SC-PORT-ES-REM	XXXXX
J.R. CLANCY 215(401)-2440 7041 Interstate Industrial Rd., Syracuse, NY 13209		SCALE NOTED	E2.50
THIS DRAWING IS THE PROPERTY OF J.R. CLANCY INC. ANY USE AND/OR REPRODUCTION OF THIS DRAWING OR THE CONTENTS HEREIN, WITHOUT WRITTEN CONSENT OF J.R. CLANCY INC. IS PROHIBITED. J.R. CLANCY INC. IS NOT RESPONSIBLE FOR THE UNAUTHORIZED USE AND/OR ALTERATION OF THIS DRAWING OR THE CONTENTS HEREIN. THE DRAWING IS SUBJECT TO CHANGE AND APPROVAL BY THE PROJECT'S ARCHITECT AND/OR ENGINEER, AND IS SUBJECT TO J.R. CLANCY'S MANUFACTURING AND/OR INSTALLATION OF THE ITEMS REPRESENTED HEREIN. COPYRIGHT 2014 J.R. CLANCY INC.		DATE -	DRAWN BY -