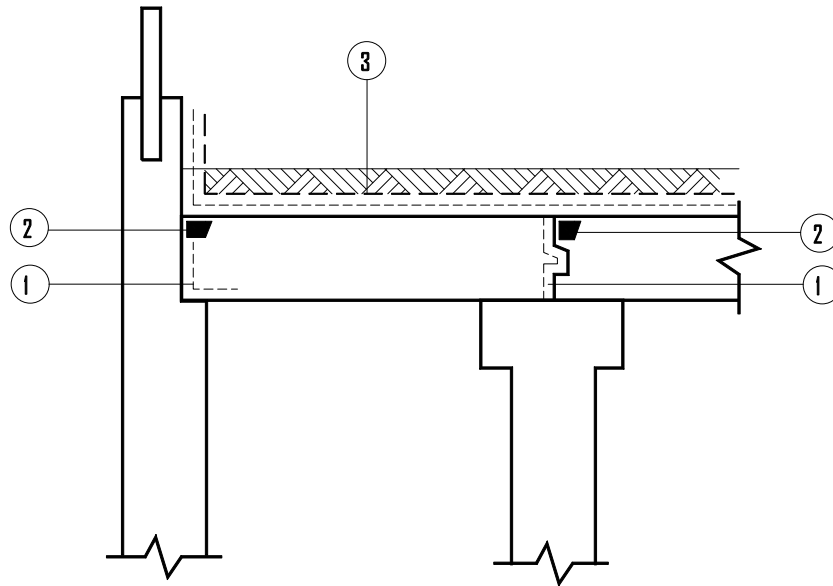


**XYPEX PROJECT SPECIFICATIONS & SCHEMATIC DRAWINGS**

**ROOF/PLAZA DECK**



----- CONCENTRATE SLURRY COAT

■ CONCENTRATE DRY-PAC

- . - . - . MODIFIED SLURRY COAT

- ① BETWEEN POURS, APPLY XYPEX CONCENTRATE SLURRY TO ALL JOINT SURFACES AT THE RATE OF 2.0 LB./SQ. YD. (1.0 KG/M<sup>2</sup>)
- ② IN SEALING STRIP, APPLY ONE COAT OF XYPEX CONCENTRATE AT THE RATE OF 1.5 LB./SQ. YD. (0.8 KG/M<sup>2</sup>), THEN FILL SLOT TO SURFACE WITH XYPEX CONCENTRATE IN DRY-PAC FORM.
- ③ TO SLAB AND ADJACENT CURB WALL APPLY ONE COAT OF XYPEX CONCENTRATE AT THE RATE OF 1.25 TO 1.5 LB./SQ. YD. (0.65 TO 0.8 KG/M<sup>2</sup>). AFTER THE CONCENTRATE HAS SET, BUT WHILE IT IS STILL "GREEN", APPLY A COAT OF XYPEX MODIFIED AT THE RATE OF 1.25 TO 1.5 LB./SQ. YD. (0.65 TO 0.8 KG/M<sup>2</sup>)

**NOTE: USE APPROPRIATE MATERIAL FOR PROTECTION AGAINST SUDDEN THERMAL CHANGES.**

**SCHEMATIC DIAGRAM SHOWS XYPEX APPLICATION ONLY AND DOES NOT DEPICT THE STANDARD REQUIREMENTS FOR WATERSTOPS OR EXPANSION JOINT SEALANTS.**

**THE SPECIFIER CAN CONSIDER THE ALTERNATIVE USE OF XYPEX DRY SHAKE OR XYPEX ADMIX, WHERE APPLICABLE.**

**REFER TO STANDARD SPECIFICATIONS FOR FURTHER INFORMATION.**