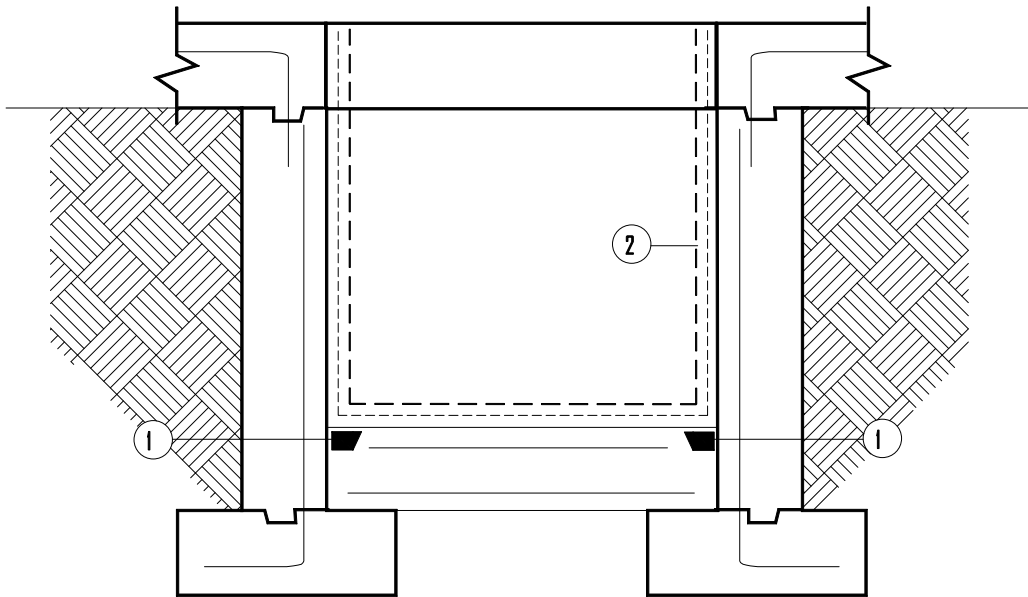


**XYPEX PROJECT SPECIFICATIONS & SCHEMATIC DRAWINGS**

**ELEVATOR PIT/SUMP PIT**



----- CONCENTRATE SLURRY COAT

■ CONCENTRATE DRY-PAC

--- MODIFIED SLURRY COAT

- ① IN SEALING STRIP, APPLY ONE COAT OF XYPEX CONCENTRATE AT THE RATE OF 1.5 LB./SQ. YD. (0.8 KG/M<sup>2</sup>), THEN FILL SLOT TO SURFACE WITH XYPEX CONCENTRATE IN DRY-PAC FORM.
- ② APPLY ONE SLURRY COAT OF XYPEX CONCENTRATE TO WALLS AND FLOOR SLAB AT A RATE OF 1.25 TO 1.5 LB./SQ. YD. (0.65 TO 0.8 KG/M<sup>2</sup>). AFTER THE CONCENTRATE HAS SET BUT WHILE IT IS STILL "GREEN", APPLY A COAT OF XYPEX MODIFIED AT THE RATE OF 1.25 TO 1.5 LB./SQ. YD. (0.65 TO 0.8 KG/M<sup>2</sup>)

**NOTE: FOR HYDRAULIC ELEVATORS, PLEASE CONTACT YOUR XYPEX REPRESENTATIVE FOR DETAIL DRAWINGS.**

**SCHEMATIC DIAGRAM SHOWS XYPEX APPLICATION ONLY AND DOES NOT DEPICT THE STANDARD REQUIREMENTS FOR WATERSTOPS OR EXPANSION JOINT SEALANTS.**

**THE SPECIFIER CAN CONSIDER THE ALTERNATIVE USE OF XYPEX DRY SHAKE OR XYPEX ADMIX, WHERE APPLICABLE.**

**REFER TO STANDARD SPECIFICATIONS FOR FURTHER INFORMATION.**