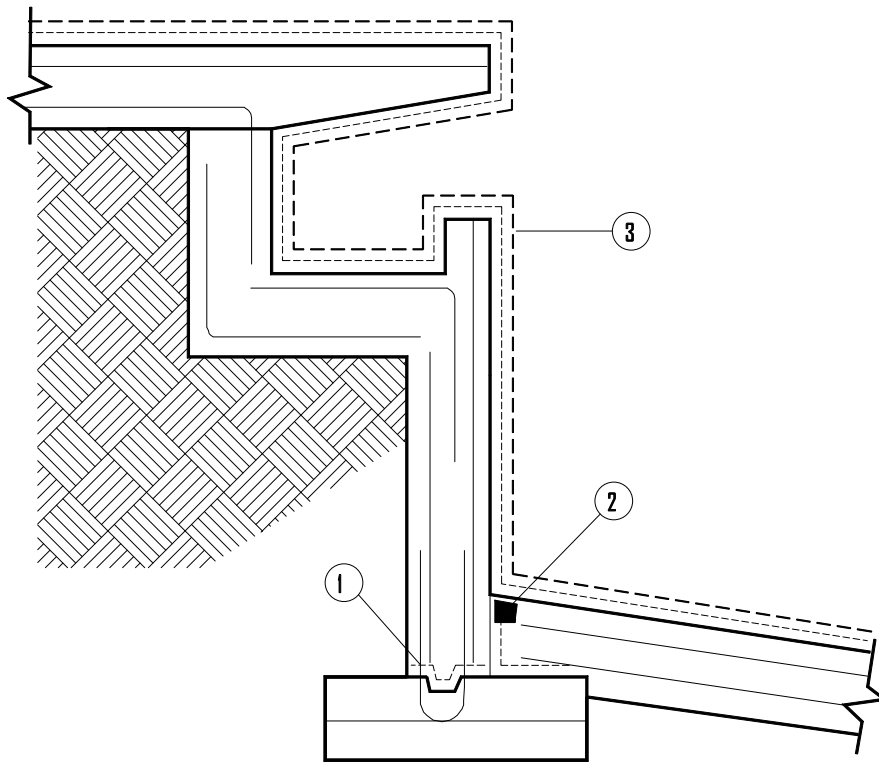


XYPEX PROJECT SPECIFICATIONS & SCHEMATIC DRAWINGS

SWIMMING POOL



----- CONCENTRATE SLURRY COAT

■ CONCENTRATE DRY-PAC

- · - · - · MODIFIED SLURRY COAT

- ① BETWEEN POURS, APPLY XYPEX CONCENTRATE SLURRY TO ALL JOINT SURFACES AT THE RATE OF 2.0 LB./SQ. YD. (1.0 KG/M²)
- ② IN SEALING STRIP, APPLY ONE SLURRY COAT OF XYPEX CONCENTRATE AT THE RATE OF 1.5 LB./SQ. YD. (0.8 KG/M²), THEN FILL SLOT TO SURFACE WITH XYPEX CONCENTRATE IN DRY-PAC FORM.
- ③ TO POOL DECK AND ALL INTERIOR WALL AND FLOOR SURFACES, APPLY ONE SLURRY COAT OF XYPEX CONCENTRATE AT A RATE OF 1.25 TO 1.5 LB./SQ. YD. (0.65 TO 0.8 KG/M²) AFTER THE CONCENTRATE HAS SET BUT WHILE IT IS STILL "GREEN", APPLY A COAT OF XYPEX MODIFIED AT A RATE OF 1.25 TO 1.5 LB./SQ. YD. (0.65 TO 0.8 KG/M²)
NEW CONSTRUCTION, XYPEX CONCENTRATE DS-1 IS RECOMMENDED FOR POOL DECK AND FLOOR SURFACES. PLEASE REFER TO PRODUCT DATA SHEETS.

SCHEMATIC DIAGRAM SHOWS XYPEX APPLICATION ONLY AND DOES NOT DEPICT THE STANDARD REQUIREMENTS FOR WATERSTOPS OR EXPANSION JOINT SEALANTS.

THE SPECIFIER CAN CONSIDER THE ALTERNATIVE USE OF XYPEX DRY SHAKE OR XYPEX ADMIX, WHERE APPLICABLE.

REFER TO STANDARD SPECIFICATIONS FOR FURTHER INFORMATION.