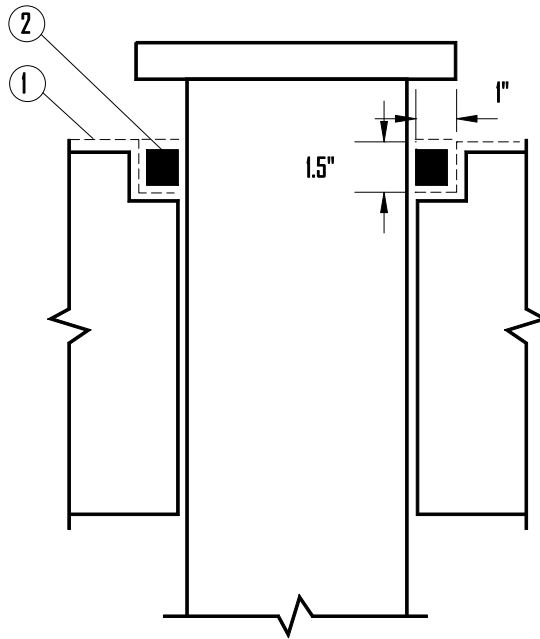


**XYPEX PROJECT SPECIFICATIONS & SCHEMATIC DRAWINGS**

**STANDARD METAL PIPE DETAIL**



----- CONCENTRATE SLURRY COAT

■ CONCENTRATE DRY-PAC

- ① APPLY XYPEX CONCENTRATE SLURRY TO THE GROOVE AT THE RATE OF 1.5 LB./SQ. YD. (0.8 KG/M<sup>2</sup>)
- ② FILL GROOVE TO SURFACE WITH XYPEX CONCENTRATE IN DRY-PAC FORM AND PACK TIGHTLY. BRUSH DRY-PAC LIBERALLY WITH WATER AND APPLY A XYPEX CONCENTRATE SLURRY OVER THE DRY-PAC AT THE RATE OF 1.5 LB./SQ. YD. (0.8 KG/M<sup>2</sup>)

SCHEMATIC DIAGRAM SHOWS XYPEX APPLICATION ONLY AND DOES NOT DEPICT THE STANDARD REQUIREMENTS FOR WATERSTOPS OR EXPANSION JOINT SEALANTS.

THE SPECIFIER CAN CONSIDER THE ALTERNATIVE USE OF XYPEX DRY SHAKE OR XYPEX ADMIX, WHERE APPLICABLE.

REFER TO STANDARD SPECIFICATIONS FOR FURTHER INFORMATION.