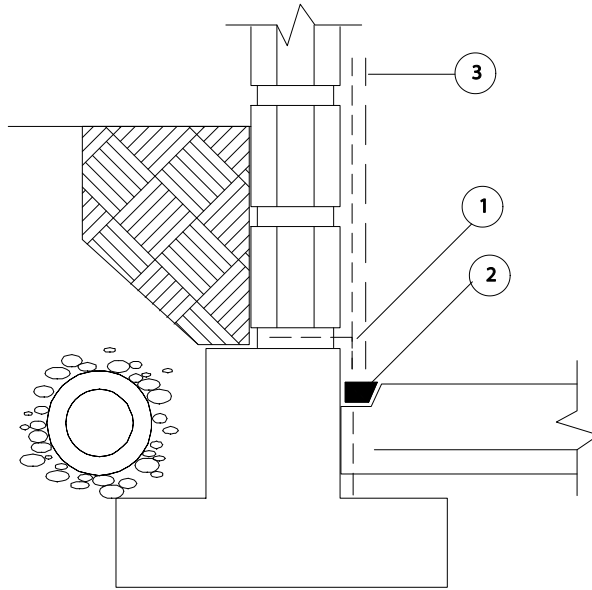


**XYPEX PROJECT SPECIFICATIONS & SCHEMATIC DRAWINGS**

**CONCRETE BLOCK WALL - BELOW GRADE - INSIDE APPLICATION**



— — CONCENTRATE SLURRY COAT

■ CONCENTRATE DRY-PAC

— — MEGAMIX I

- ① PRIOR TO PLACEMENT OF THE CONCRETE WALL AND SLAB, APPLY ONE SLURRY COAT OF XYPEX CONCENTRATE TO JOINT SURFACES AT THE RATE OF 2.0 LB./SQ. YD. (1.0 KG/M<sup>2</sup>)
- ② IN SEALING STRIP, APPLY ONE SLURRY COAT OF XYPEX CONCENTRATE AT THE RATE OF 1.5 LB./SQ. YD. (0.8 KG/M<sup>2</sup>), THEN FILL SLOT TO SURFACE WITH XYPEX CONCENTRATE IN DRY-PAC FORM.
- ③ TO INSIDE WALL SURFACE APPLY ONE COAT OF XYPEX CONCENTRATE AT THE RATE OF 2.0 LB./SQ.YD. (1.0 KG/M<sup>2</sup>). AFTER THE CONCENTRATE HAS SET BUT WHILE IT IS STILL "GREEN", APPLY A COAT OF XYPEX MEGAMIX I AT THE RATE OF 11.25 LB./SQ.YD. (5.5 KG/M<sup>2</sup>).

**NOTE: BECAUSE OF THE VARIANCES IN THE QUALITY OF CONCRETE BLOCK (E.G. CEMENT, CONTENT, POROSITY, ETC.), PLEASE CONSULT YOUR XYPEX TECHNICAL REPRESENTATIVE.**

**SCHEMATIC DIAGRAM SHOWS XYPEX COATINGS APPLICATION ONLY AND DOES NOT DEPICT THE STANDARD REQUIREMENTS FOR WATERSTOPS, EXPANSION JOINT SEALANTS, OR POINTING REPAIRS THAT MAY BE REQUIRED.**

**REFER TO STANDARD SPECIFICATIONS FOR FURTHER INFORMATION.**