

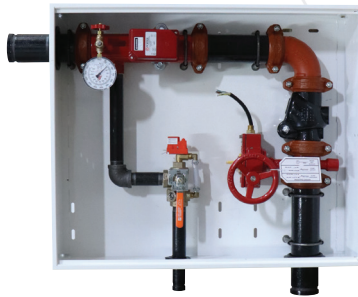
RISERMOUNT™

Turnkey Floor Control Mounts

QUALITY COMPONENTS FOR FIRE SPRINKLER SYSTEMS



Drain Left



Supply Left



Drain Right



Supply Right

RISERPACK Turnkey Floor Control Systems

AGF RiserMOUNT Turnkey Floor Controls are installation ready, include every component of a fully functional floor control, and come fully assembled in a lockable, easy to mount, enclosure. They feature a control valve, check valve, AGF RISERPACK with flow switch, 3-way test valve, and pressure gauge, and an AGF TESTANDRAIN inspector's test valve with pressure relief valve that can be lock-out during hydrostatic testing and doesn't have to be removed from the system, with drain trim.

RiserMOUNT Turnkey Floor Controls come in two different configurations and can be utilized as a riser or floor control depending on installation orientation. The drain left option (vertical) can be mounted horizontally as a supply left option and a drain right option that can be mounted horizontally as a supply right option. Vertical installation of the RiserMOUNT is specifically designed to fit between a double spaced stud cavity and horizontal installations will fit in a custom stud cavity.



WWW.AGFMFG.COM