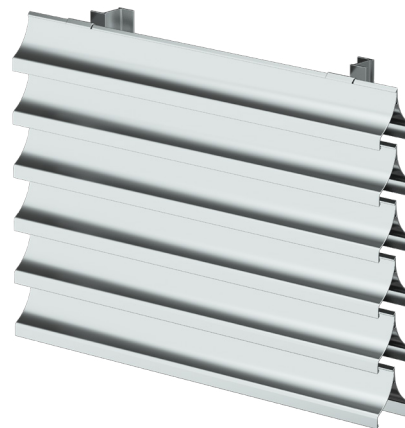


# SCB601

Equipment Screen | Extruded Aluminum

## Standard Construction

|                                  |                             |
|----------------------------------|-----------------------------|
| <b>Material</b>                  | Extruded 6063-T5 aluminum   |
| <b>Stationary Blade</b>          | 0.081 in. (2.06 mm)         |
| <b>Vertical Support</b>          | Extruded aluminum Z support |
| <b>Louver Screen Depth</b>       | 4 in. (101.6 mm)            |
| <b>Free area - 4 ft. x 4 ft.</b> | 5.65 sq. ft. (0.52 sq m)    |
| <b>Percent Free Area</b>         | 35%                         |



Airolite equipment screen SCB601 is a sightproof horizontal blade equipment screen that functions well as a sight and security barrier. The equipment screen is 100% sightproof when viewed from any orientation.

## Standard Details

[SCB601 Standard Details](#)

## Document Links

[Grilles & Screens](#)

[Finishes & Colors](#)

[Airolite Warranty Statement](#)

