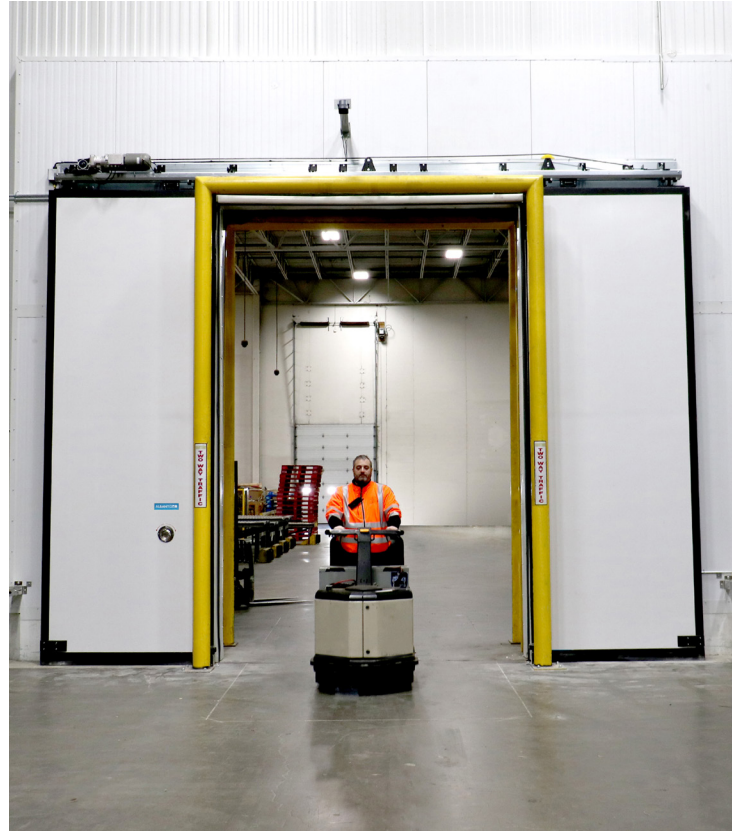


RS2400 Freezer

Product Specifications

DESIGN HIGHLIGHTS

- Opening Speed Up To 125" Per Second
- 4" Panel Thickness – R17, with a Compressible Close Cell EVA Foam Core
- White Thermoplastic Flexible Panel Outer Shells
- Polyurethane Elastomer Perimeter Panel Edges
- Full Perimeter Adjustable Gasket Seals
- Heavy-Duty Galvanized "Down and In" Track System
- Manual Panel Release Capability
- NEMA 4X Panel with Self Diagnostic Controller with HMI Display and E-Stop Button Included
- Standard Open/Close/Stop through HMI
- Time Delay Closing
- Self Regulating Heat Around 3 Sides Door Opening (Sides/Top)
- (2) Sets Of Through Beam Reversing Photo-Eyes
- Five-Year/One Million Cycle Limited Warranty on Mechanical Components And Door Controller
- Five-Year/Unlimited Cycle Warranty on EVA Foam Panels



Representative image only

4Front Engineered Solutions reserves the right to change specifications and designs without notice and without incurring obligations.

PROJECT INFORMATION

JOB NAME _____

ADDRESS _____

GENERAL CONTRACTOR _____

DISTRIBUTOR _____

MODEL _____ QUANTITY _____

CERTIFIED FOR CONSTRUCTION

BY _____

COMPANY _____

ADDRESS _____

DATE _____

CONTROLLER OPTIONS

- 460V - 3 PH
- 230V - 1 PH (size dependent)
- 230V/208V - 3 PH
- 575V - 3 PH
- NEMA 4X SS Control Box
- NEMA 4X Composite Control Box
- NEMA 4X Sloped Control Box
- Heated Control Box
- Heated Motor
- Heated Track
- Remote Mounted HMI

ACTIVATION OPTIONS

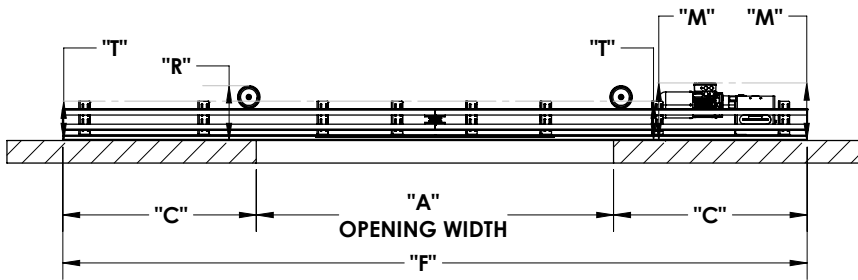
- Remote Mounted Push Button NEMA 4X
- (2) remote Mounted Pull Cord NEMA 4X
- (2) Motion Detectors
- (1) Extended Motion Detector Mounting Bracket
- (1) Loop Detector
- Other _____

HEATER AND BLOWER OPTIONS

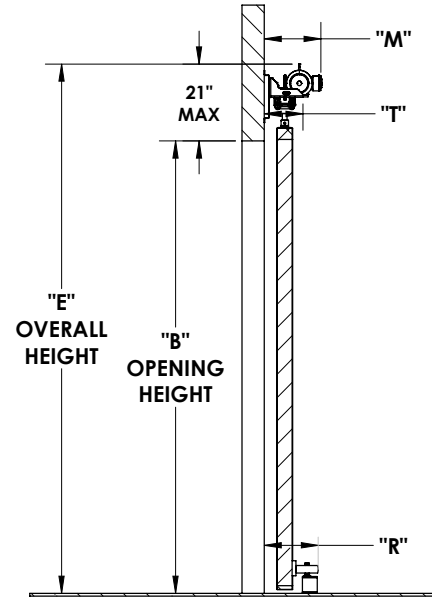
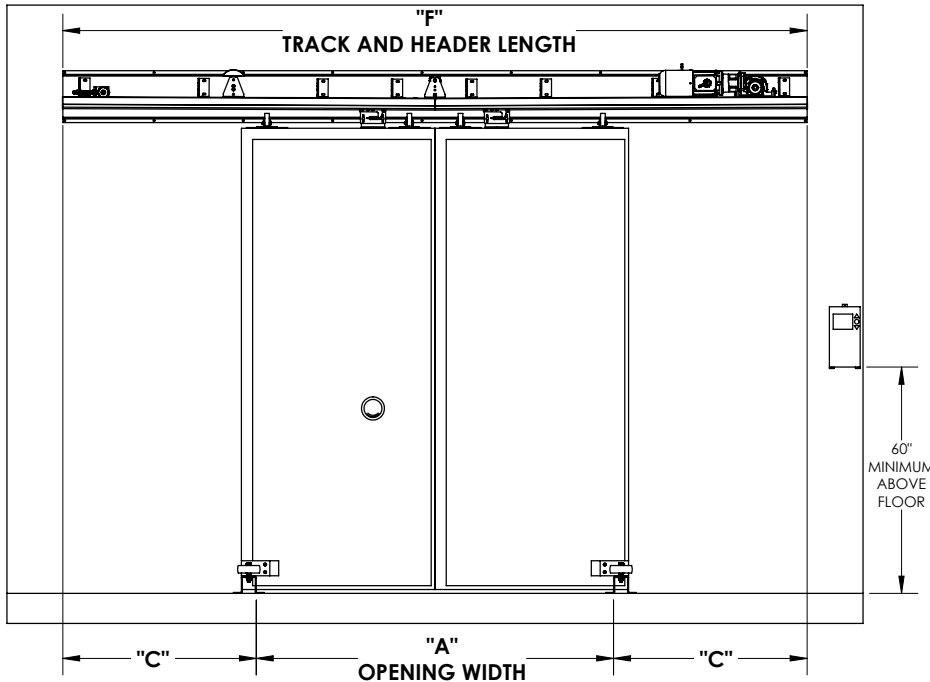
- Side Mounted 18" fans with 42" arm
- Full Width Heated Defrost Blower
- Selector Switch - On No Heat/On Heat/Off
- Single Control Panel To Allow Single Power
- Drop For Door and Blower

DOOR OPTIONS

- 6" Panel Thickness
- 8" Panel Thickness
- 10" Panel Thickness
- HDPE Mirror Image Header
- HDPE Mirror Image Face Casings
- Breakaway Floor Hardware
- Galvanized Rail and Operator Cover
- SS Rail and Operator Cover
- Blue Panel Color
- White Panel Color (standard)



	"M"	"T"	"Rs"	"Rc"
4" PANEL (R17)	15.25	10.5	14.5	11.75
6" PANEL (R25)	16.25	10.5	16.5	13.75
8" PANEL (R32)	17.75	13.75	18.5	15.75



Albany
 13850 101st Street, Suite B
 Kenosha, WI 53142
 800.459.1930
www.albanydoors.us