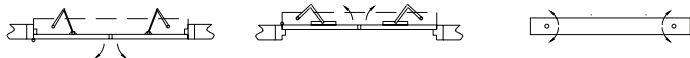


Operation

- Automatic sensor activation (ANSI A156.10)
- Push plate activation (ANSI A156.19 or A156.10)
- Push and go feature allowing door to open automatically when operator senses movement of door (ANSI A156.19)
- Power assist open – provides easy to open push forces (ANSI A156.19)
- Internal, push to open, push to close (i.e., ratchet relay) (ANSI A156.19)
- Speed controlled Extended Closing Torque (ECT) to provide power assist close with on-board functionality to automatically adjust torque without increasing speed
- Loss of Power: the operator controls the door closing, preventing slamming of door
- Torque Limiting: if positive air pressure condition is removed, operator compensates accordingly and will not slam



Door Operator Handings

Electric Lock Management

- Lock monitoring prevents operator(s) from opening door(s) until release of electrified lock
- Operator pulls door closed before opening, unjamming electric latch hardware
- Sequenced operation between operators for pairs of doors allowing lock release and astragal coordination
- Electric Lock Output: selectable 12 VDC, maximum 1200 mA / 24 VDC, maximum 600 mA

Sensor Monitoring

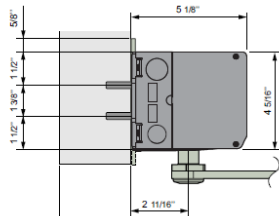
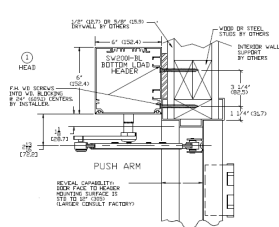
- Monitored Door Mounted Presence Sensors – upon detection of sensor failure, the operator will automatically revert to low energy mode
- Blanking Potentiometer: tells sensors on swing side of door when to shut off
- Torque Cancellation – Extended Closing Torque (ECT) is deactivated if signal is received from door mounted presence sensors of a possible obstruction

Aesthetics

- Aesthetically pleasing, low profile appearance: 4-5/16" (109mm) high by 5-1/8" (130mm) deep
- Continuous header for full width of door
- Same header/housing as ASSA ABLOY PowerSwing and ASSA ABLOY SW100 for consistent sightlines in your facility
- Finishes: anodized, powder coat, Kynar, clad

Configurations

- Surface Applied • Side Load • Bottom Load



Authorities

- UL/CUL approved
- UL Listed Fire Door Operator
- UL10C, UL325, UL991, UL244A, UL1998, UL1310
- IBC and CBC
- ANSI A156.10 / ANSI A156.19
- CAN/CSA-C22.2 NO 223-M91 and CAN/CSA-C22.2 NO 223-M92
- California State Fire Marshall

Sensor Packages

- Sensor Packages as follows:
 - ANSI A156.19**
 - Activation: push plates per your selection
 - Safety devices: not required per ANSI. Optional door mounted presence sensors (DMPS) are available

ANSI A156.10

- Activation: push plates per your selection (motion sensors or push plates)
- Choice of ASSA ABLOY i-Adapt™ door mounted presence sensor system:
 - A202 – ASSA ABLOY i-Adapt Premium – stand alone, adapted field, door mounted presence sensors (DMPS)
 - A102– ASSA ABLOY i-Adapt Flex – overhead presence sensor (OPS) and one door mounted presence sensor (DMPS) per swing and non-swing side
 - A101 – ASSA ABLOY i-Adapt Flex - overhead presence sensor (OPS) and one door mounted presence sensor (DMPS) swing side
 - A100 – ASSA ABLOY i-Adapt Flex – Knowing Act applications – dual egress only – overhead presence sensor (OPS) and motion sensor secondary activation per ANSI A156.10

Authorities

Operator type	Electro-mechanical
Door width	36" – 48" (914 – 1219mm)
Door weight	100 – 700 lb (45 – 315 kg)
Power supply	120 V AC +10/-15%, 50/60 hz
Power consumption	Max. 300W
Auxiliary voltage	24 V DC, max. 700 mA
Internal control fuse	2 x T 6, 3 AH 250 V
Electro-mechanical locking device	Selectable: 12V DC, max. 1200 mA / 24 V DC, max. 600 mA
Door opening	Push: 80 – 110° with reveal 0 – 12" (0 – 305mm) Pull: 80 – 110° with reveal 0 – 5-1/8" (0 – 130mm) PAS: 80 – 95° (concealed application)
Opening time (0 – 80°)	Variable between 2 – 12 seconds
Closing time (90 – 100°)	Variable between 4 – 12 seconds
Hold open time	1,5-30 seconds
Ambient temperature	-31° F to 160° F (-35° C to 71° C)
Relative humidity	Max. 85%
Drive weight unit (non-condensing)	19.8 lb (9 kg)
This product is to be installed internally or externally with suitable weather protection.	
Class of protection	IP 20.
Complies with: ANSI/BHMA A156.19, ANSI/BHMA A156.10, UL325, UL 991, UL 244A, UL 1998, UL 1310, UL 10C, CAN/CSA-C22.2 NO 223-M91, CAN/CSA-C22.2 NO 247-92 and CA State Fire Marshall	