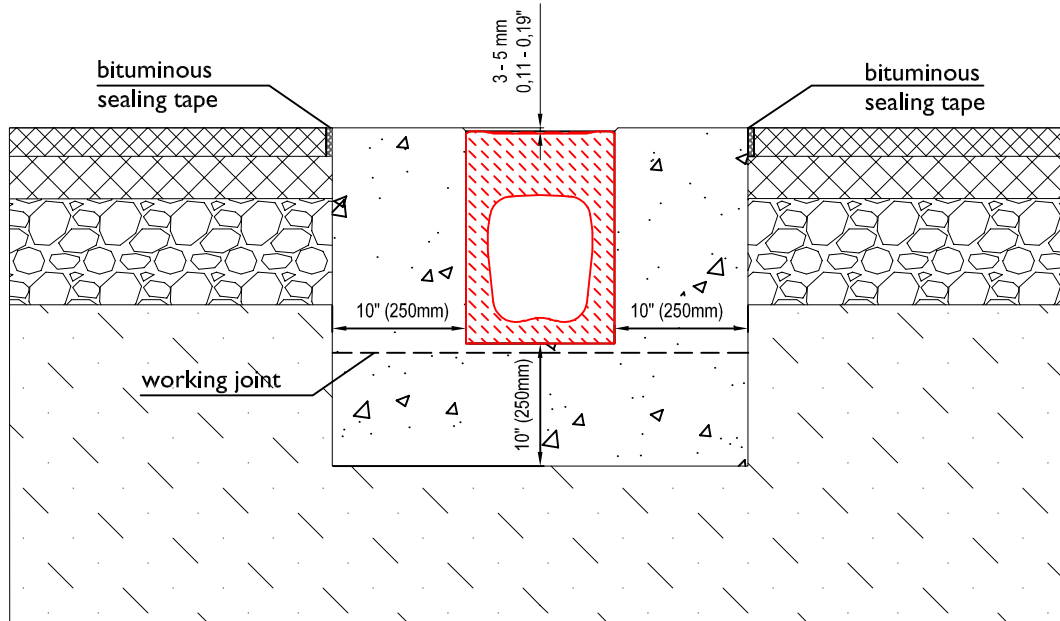


FILCOTEN one NW150 (6") INSTALLATION DRAWING - Load class F 900 kN ASPHALT PAVEMENT



SPECIFICATIONS

FILCOTEN one NW150 - LOAD CLASS F900

GENERAL

THE SURFACE DRAINAGE SYSTEM SHALL BE FILCOTEN HPC (HIGH PERFORMANCE CONCRETE) NW150 CHANNEL SYSTEM AS MANUFACTURED BY BG GRASPOINTNER AND DISTRIBUTED BY BG GRASPOINTNER INC., A WHOLLY OWNED SUBSIDIARY.

MATERIALS

CHANNELS SHALL BE MANUFACTURED FROM FILCOTEN HPC (HIGH PERFORMANCE CONCRETE). MINIMUM PROPERTIES OF FILCOTEN HPC (HIGH PERFORMANCE CONCRETE) WILL BE AS FOLLOWS:

COMPRESSIVE STRENGTH:	11,700 PSI
FLEXURAL STRENGTH:	1,700 PSI
FREE OF RELEASE AGENTS:	YES
WATER ABSORPTION SUFFICIENT FOR ADHESION WITH CONCRETE SURFACES:	YES
NON-FLAMMABLE:	YES
U/V RESISTANT:	YES
RECYCLABLE 100%:	YES
DILUTE ACID AND ALKALI RESISTANT:	YES
FROST THAW SALT TESTED AS PER EN1433 WITH A TEST TEMPERATURE UP TO -40°C (-40°F):	YES
RESISTANT TO RAPID FROST & THAWING ACCORDING TO ASTM C666:	YES
RESISTANT TO CHLORIDE ION PENETRATION ACCORDING TO ASTM C1202:	YES
MATERIAL FREE OF VOC, BIOCIDES, HEAVY METALS:	YES

THE SYSTEM SHALL BE 6" (150mm) NOMINAL INTERNAL WIDTH WITH 11.81" AND 19.68" (300mm AND 500mm) OVERALL DEPTH. IT IS A NON-SLOPED CHANNEL THAT CAN BE ADAPTED TO A STEPPED SLOPE SYSTEM. ALL CHANNELS ARE EQUIPPED WITH AN INTERLOCKING TONGUE/GROOVE/TENON SYSTEM AND AN OPTIONAL SEALANT PROFILE FOR THE JOINT SEALING.

THE COMPLETE DRAINAGE SYSTEM SHALL BE BY BG GRASPOINTNER INC. ANY DEVIATION OR PARTIAL SYSTEM DESIGN AND/OR IMPROPER INSTALLATION WILL VOID ANY AND ALL WARRANTIES PROVIDED BY BG GRASPOINTNER INC.

CHANNEL SHALL WITHSTAND LOADING TO PROPER LOAD CLASS AS OUTLINED BY EN 1433. THE SYSTEM SHALL BE INSTALLED IN ACCORDANCE WITH THE MANUFACTURER'S INSTRUCTIONS AND RECOMMENDATIONS.

NOTES:

- IT IS NECESSARY TO ENSURE MINIMUM DIMENSIONS SHOWN ARE SUITABLE FOR EXISTING GROUND CONDITIONS. ENGINEERING ADVICE MAY BE REQUIRED.
- MINIMUM CONCRETE STRENGTH OF 4,000 PSI IS RECOMMENDED. CONCRETE SHOULD BE VIBRATED TO ELIMINATE AIR POCKETS.
- EXPANSION AND CONTRACTION CONTROL JOINTS AND REINFORCEMENT ARE RECOMMENDED TO PROTECT CHANNEL AND CONCRETE SURROUND. CONTRACTION CONTROL JOINTS ARE RECOMMENDED EVERY 2m AT THE CHANNEL JOINT ALTERNATIVELY. ENGINEERING ADVICE MAY BE REQUIRED.
- THE FINISHED LEVEL OF THE CONCRETE SURROUND MUST BE APPROXIMATELY 0.11" - 0.19" [3mm - 5mm] ABOVE THE TOP OF THE CHANNEL EDGE.
- CONCRETE BASE THICKNESS SHOULD MATCH SLAB THICKNESS. ENGINEERING ADVICE MAY BE REQUIRED TO DETERMINE PROPER LOAD CLASS.
- REFER TO BG-GRASPOINTNER'S LATEST INSTALLATION INSTRUCTIONS FOR FURTHER DETAILS.