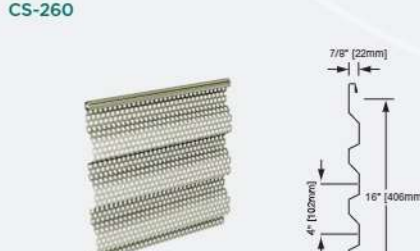
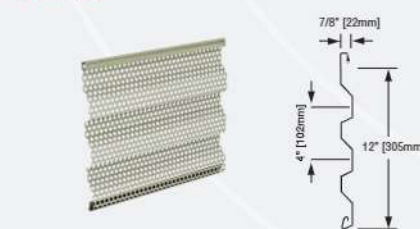
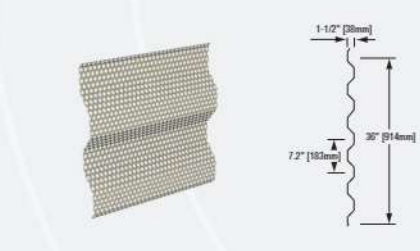
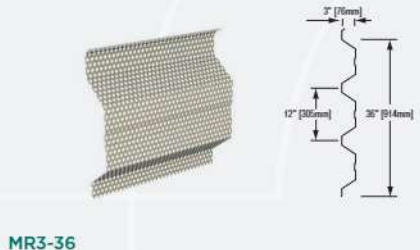
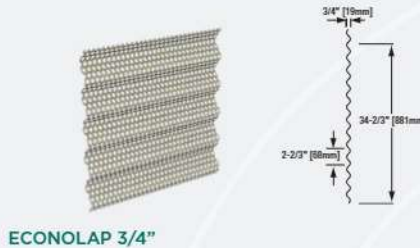
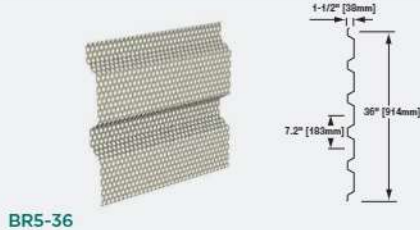


ECOSCREEN®

PERFORATED SCREENWALL

BR5-36, ECONOLAP 3/4", MR3-36, STYLE-RIB, CS-260, CS-660

TECHNICAL DATA SHEET



DESCRIPTION

An assortment of profiles ranging from 12" [304.8mm] to 36" [914.4mm] wide with six different perforation patterns makes EcoScreen the perfect selection of screening material to control light, provide air movement or secure and conceal operational equipment. All EcoScreen panels are exposed fastener and can be installed in vertical or horizontal applications. EcoScreen panels are available in 2B finished stainless steel or in CENTRIA's painted finishes on aluminum.

GENERAL DESIGN OPTIONS

ECOSCREEN		
	STAINLESS STEEL ¹ (304)	ALUMINUM ¹ (3003-H14)
PANEL THICKNESS	Dependent on profile, see illustrations to left	Dependent on profile, see illustrations to left
PANEL ORIENTATION	Horizontal or Vertical	Horizontal or Vertical
PANEL COVERQAGE	Dependent on profile, see illustrations to left	Dependent on profile, see illustrations to left
SIDE LAP	Overlapping side joint for all profiles except CS Interlocking side joints for CS	Overlapping side joint for all profiles except CS Interlocking side joints for CS
END LAPS	Overlapping end joints for all panels except CS. Reveal flashing, fin joint flashing or Microline extrusions for CS panels.	Overlapping end joints for all panels except CS. Reveal flashing, fin joint flashing or Microline extrusions for CS panels.
STANDARD GAUGES ¹	20 [0.91mm]	0.040" [1.02mm]
STANDARD LENGTH	5' [1.524m] - 30' [9.144m]	5' [1.524m] - 20' [6.096m]
STANDARD TEXTURE	Smooth	Smooth
FINISHES	Standard - 2B Optional - #4 Brushed	See CENTRIA Color Chart

¹. Alternate base material, panel lengths and gages may also be available. Contact CENTRIA.

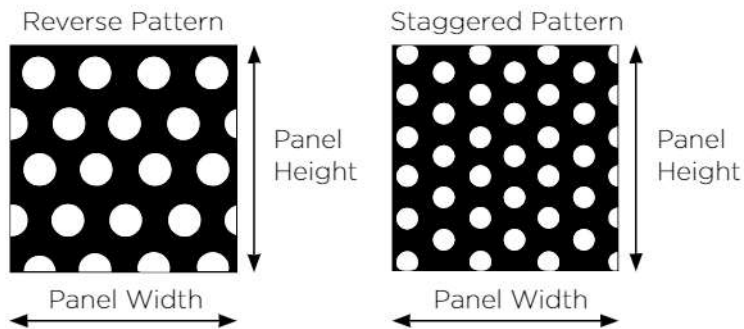
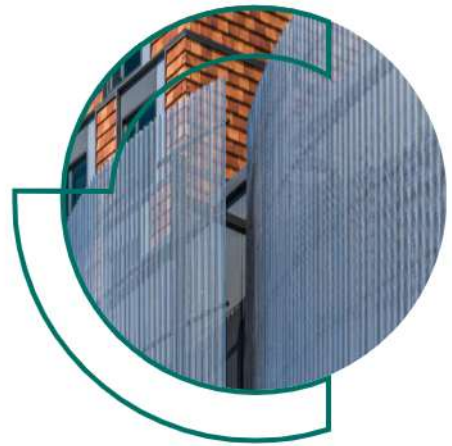
PERFORATION PATTERN OPTIONS

OPEN/FREE AREA PERCENTAGE	PATTERN	DIAMETER	SPACING
10%	Reverse	1/8"	3/8"
23%	Staggered	1/8"	1/4"
23%	Reverse	1/4"	1/2"
30%	Staggered	1/8"	7/32"
33%	Staggered	3/16"	5/16"
40%°	Staggered	1/8"	3/16"
40%	Staggered	3/8"	9/16"

° Pattern is not available in stainless steel for Style-Rib, BR5-36 or MR3-36

ECOSCREEN DESIGN FEATURES & BENEFITS

- 10% - 40% area that provides an airy aesthetic
- Several perforation pattern options
- May be installed horizontally or vertically
- Masks rooftop building equipment
- Can be backlit
- Provides ventilation and security
- Controls light pollution
- Available in 2B finished stainless steel or pre-painted finishes on aluminum



NOTES

- A. For information on special applications, contact your local CENTRIA Sales Representative.
- B. All EcoScreen panels may be used on walls and soffits but not on roofs.
- C. Panel length tolerance is $\pm 1/4"$ [6mm].
- D. For protective coatings see CENTRIA color chart.
- E. Oil canning within mill tolerances will not be cause for rejection.