

# AeroLift 100

Ceiling-Recessed Projector Lift with a 100 lb. (45kg) Lifting Capacity



## SUBMITTAL TECHNICAL INFO

### Specifications

Please check all appropriate selections and attach room schedule with verified dimensions.

#### QUANTITY:

#### VIDEO PROJECTOR LIFTS.

Maximum capacity 100 lbs. (including projector, bracket, closure and ceiling material attached to closure). Electrically operated 110-120V, 60 Hz. 3-wire motor, instantly reversible, lifetime lubricated, with internal thermal overload protector and brake. UL approved motor. Designed to be ceiling recessed or surface mounted. Lift to have scissor arm for stabilization. Factory set limit switches automatically stop travel at open and closed positions. Three-position, 110-120V switch to stop or reverse cycle at any point. Maximum vertical drop to be 38 1/2". Net weight: AeroLift 100, 28 lbs.

**AEROLIFT 100 IS APPROVED TO UL 2442 AND CSA C22.2 NO. 60065-03.**

#### AEROLIFT 100

#### OPTIONS

##### OPTIONAL ENVIRONMENTAL AIR SPACE

**HOUSING:** Aluminum and steel, for use in return Environmental Air Space situations. Net wt: AeroLift 95 1/2 lbs. Includes trim ring for ceiling opening.

**CEILING CLOSURE PANEL:** Finished in white baked textured powder coat, shall descend smoothly with projector.

**CEILING FINISH KIT:** Finished white. Trims ceiling opening when required. Consists of trim ring and closure panel.

**OPTIONAL CEILING ACCESS DOOR:** Provides ceiling access when unit is installed above hard ceiling and access to projector is not convenient. White painted finish.

**OPTIONAL UNIVERSAL PROJECTOR MOUNT:** Tilt, yaw and pan adjustment. Available in 2 sizes. **SMALL:** for projectors up to 26 lbs. **MEDIUM:** for projector up to 100 lbs.

**OPTIONAL VIDEO CONFERENCING CAMERA ADAPTER BRACKET:** Enables installation of a video conferencing camera in AeroLift 100. Available in two sizes (Dimensions **SMALL** 7 1/2" x 9" x 7 1/2" or **LARGE** 9" x 12" x 9"). Special brackets available for oversize or dual camera installation.

**Please Note:** The AeroLift 100 should be specified in conjunction with a Draper video format motorized screen. Specifications subject to change without notice.

AeroLift 100 is approved to UL 2442 and CSA C22.2 No. 60065-03. Downloadable 3-part specifications: available at [www.draperinc.com](http://www.draperinc.com)

**Please note:** Dimensions of rollers, operators, and hardware at manufacturer's discretion.

### Select Control Options:

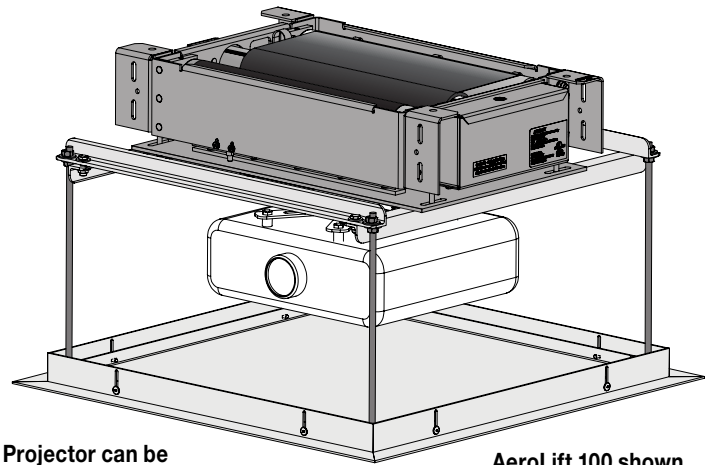
**Please Note:** This Draper motorized lift comes with one 110V-120V AC 3-position wall switch (silver wall plate with black rocker).

- \_\_\_\_\_ Total number of 110-120V AC switches  
(switches operate independently)
- ☐ Substitute white switch(es) for silver wall plate with black rocker
- ☐ Optional Lift Low Voltage Control Module
- ☐ 24 Volt 3-Button Switch      How many switches? \_\_\_\_\_
  - ☐ Radio Frequency Remote Control (only with 24V)
  - ☐ Infrared Remote Control (only with 24V)
- ☐ Optional Key Operated Switch
- ☐ Power Supply Key Switch (On-off)
  - ☐ 3-Position Key Control
  - ☐ 3-Position Switch with Hinged Key-Locking Coverplate

### Select Optional Accessories (drawings on pages 2 & 3)

**Please Note:** Available colors listed where applicable. AeroLift is always black.

- ☐ Optional Ceiling Access Door:
- ☐ Access above finished ceiling (recommended)
  - ☐ Accepts Ceiling Tile
- ☐ Optional Environmental Air Space Housing:  
(Optional Ceiling Closure Panel not included.)
- ☐ Powder Coat Finish of Visible Trim:
    - ☐ White (Standard)
    - ☐ Black (Optional)
- ☐ Optional Ceiling Closure Panel:  
(Pairs with Environmental Air Space Housing.)
- ☐ Powder Coat Finish:
    - ☐ White (Standard)
    - ☐ Black (Optional)
- ☐ Optional Ceiling Finish Kit:  
(Ceiling Closure Panel and Trim Kit used to finish ceiling opening when no Environmental Air Space Housing is needed.)
- ☐ Powder Coat Finish:
    - ☐ White (Standard)
    - ☐ Black (Optional)
- ☐ Optional Universal Projector Mount
- ☐ Small (Max. Load 26 lbs.)      ☐ Large (Max. Load 100 lbs.)
- ☐ Optional Video Conferencing Camera Adapter Bracket
- ☐ Small (9" w. x 7 1/2" h. x 7 1/2" d.)      ☐ Large (12" w. x 9" h. x 9" d.)
  - ☐ Custom for oversize or dual cameras



Projector can be installed as shown or turned 90° depending on projector size.

AeroLift 100 shown with optional closure.

### Dimensions & Data

	AeroLift 100
Height of lift in closed position <sup>1</sup>	6"
Maximum Overall lift dimensions (WxL)	28 1/4" x 15"
Ceiling opening (with closure)	29 1/2" x 29 1/2"
Optional Env. Air Space Housing (WxL) <sup>2</sup>	30 1/4" x 29 7/16"
Max. projector size (with closure) (WxL) <sup>3</sup>	25 3/8" x 28 1/16" x h.
Max. down travel	38 1/2"
Approx. travel time to lowest position	23 sec.
Total Capacity (lbs.) <sup>4</sup>	100
Net weight of lift (lbs.) <sup>5</sup>	28
Amperes	1.2

<sup>1</sup> Not including projector, bracket, plenum or closure.

<sup>2</sup> Max. available projector/mount height (with EAS Housing): 18 1/2".  
Min. available projector/mount height (with EAS Housing): 16 1/2".

<sup>3</sup> AeroLift 100 closure & angle brackets weigh 7.5 lbs.

<sup>4</sup> Unit Only: Does Not include projector, bracket, EAS Housing or closure.



Draper, Inc. | 411 S. Pearl St. Spiceland, IN 47385  
draperinc.com | 765.987.7999 | 800.238.7999  
© 2022 All Rights Reserved | FORM: AeroLift100\_Sub22

PROJECT: \_\_\_\_\_

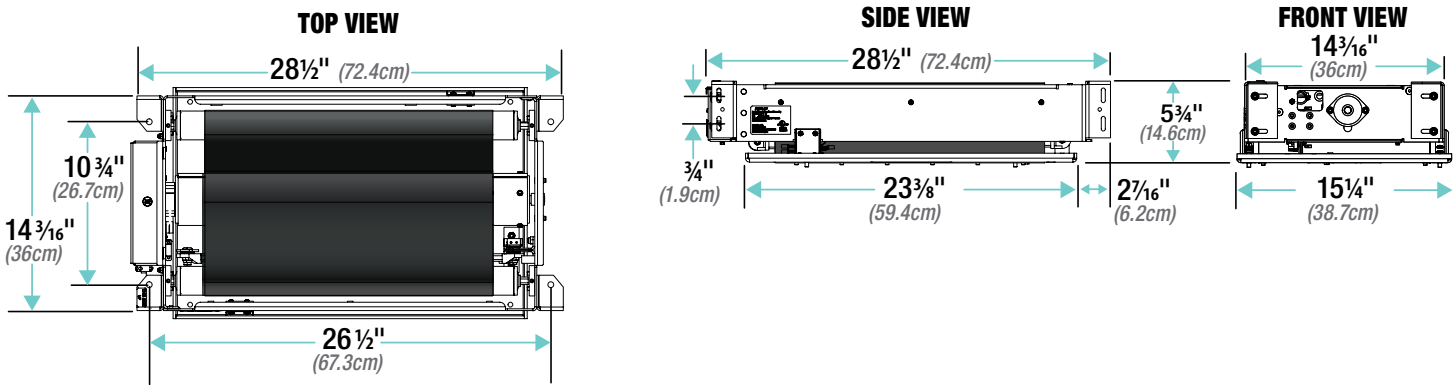
ARCHITECT: \_\_\_\_\_

CONTRACTOR: \_\_\_\_\_

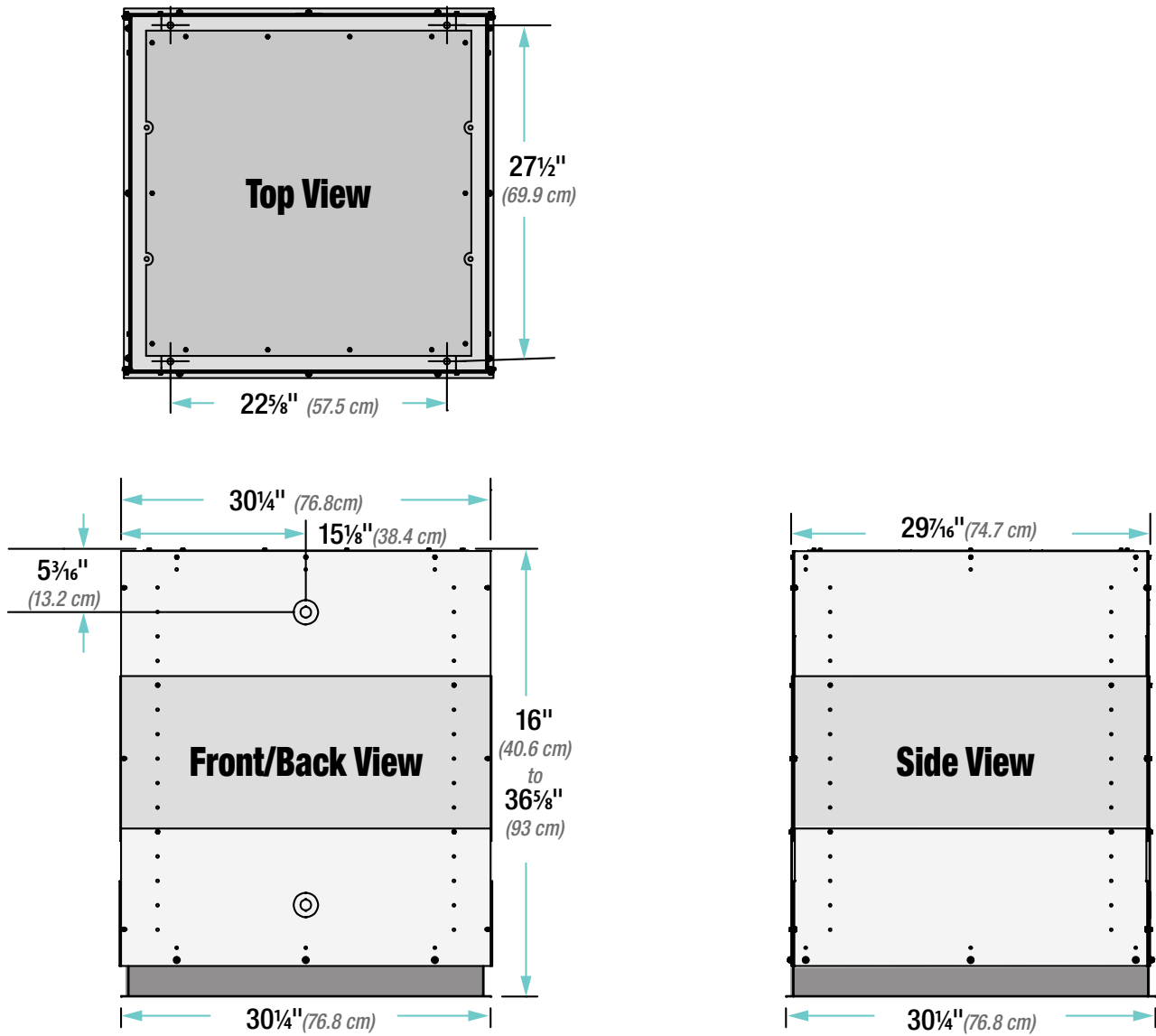
SUPPLIER: \_\_\_\_\_

DATE: \_\_\_\_\_ REVISED: \_\_\_\_\_

Dimensions

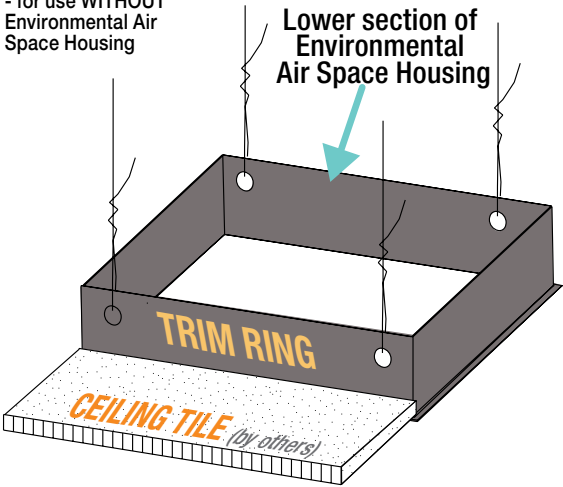


Dimensions - AeroLift 100 with Environmental Air Space Housing & Closure Pane

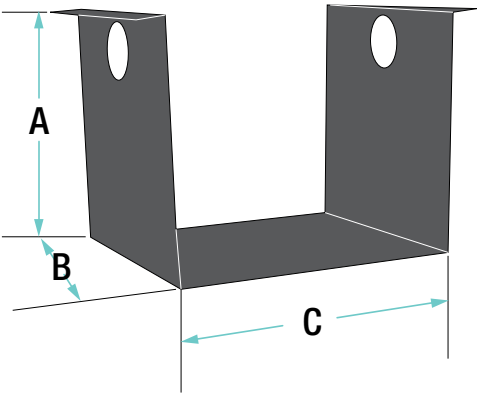


Ceiling Finish Trim Kit

Includes Closure Panel  
- for use WITHOUT  
Environmental Air  
Space Housing



Optional Video Conferencing Camera Adapter

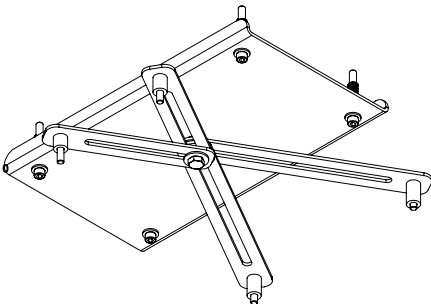
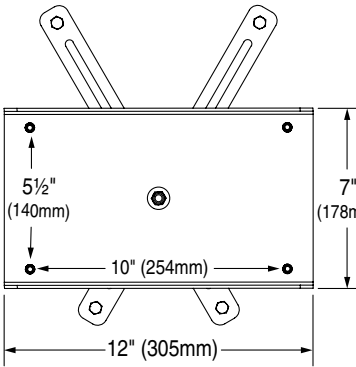
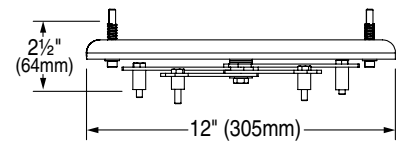


Available Sizes:

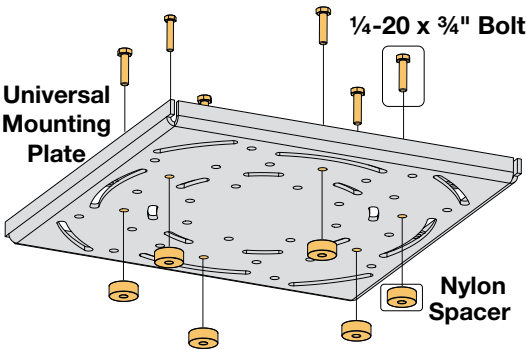
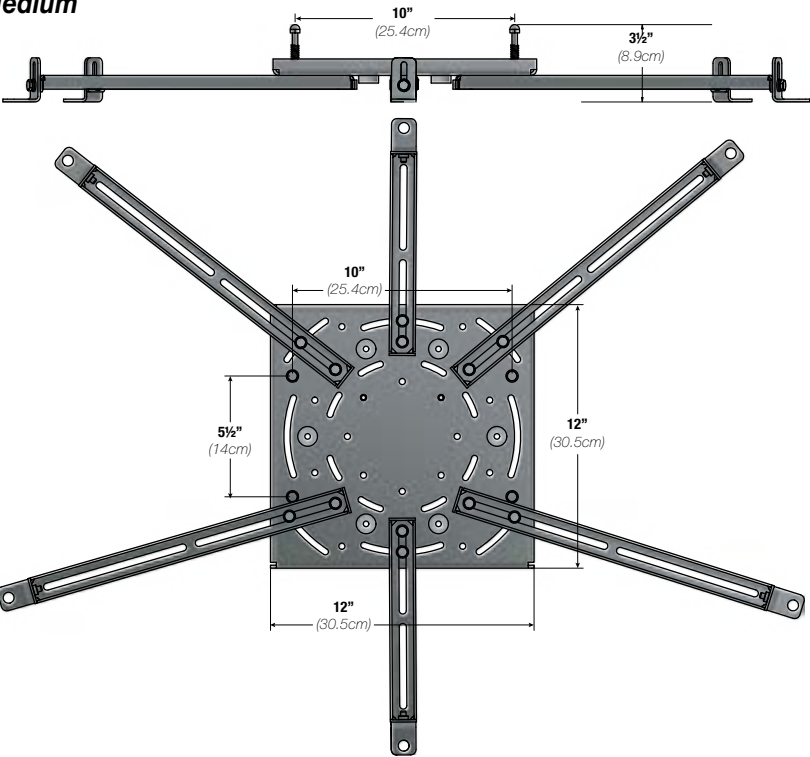
	A	B	C
Small	7½"	7½"	9"
Large	9"	9"	12"

Optional Universal Projector Mount

Small

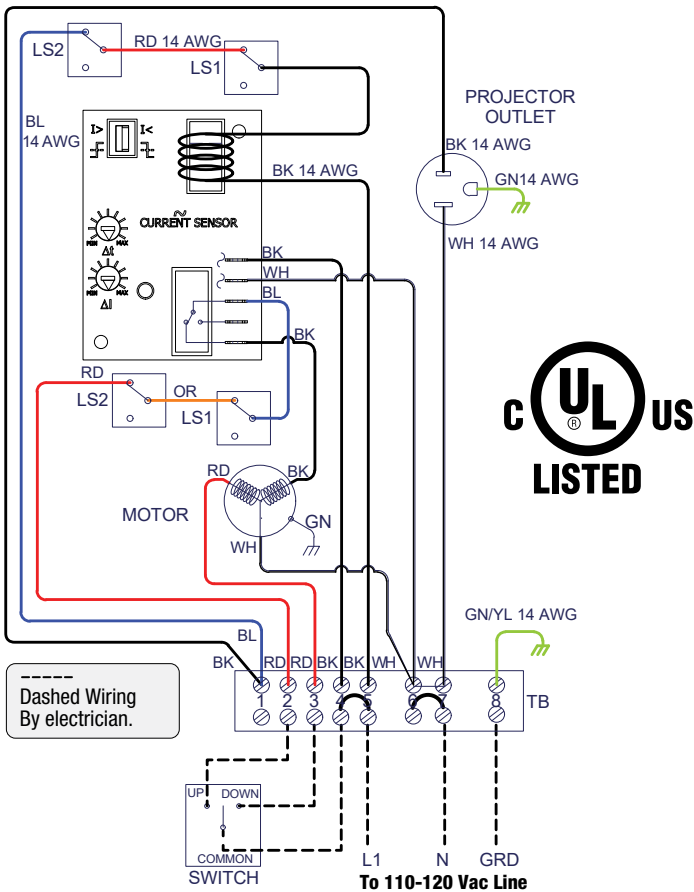


Medium

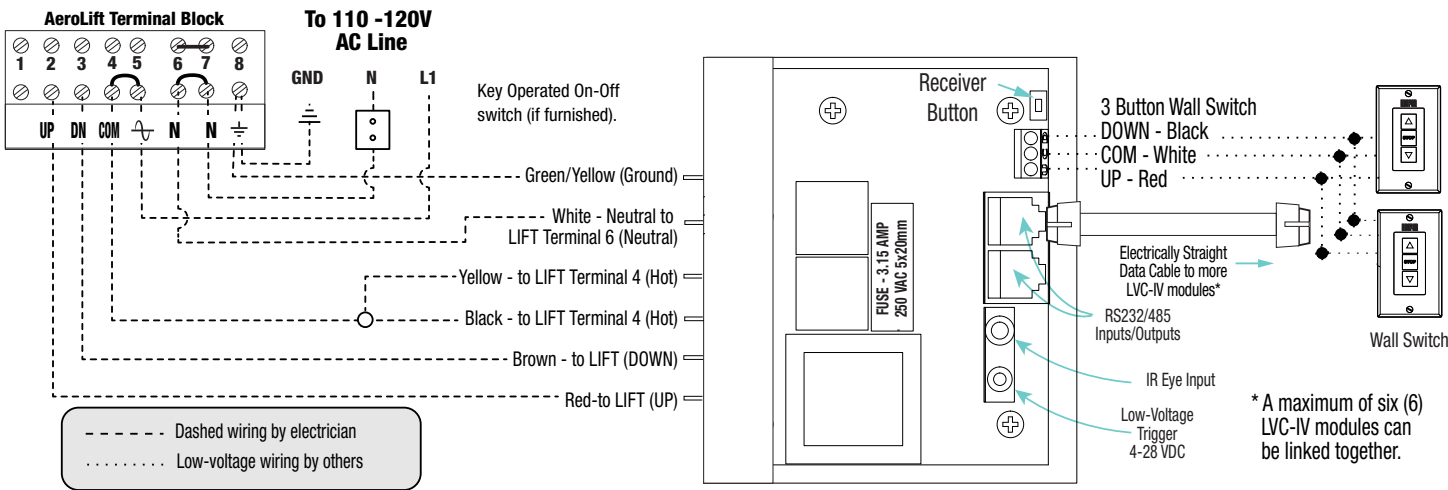


Wiring Diagrams

Single Station Control



LVC-IV - Low Voltage Controller



PROJECT: \_\_\_\_\_

ARCHITECT: \_\_\_\_\_

CONTRACTOR: \_\_\_\_\_

SUPPLIER: \_\_\_\_\_

DATE: \_\_\_\_\_ REVISED: \_\_\_\_\_