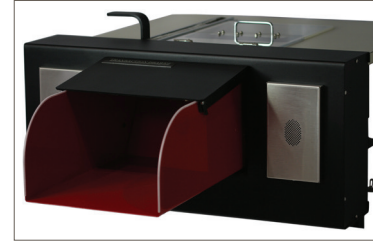


MANUAL TRANSACTION DRAWERS



PREMIUM MANUAL TRANSACTION DRAWER



BASIC MANUAL TRANSACTION DRAWER WITH COUNTERTOP

Ratings	NA	NA
Materials used	11-Gauge Steel Case, .050 aluminum bin, .125 Aluminum Door	14-Gauge Steel Case, 16-Gauge Steel Bin, 14-Gauge Steel Door
Finish options	Door and frame - black powder coat standard; bin - red standard (custom finishes available at additional cost)	Door and frame - black powder coat standard; bin - red standard (custom finishes available at additional cost)
Rough wall opening dimensions	10-3/4" H x 1'-4" W	14-7/8" H x 32-1/4" W
Unit dimensions (closed)	2' 5" L x 1' 3-5/8" W x 11" H	30" L x 32" W x 14-3/4" H total; 23-7/8" L x 29-7/16" W counter space
Drawer extension (dimensions of audio panel will change length of extension from the wall)	15" from drawer frame	16-11/16" from drawer frame
Bin dimensions	"17-1/2" L x 11" W x 6-9/16" H (1263 cu. in.)"	"17-7/8" L x 12-5/16" W x 8" H (1,760 cu. in.)"
Power requirements	Duplex outlet 120 VAC, 20 AMP	Duplex outlet 120 VAC, 20 AMP
Controls	Manual open and close	Manual open and close
Security features	Automatic teller & customer door; manual teller lock	Automatic teller & customer door; manual teller lock
Additional options	<p>Customer Door: door with bumper</p> <p>Drawer Accessories: bin heater kit, card reader cord kit</p> <p>Audio Panels: Bavsonic TD audio panel, Bavsonic SS TD audio panel, TD audio panel (for 4x4 speaker), TD audio panel SS (for 4x4 speaker), Bavsonic TD flat audio panel, SS flush audio panel, multiple panels to retrofit other manufacturers drawers, AA pigtail set (for connecting to other audio systems).</p>	<p>Drawer Accessories: Card reader cord kit, heater kit, double red bin heater kit</p> <p>Audio Panels: customer handset</p>
Audio included	None	None

Some products may be shown with accessories not included with standard offering or pricing.