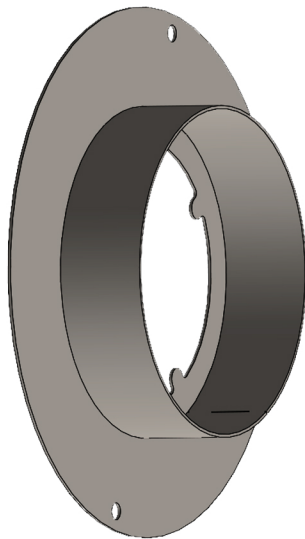




FireShieldLV.com • (702)622-9385

# Barri-Ring

Barri-Ring solves the existing problem for the protection of the membrane penetrations created in a fire rated wall by shower valves. This is perhaps the most overlooked firestop required item due to the complexities of a moving valve, numerous supply lines, and most times a non-metallic escutcheon plate. Barri-Ring is inserted into the valve access hole cut into the gypsum, thus eliminating any labor associated with the valve protection.



- 1 and 2 hr UL tested and listed, W-L-7325 for shower valve penetrations with code required equal "T" rating
- Tested in back to back configurations
- Minimum 2-1/2 inch shaft wall included
- Metal and wood stud framing
- Non-metallic and metallic escutcheon plates
- Barri-Ring constructed of Stainless Steel metal
- Center opening allows access to the line shut-off screws
- Barri-Ring installs into a 4-1/4 to 5 inch hole in the gypsum
- NO CAULKING REQUIRED!
- Patent Pending. Made in the United States of America