



## DATA SHEET: NUVO™ PANEL-SI (Snap In)

### Materials

Aluminum Sheet: 3003-H14 alloy (Suitable for paint finishes), or 5005-H34 alloy (For use with anodized finishes). Minimum thickness 20 Ga. (.032" / 0.8 mm)

Stainless Steel Sheet: Type 304 (Standard) or 316 (For higher degree of corrosion resistance). Minimum gauge 22 Ga. (.031" / 0.8 mm)

Galvanized Steel Sheet: Electroplated galvanized, Minimum 24 Ga. (.028" / 0.7 mm)

### Finishes

Aluminum: Baked polyester powder enamel, or two or three coat fluoropolymer coatings by PPG® or Valspar®, or gray polyester prime for field painting. Also Class I or II anodic treatments

Stainless Steel: Satin brush # 4, XL-Blend "S" Super-Satin Brush, Mirror # 8, Non-Directional Brush or Random Swirl.

Galvanized Steel Sheet: Baked polyester powder enamel, or gray polyester prime for field painting.

### Dimensions

Nominal 2x2, 2x4, 2x6, 2x8 are standard sizes. Custom sizes available upon request.

Please speak with your Nelson Representative to determine suitability of custom dimensions.

### Acoustics

Metal Ceilings are available both non-perforated (non-acoustic) and perforated (acoustic). Perforation patterns are limited only to the type of material and gauge chosen and available tooling. Presently Nelson offers more than fifty different perforation patterns ranging from diagonal, staggered to straight as well as round, square and oblong holes.

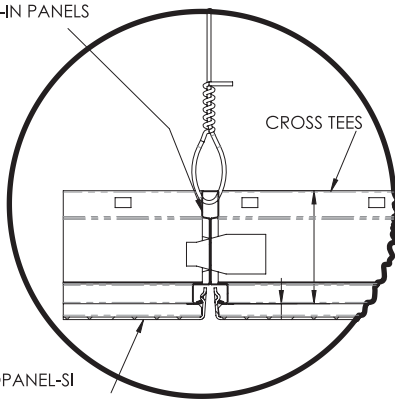
Our standard acoustical material consists of a Black or Off-White pre-laminated fleece (SoundTex®) typically bonded to the concealed face of the ceiling panel.

For more details and options see our booklet "Metalouges" - an introduction to architectural metals, or contact your local Nelson Sales Representative and request our Architectural Metals Binder.

### Standard References

- A. ASTM E84 - Standard Method of Test for Surface Burning Characteristics of Building Materials and Assemblies.
- B. AAMA 605.2 - Specification for High Performance Finishes.
- C. ASTM A 366/A 366M Standard Specification for Commercial Steel (CS) Sheet, Carbon (0.15 Maximum Percent) Cold-Rolled; 1997.
- D. ASTM A 666 Standard Specification for Annealed or Cold-Worked Austenitic Stainless Steel Sheet, Strip, Plate, and Flat Bar; 2000.
- E. ASTM B36/B 36M Standard Specification for Brass Plate, Sheet, Strip, and Rolled Bar; 2006.
- F. ASTM B 209/B 209M - Standard Specification for Aluminum and Aluminum-Alloy Sheet and Plate; 2004.

GRID TO ACCEPT SNAP-IN PANELS

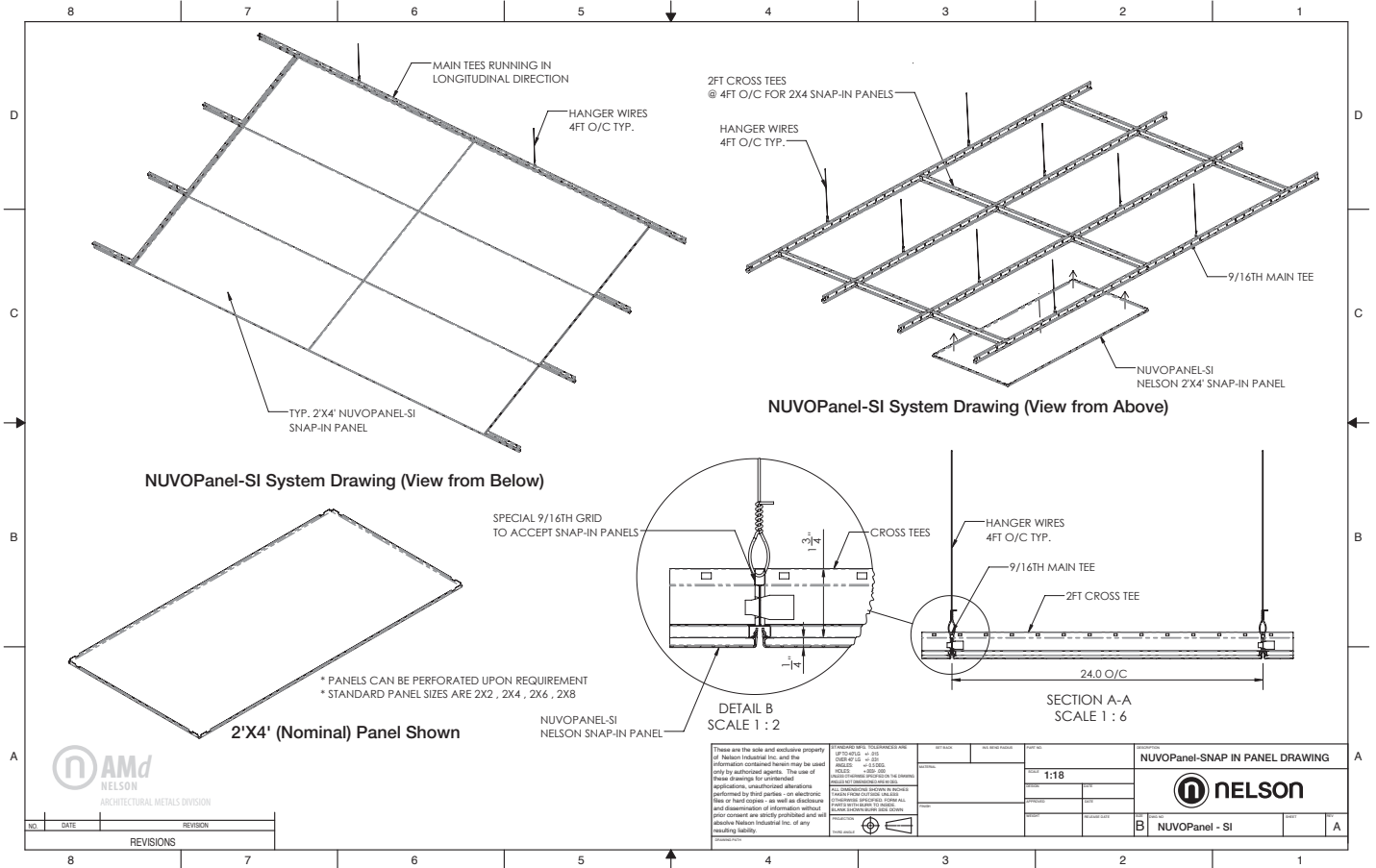


NUVOPANEL-SI  
NELSON SNAP-IN PANEL

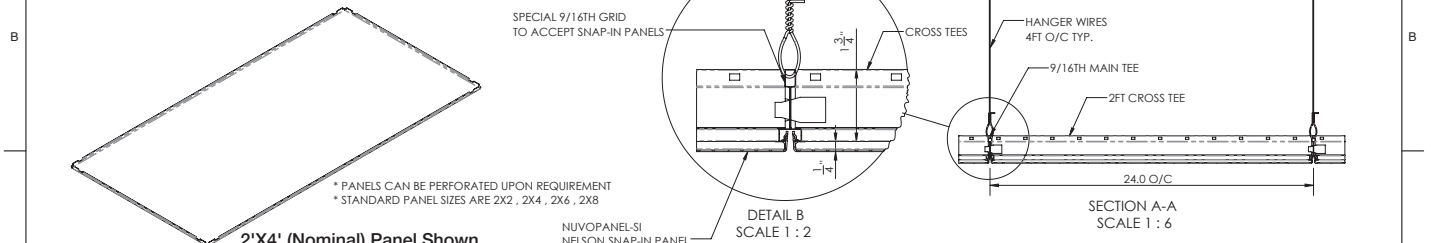




# NUVO™ PANEL-SI (Snap In)



NUVOPanel-SI System Drawing (View from Below)



2'X4' (Nominal) Panel Shown

\* PANELS CAN BE PERFORATED UPON REQUIREMENT  
\* STANDARD PANEL SIZES ARE 2X2, 2X4, 2X6, 2X8

NUVOPANEL-SI NELSON SNAP-IN PANEL

These are the sole and exclusive property of Nelson Industrial Inc. and the information contained herein may be used only by authorized agents. The use of these drawings for unapproved applications, unauthorized alterations, reproduction, or any other use without the express written consent of Nelson Industrial Inc. is strictly prohibited and will result in legal action.

DATE: 01/15/2013  
 DRAWN BY: J. J. JONES  
 CHECKED BY: J. J. JONES  
 APPROVED BY: J. J. JONES

|           |      |          |
|-----------|------|----------|
| NO.       | DATE | REVISION |
| REVISIONS |      |          |

|                                 |                |
|---------------------------------|----------------|
| NUVOPanel-SNAP IN PANEL DRAWING |                |
|                                 |                |
| B                               | NUVOPanel - SI |

