



ARCHITECTURAL METALS Division

DATA SHEET: **NUVO Walls** (Metal)



Materials

Aluminum Sheet: 3003-H14 alloy (Standard) or 5005-H34 alloy (For use with anodized finishes). Typical minimum thickness 20 Ga. (.032" / 0.8 mm)

Stainless Steel Sheet: Type 304 (Standard) or 316 (For higher degree of corrosion resistance). Minimum gauge 22 Ga. (.031" / 0.8 mm)

Galvanized Steel Sheet: Galvanneal Satin Coat, Typical minimum 24 Ga. (.028" / 0.7 mm)

Finishes

Aluminum: Baked polyester powder, or two or three coat fluoropolymer coatings by PPG® or Valspar®. Class I or II anodic finishes.

Stainless Steel: Satin brush # 4, Mirror # 8 or other readily available finishes for example, Non-Directional Brush or Random Swirl.

Galvanized Steel Sheet: Baked polyester powder.

Ourborite™ faux wood veneer finishes are available for most applications.

Dimensions

Metal Wall Panels are typically supplied up to 3'-6" wide by up to 8'-0".

Acoustics

Metal Walls are available both non-perforated (non-acoustic) and perforated (acoustic). Perforation patterns are limited only to the type of material and gauge chosen and available tooling. Presently Nelson offers more than fifty different perforation patterns ranging from diagonal (45-degree), staggered (60-degree) to straight as well as round, square and oblong holes. Our standard acoustical material consists of a Black pre-laminated fleece (SoundTex®) bonded to the concealed face of the wall panel plus a layer of minimum 1½" thick 1.5 lbs. density fiberglass insulation.

For more details and options contact your local Nelson Sales Representative or call our office at **1-800-277-6897**

Standard References

A. ASTM E84 - Standard Method of Test for Surface Burning Characteristics of Building Materials and Assemblies.

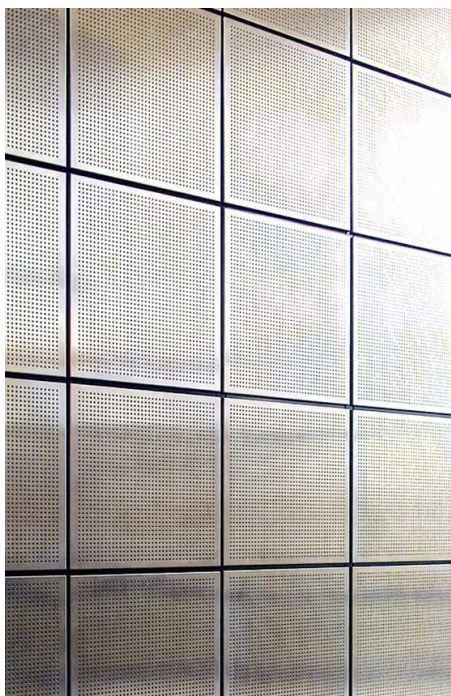
B. AAMA 605.2 - Specification for High Performance Finishes.

C. ASTM A 366/A 366M Standard Specification for Commercial Steel (CS) Sheet, Carbon (0.15 Maximum Percent) Cold-Rolled; 1997.

D. ASTM A 666 Standard Specification for Annealed or Cold-Worked Austenitic Stainless Steel Sheet, Strip, Plate, and Flat Bar; 2000.

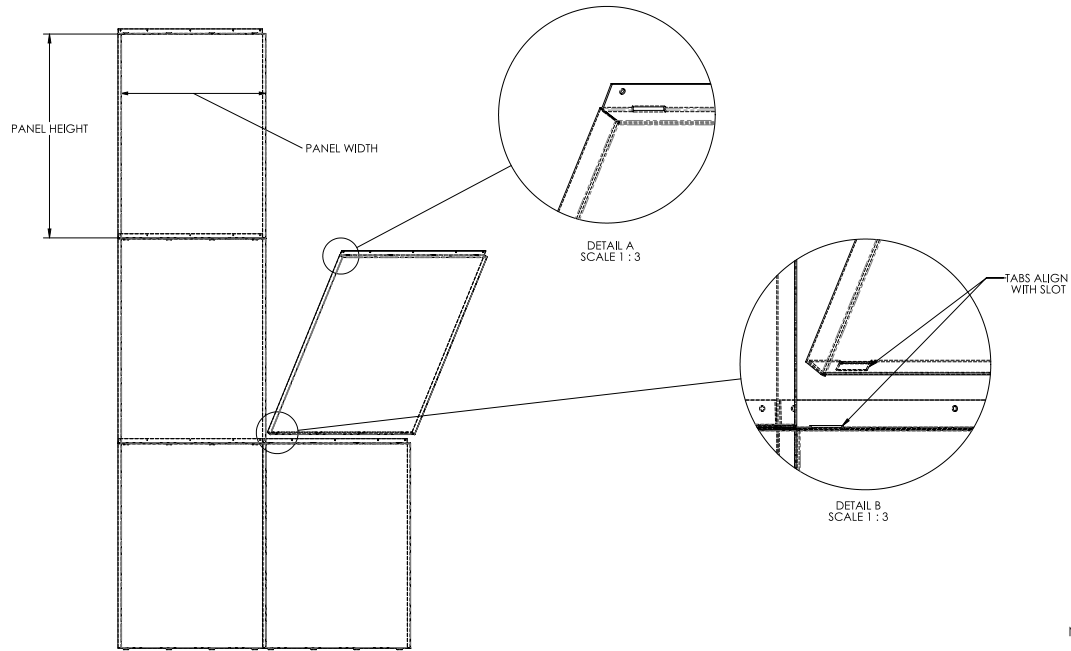
E. ASTM B36/B 36M Standard Specification for Brass Plate, Sheet, Strip, and Rolled Bar; 2006.

F. ASTM B 209/B 209M - Standard Specification for Aluminum and Aluminum-Alloy Sheet and Plate; 2004.

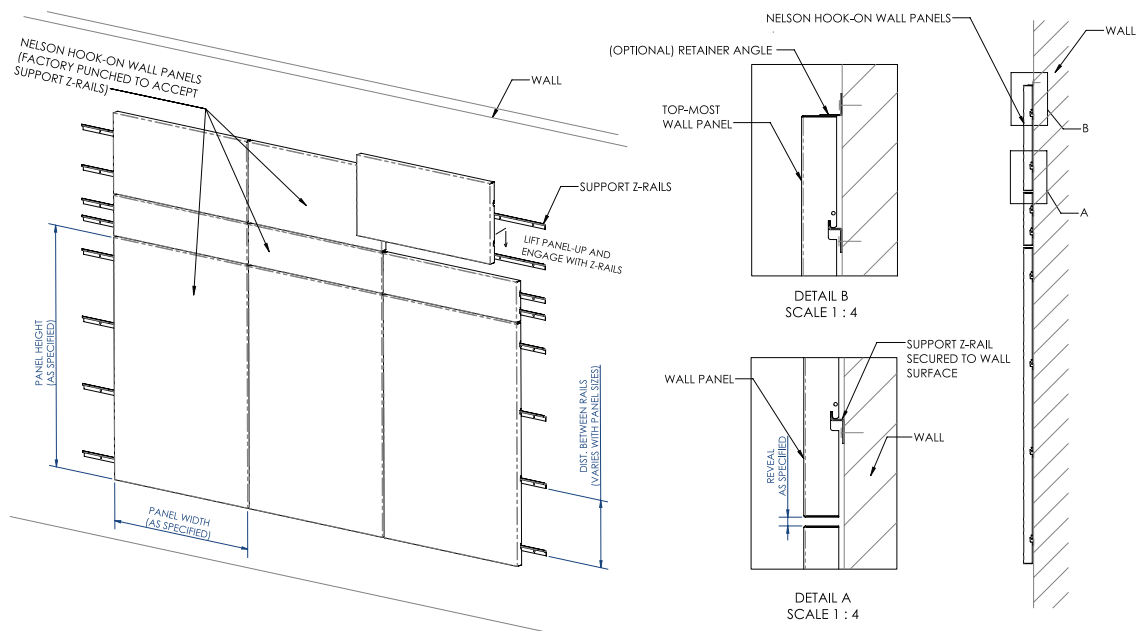


Nelson Industrial Inc. / Architectural Metals Division

905-428-2240 • www.nelsonamd.com • info@nelsonamd.com



NuvoWall-SO/TAS



NuvoWall-HO