

Product and Company Identification

Product Name: **MB Series**
 Manufacturer's Name: **Prospec Specialties Inc.**
 Suite 400, 3601, Highway 7,
 Markham ON, L3R 0M3, Canada
 Emergency #: (888) 749-8456
 Date Prepared: Nov., 2014

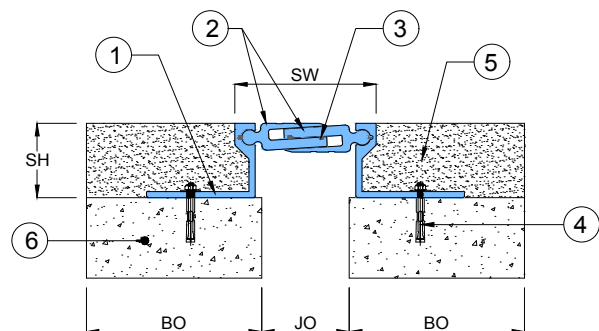
Table 1: System Details

Application	Code	JO	SH	SW	BO	± Movement (%)			Load (Ton)
		Millimeter				Horizontal	Vertical	Shear	
Straight (S)	MBS 01	25	38	41	75	15	15	Excellent	3.5
	MBS 02	51	38	71	75	15	15	Excellent	3.5
	MBS 03	76	38	96	75	20	20	Excellent	3.5
	MBS 04	102	38	122	75	20	20	Excellent	3.5
Corner (C)	MBC 01	25	38	41	90	15	15	Excellent	3.5
	MBC 02	51	38	71	90	15	15	Excellent	3.5
	MBC 03	76	38	96	90	20	20	Excellent	3.5
	MBC 04	102	38	122	90	20	20	Excellent	3.5

JO = Joint Opening **SH** = System Height **SW** = Sight Width **BO** (min.) = Blockout

Key to System Features (Straight Application)

1. Continuous Aluminum Recessed Mount Frame Grade 6063-T6, Anodized Finish
2. Continuous Aluminum Two Reversible Glide Plate Grade 6063-T6, Anodized Finish
3. Extruded Elastomeric Membrane
4. Concrete Sleeve Anchor (by others)
5. Backfill (by others)
6. Concrete Slab (by others)



Key to System Features (Corner Application)

1. Continuous Aluminum Recessed Mount Frame
Grade 6063-T6, Anodized Finish
2. Continuous Aluminum Two Reversible Glide
Plate Grade 6063-T6, Anodized Finish
3. Extruded Elastomeric Membrane
4. Continuous Aluminum Flush Wall Frame,
grade 6063-T6 Anodized Finish
5. Concrete Sleeve Anchor (by others)
6. Flat Head Countersunk Screw (by others)
7. Backfill (by others)
8. Concrete Slab (by others)
9. Concrete Wall (by others)

