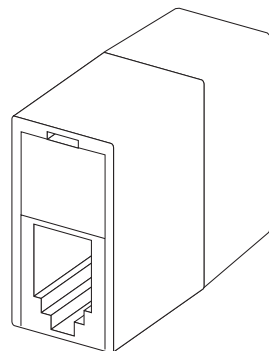
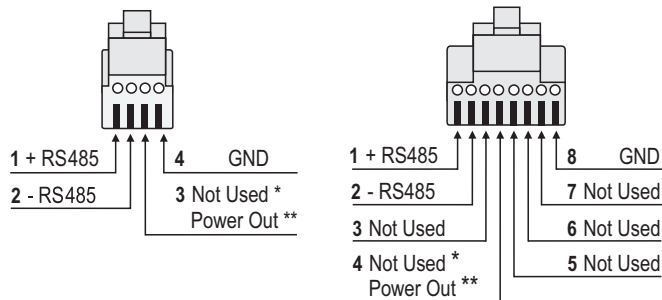
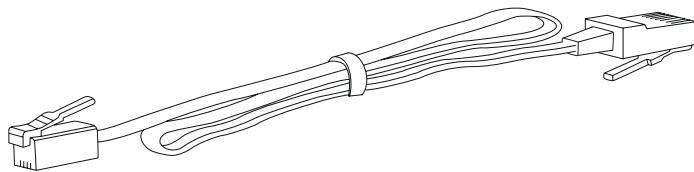


SDN Product Specifications



RJ9/RJ45 DATA CABLE

The data cable has a RJ9 end to plug into the motor and an RJ45 end to plug into a Somfy digital network component.

4 Conductor 26AWG modular cable with RJ9/RJ45 ends

DATA AND POWER OUTPUTS

PART NUMBER	CABLE LENGTHS
39-5529-25	2.5 ft. long
39-5529-08	8 ft. long
39-5529-12	12 ft. long
39-5529-24	24 ft. long

4 Conductor 26AWG modular cable with RJ9/RJ45 ends

DATA ONLY OUTPUTS

PART NUMBER	CABLE LENGTHS
39-5529-25	2.5 ft. long
39-5529-08	8 ft. long
39-5529-12	12 ft. long
39-5529-24	24 ft. long

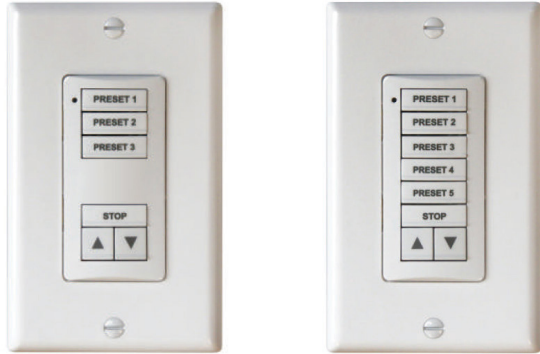
RJ45 DATA CABLE CONNECTOR

The RJ45 cable coupler is used to extend the motor or switch data cable by connecting a cat5 cable to one end.

SPECIFICATIONS	
Part Number	39-0093-00



SDN Product Specifications



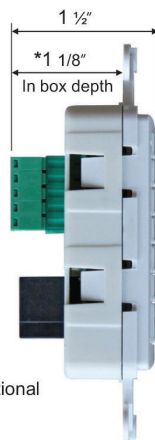
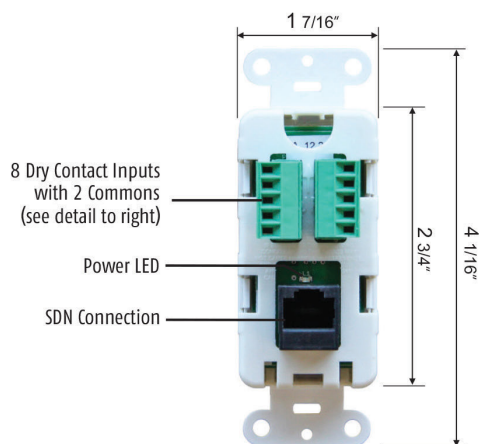
PROGRAMMABLE KEYPADS

The SDN keypad is a programmable control device which outputs the SDN protocol over RS-485, providing digital control of the Somfy Digital Network. The programmable keypad allows the SDN to function as a stand alone natural lighting control system and can be fully customized through the SDN smart switch configuration software. The programmable keypads are available in a 6-button or 8-button version that can be located anywhere on the SDN. Each keypad has a dry contact connection that can be used to operate motors programmed to the keypad.

PART NUMBER	CABLE LENGTHS
6 Button Keypad White	39-0090-01
6 Button Keypad Ivory	39-0090-10
6 Button Keypad Black	39-0090-39
8 Button Keypad	39-0091-01
8 Button Keypad	39-0091-10
8 Button Keypad	39-0091-39

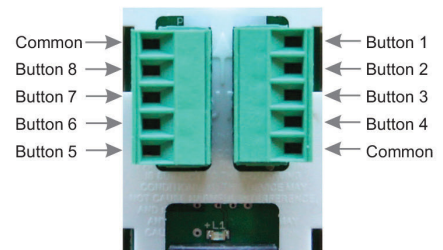
- Buttons are fully programmable
- Standard decorator style
- Mounts in a single gang box
- 8 dry contact inputs for system integration
- Available in white, ivory and black
- 5 Year Warranty

BACK OF SWITCH

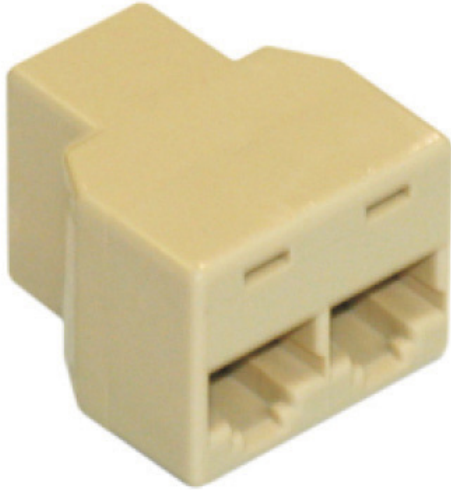


***NOTE:**
Always allow an additional 1" of depth for wiring connectors.

Detail of Inputs



SDN Product Specifications

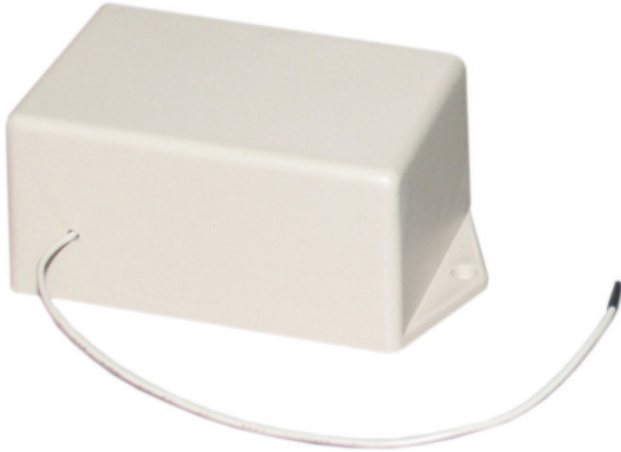


CAT-5 TEE

The CAT-5 Tee is a three way CAT-5 splitter which provides a junction point for communication devices on the Somfy Digital Network.

SPECIFICATIONS	
Part Number	39-5424-00
Size	1.3"L x 1.2"W x 0.93"H
Warranty	5 years

*Three female RJ45 connectors for network communication



RTS RECEIVER FOR SOMFY DIGITAL NETWORK

The RS485 RTS Receiver is a radio frequency device designed to connect directly to the Somfy Digital Network and is fully compatible with all RTS transmitters and interfaces. The RS485 RTS Receiver obtains its power directly from the RS485 bus line, therefore no external power supply is needed.

SPECIFICATIONS	
Part Number	39-5519-00
Radio Frequency	433.42 MHz
Size	3.85"L 2.1"W 1.5"H
Warranty	5 years

*Power: Obtained from SDN, red LED indicator

*Memory: Non-volatile flash memory stores up to 5 RTS channels even when power is not present

