



CUSTOM SIZES AVAILABLE!

Stockton Custom Fabrication

877-786-2587

custom@StocktonProducts.com

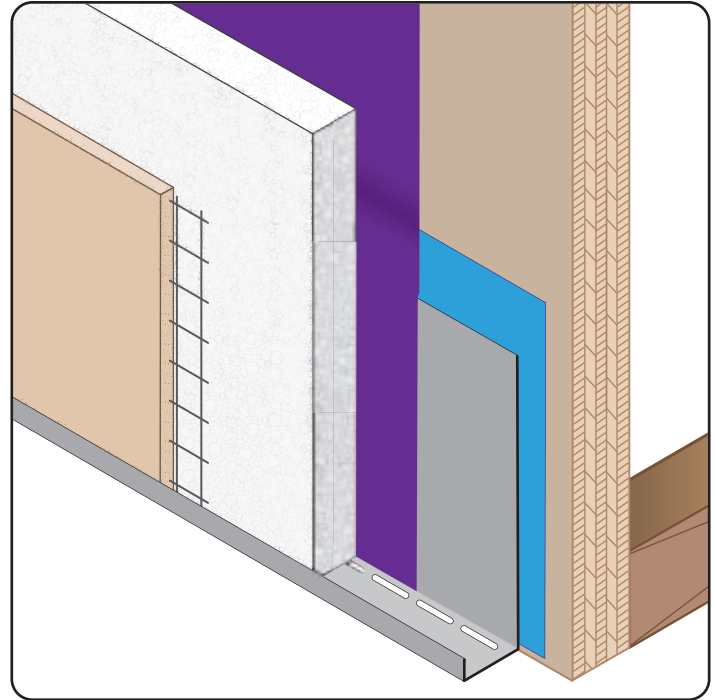
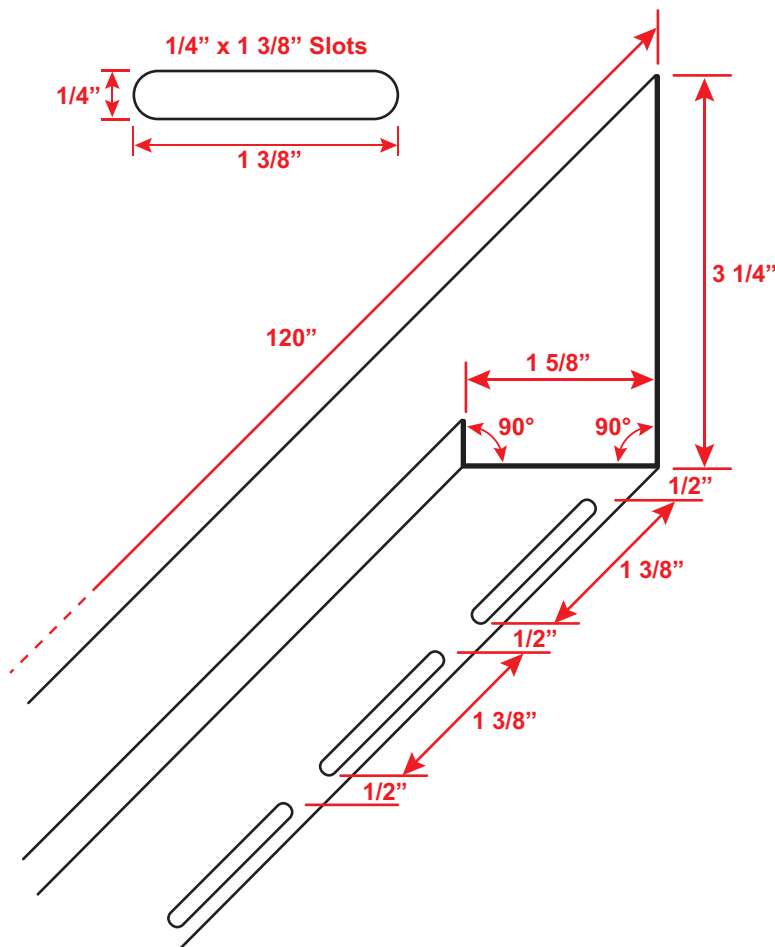
Stockton

PRODUCTS™

DWS: Slotted Weep Screed

- Custom Sizes Available, Contact Customer Service For Details
- Available in Aluminum (A), Copper (C), Galvanized Steel (GS), Bonderized (BN), Galvalume® (GVM), Stainless Steel (SS) or Zinc (Z)

The Slotted Weep Screed is a single piece weep screed specifically designed provide a route for moisture to escape. Weep slots are located along the back of the weep screed allow moisture to efficiently exit the stucco assembly.



Materials And Finishes:

Details: stpro.us/MET

Aluminum (A), Copper (C), Galvanized Steel (GS), Bonderized (BN), Galvalume® (GVM), Stainless Steel (SS) or Zinc (Z)

ASTM Codes:

Details: stpro.us/ASTM

All Accessories are fabricated from prime galvanized steel G90 zinc coating by the hot dipped method, conforming to steel and coating specification ASTM A-653/A-653M or zinc alloy meeting ASTM B-69. Stainless Steel A480/A480M A580M (Stainless Steel) For installation and placement instructions refer to ASTM C1063, C841 and C926.

Most Common Part Numbers:

DWS1585314 038 DWS: Slotted Weep Screed

QUOTE

Company: _____
Name: _____
Address: _____
City: _____
State/ZIP: _____
Phone: _____
eMail: _____

QTY: _____

PO Number: _____

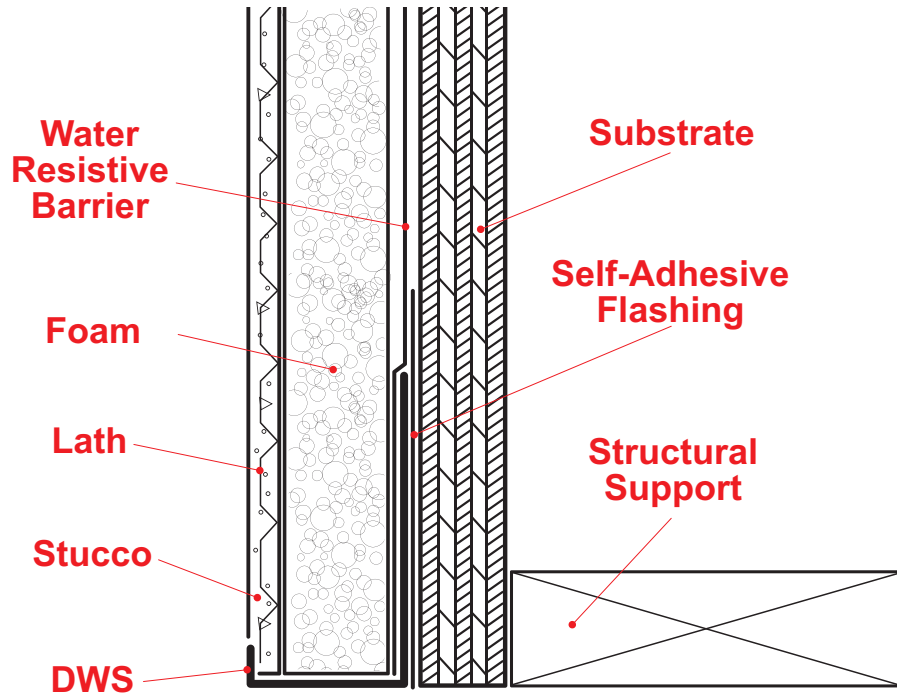
Job/Project: _____

Notes: _____

877-786-2587 • StocktonProducts.com



DWS: Slotted Weep Screed



The Slotted Weep Screed is a single piece weep screed specifically designed provide a route for moisture to escape. Weep slots are located along the back of the weep screed allow moisture to efficiently exit the stucco assembly.

Note: This drawing is supplied solely to assist in the selection and application of product manufactured by Stockton Products. This drawing is generic in nature and should not be used in design or construction without an independent evaluation by a qualified Architect or Engineer of Record.