



**CUSTOM SIZES AVAILABLE!**

Stockton Custom Fabrication

877-786-2587

custom@StocktonProducts.com



## ECX: End Cap With Tapeable Flange

- Custom Sizes Available, Contact Customer Service For Details
- Optional Key Holes in Tape Flange
- Available Anodized, PaintLoc (PTL) or Jet Kote (JTC) Finished
- Available in Aluminum (A)

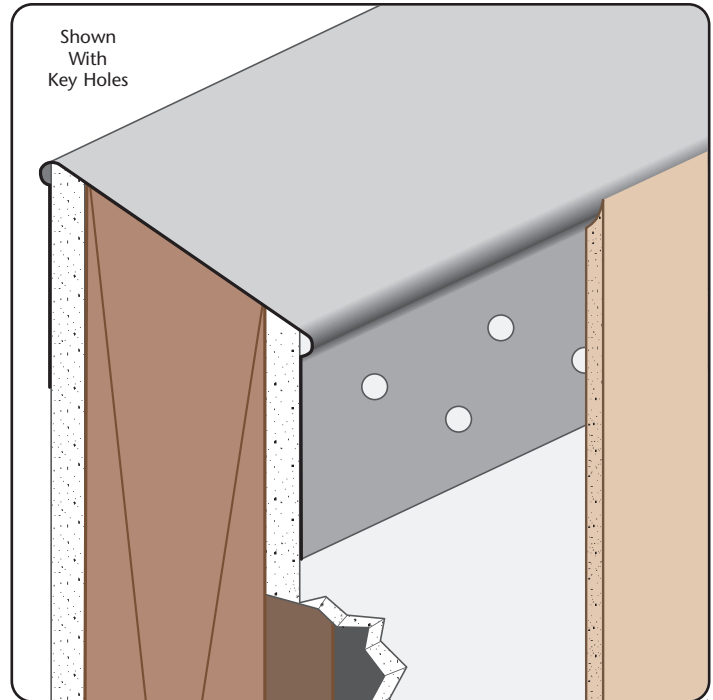
Used as an end cap to finish off partition walls. Standard length is 10 foot. The ECX End Cap has optional holes in the taping flange for keying the drywall mud.

### Most Common Sizes

**X Sizes:** 3 3/4", 3 7/8", 4 7/8", 5 1/4" or 7 1/4"

**Y Sizes:** 1 1/4"

**Length:** 120" or 144"



### Materials And Finishes:

Details: [stpro.us/MET](http://stpro.us/MET)

Aluminum (A)

### ASTM Codes:

Details: [stpro.us/ASTM](http://stpro.us/ASTM)

A1003, A653, A924, C645, C754, C955

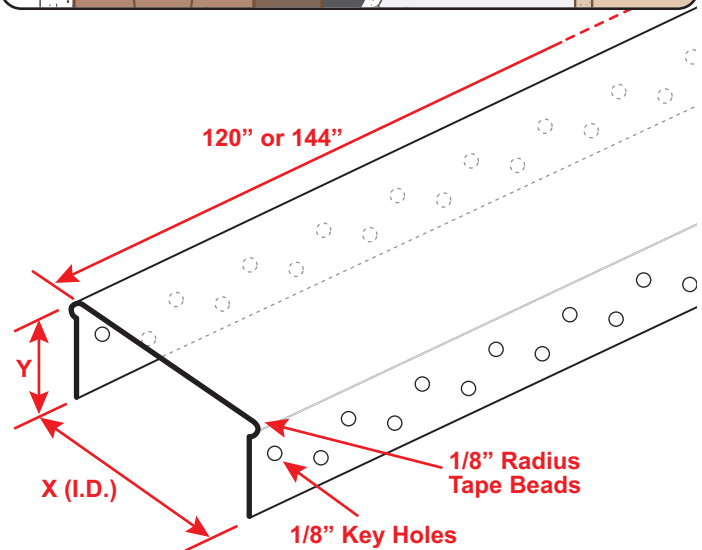
### Most Common Part Numbers:

**ECX3750JTC** ECX: X=3 3/4, A, 10', JTC

**ECX3875JTC** ECX: X=3 7/8, A, 10', JTC

**ECX4875JTC** ECX: X=4 7/8, A, 10', JTC

**ECX725JTC** ECX: X=7 1/4, A, 10', JTC



**QUOTE**

Company: \_\_\_\_\_  
Name: \_\_\_\_\_  
Address: \_\_\_\_\_  
City: \_\_\_\_\_  
State/ZIP: \_\_\_\_\_  
Phone: \_\_\_\_\_  
eMail: \_\_\_\_\_

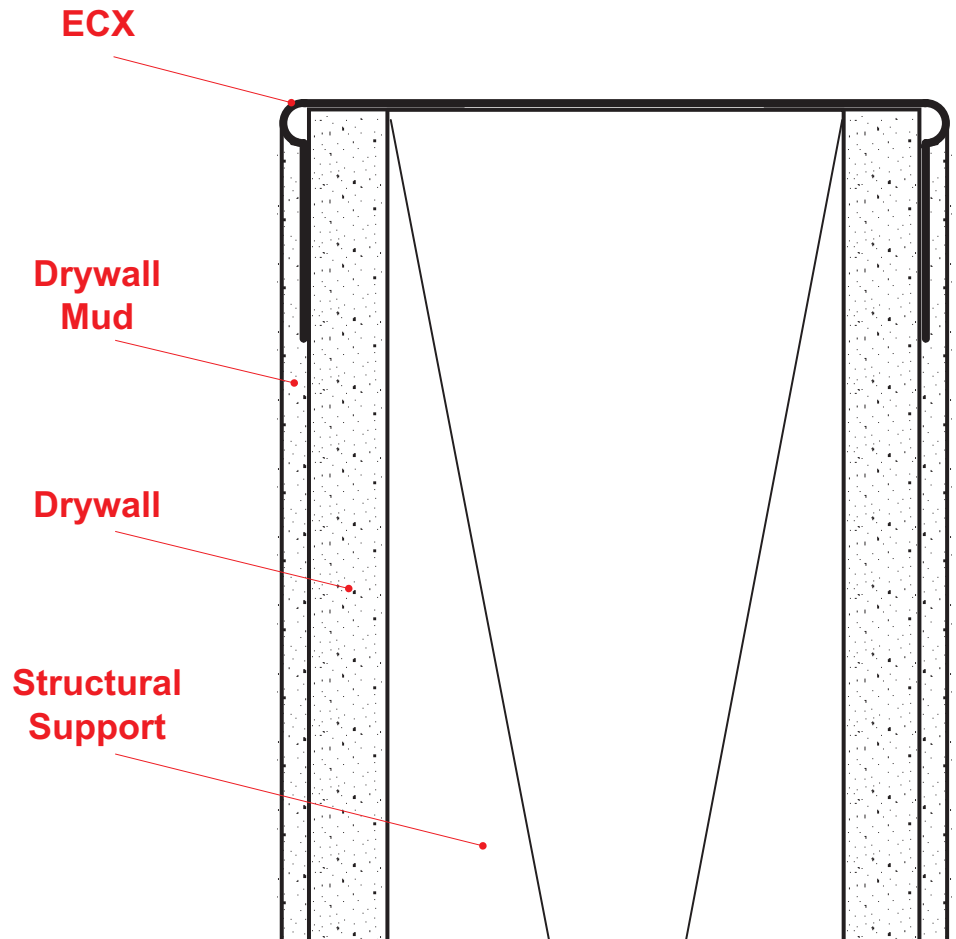
QTY: \_\_\_\_\_  
Material/Gauge: \_\_\_\_\_  
X Size: \_\_\_\_\_  
Y Size: \_\_\_\_\_  
Length: \_\_\_\_\_  
Key Holes: ☐ None ☐ 1/8"

PO Number: \_\_\_\_\_  
Job/Project: \_\_\_\_\_  
Notes: \_\_\_\_\_  
\_\_\_\_\_  
\_\_\_\_\_

**877-786-2587 • StocktonProducts.com**



## ECX: End Cap With Tapeable Flange



Used as an end cap to finish off partition walls. Standard length is 10 foot. The ECX End Cap has optional holes in the taping flange for keying the drywall mud.

**Note:** This drawing is supplied solely to assist in the selection and application of product manufactured by Stockton Products. This drawing is generic in nature and should not be used in design or construction without an independent evaluation by a qualified Architect or Engineer of Record.

©2023 Stockton Products. All rights reserved worldwide. Product illustrations are for reference only. Rev 052623

CALIFORNIA RESIDENTS: Please review our Prop 65 statement at [stpro.us/P65](http://stpro.us/P65) or visit [www.P65Warnings.ca.gov](http://www.P65Warnings.ca.gov)