



**CUSTOM SIZES AVAILABLE!**

Stockton Custom Fabrication

877-786-2587

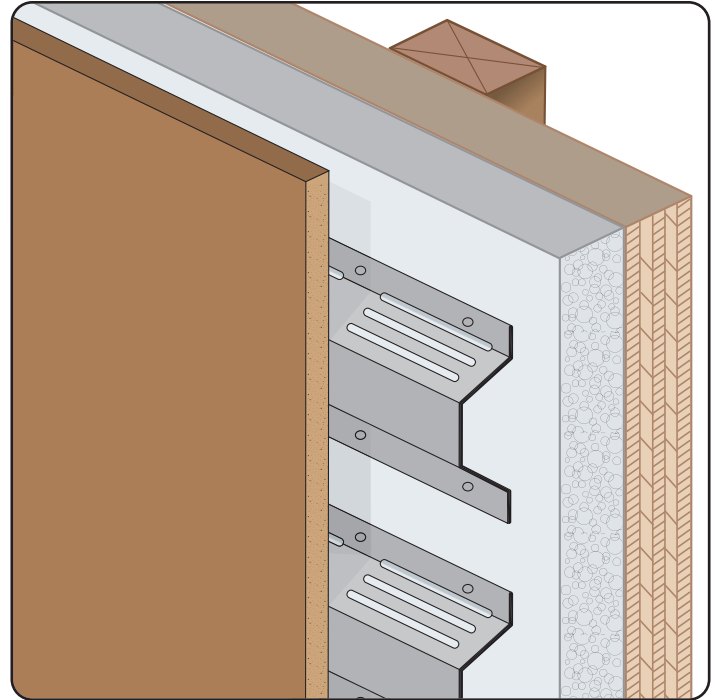
custom@StocktonProducts.com



# HCV: Vented Hat Channel

- Custom Sizes Available, Contact Customer Service For Details
- Available in Aluminum (A), Copper (C), Galvanized Steel (GS), Bonderized (BN), Galvalume® (GVM), Stainless Steel (SS) or Zinc (Z)

The Vented Hat Channel is designed to provide spacing between insulation and the exterior cladding. This space allows for both ventilation and moisture drainage.



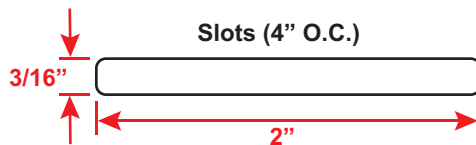
## Most Common Sizes

**X Sizes:** User Defined

**Y Sizes:** User Defined

**Z Sizes:** User Defined

**Length:** 120" or 144"



**NEW**

## Materials And Finishes:

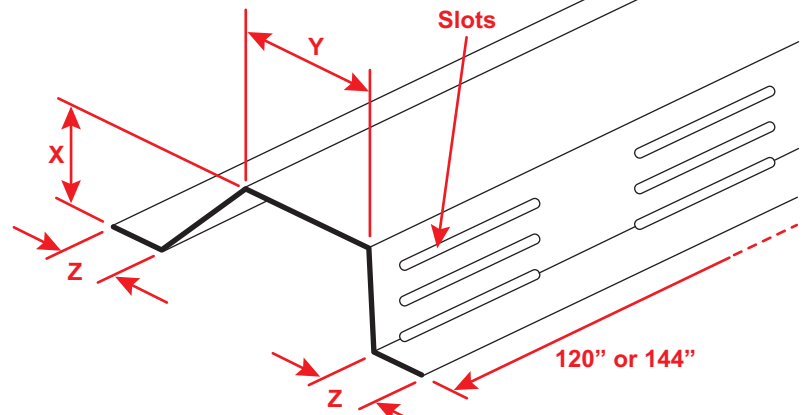
Details: [stpro.us/MET](http://stpro.us/MET)

Aluminum (A), Copper (C), Galvanized Steel (GS), Bonderized (BN), Galvalume® (GVM), Stainless Steel (SS) or Zinc (Z)

## ASTM Codes:

Details: [stpro.us/ASTM](http://stpro.us/ASTM)

A1003, A653, A924, C645, C754, C955



**QUOTE**

Company: \_\_\_\_\_  
Name: \_\_\_\_\_  
Address: \_\_\_\_\_  
City: \_\_\_\_\_  
State/ZIP: \_\_\_\_\_  
Phone: \_\_\_\_\_  
eMail: \_\_\_\_\_

QTY: \_\_\_\_\_  
Material/Gauge: \_\_\_\_\_  
X Size: \_\_\_\_\_  
Y Size: \_\_\_\_\_  
Z Size: \_\_\_\_\_  
Length: \_\_\_\_\_

PO Number: \_\_\_\_\_  
Job/Project: \_\_\_\_\_  
Notes: \_\_\_\_\_  
\_\_\_\_\_  
\_\_\_\_\_  
\_\_\_\_\_

**877-786-2587 • StocktonProducts.com**

