



CUSTOM SIZES AVAILABLE!

Stockton Custom Fabrication
(877) 786-2587
custom@stocktonproducts.com



MFR: Finish-Rite® M-Slide Expansion Joint® - 2 Piece

- Custom Sizes Available, Contact Customer Service For Details
- SUPERIOR® Moisture Protection
- Available With 1/4" or 1/2" Weep Holes or No Holes
- Available in Aluminum (A), Copper (C), Galvanized Steel (GS), Bonderized (BN), Galvalume® (GVM), Stainless Steel (SS) or Zinc (Z)

The dual function self-aligning expansion joint provides movement capability at floor line while allowing moisture to release from the top ground and lock out moisture from the bottom. Special "Step" on the attachment leg provides a locator for correct placement of the fasteners and helps keep the molding laying flat on the wall. Provides 1" of vertical movement.

US Patent 7,673,421 B2

Most Common Sizes

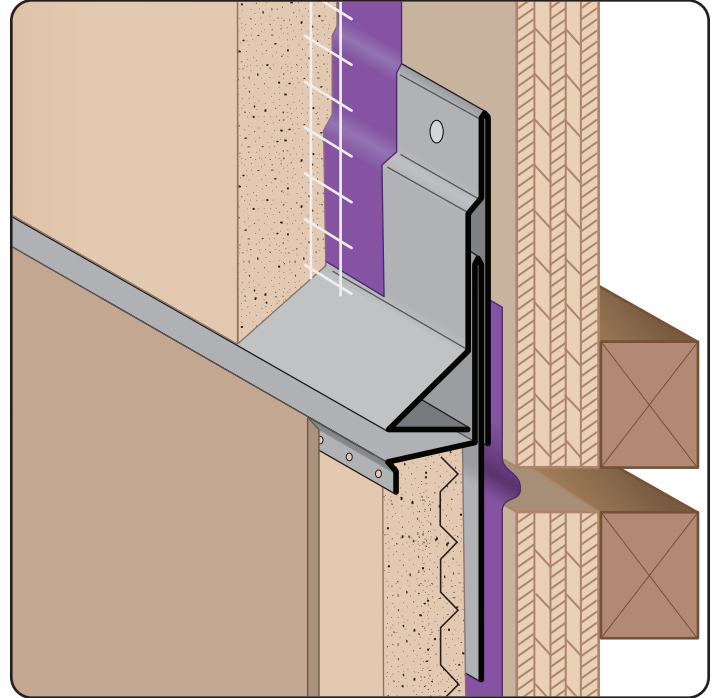
W Sizes: 1/8" or 3/16"

X Sizes: 5/8", 3/4", 7/8", 1 3/8" or 1 1/2"

Y Sizes: 2 1/2", 3" or 3 1/2"

Z Sizes: 2 1/2", 3" or 3 1/2"

Length: 120"



SUPERIOR
Moisture
Protection



Materials And Finishes:

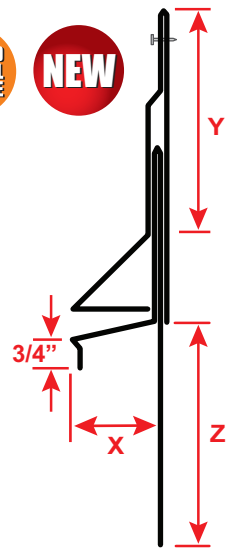
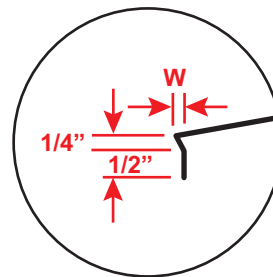
Details: stpro.us/MET

Aluminum (A), Copper (C), Galvanized Steel (GS), Bonderized (BN), Galvalume® (GVM), Stainless Steel (SS) or Zinc (Z)

ASTM Codes:

Details: stpro.us/ASTM

All Accessories are fabricated from prime galvanized steel G90 zinc coating by the hot dipped method, conforming to steel and coating specification ASTM A-653/A-653M or zinc alloy meeting ASTM B-69. Stainless Steel A480/A480M A580M (Stainless Steel) For installation and placement instructions refer to ASTM C1063, C841 and C926.



QUOTE

Company: _____
Name: _____
Address: _____
City: _____
State/ZIP: _____
Phone: _____
eMail: _____

QTY: _____
Material/Gauge: _____
W Size: _____
X Size: _____
Y Size: _____
Z Size: _____
Length: _____

Weep Holes: ☐ None ☐ 1/4" ☐ 1/2"
PO Number: _____
Job/Project: _____
Notes: _____

877-786-2587 • StocktonProducts.com

