



CUSTOM SIZES AVAILABLE!

Stockton Custom Fabrication

877-786-2587

custom@StocktonProducts.com



TFB: TruFlush™ Backing

- Faster Installation
- Eliminates Costly Backcharges
- Increase Production Installation, Plus Drywall, Taping And Finishing
- Increased Safety, No Grinders Needed, Only Chop Saw And Screw Gun
- Galvanized Steel (GS)
- Fixed Length, Single Piece Design
- Patent Pending

Low profile, return lip backing that provides increased load capacity. TruFlush™ Backing will eliminate build up, drywall cracking and drywall fastener popping. Available in 20 gauge or 16 gauge for 12", 16" and 24" stud spacing.

Note: Custom spacing and steel thickness available with extended lead times.

Most Common Sizes

W Sizes: 12", 16" and 24"

See Installation Guide For Load Testing Data

STUD	STUD PROFILE:	
	X: _____	
	Y: _____	
	Z: _____	
	Gauge: _____	

Materials And Finishes:

Details: stpro.us/MET

Galvanized Steel (GS) in 20 ga. or 16 ga. G60 standard (G90 optional)

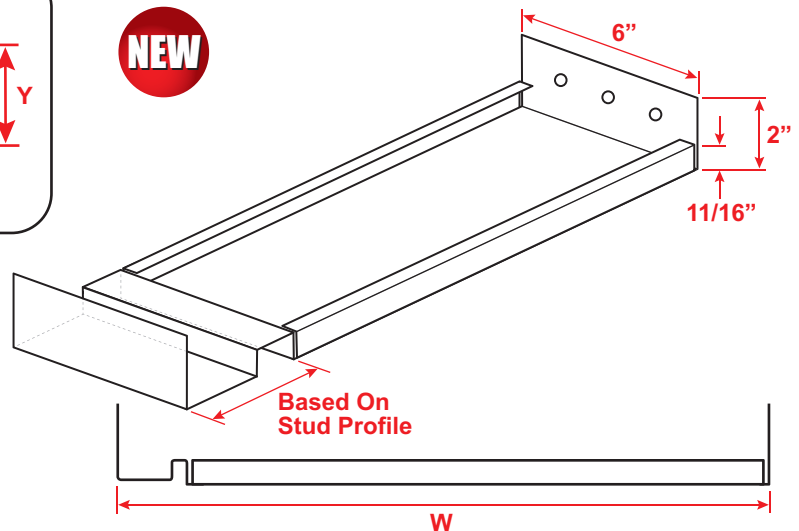
ASTM Codes:

Details: stpro.us/ASTM

A1003, A653, A924, C645, C754, C955



NEW



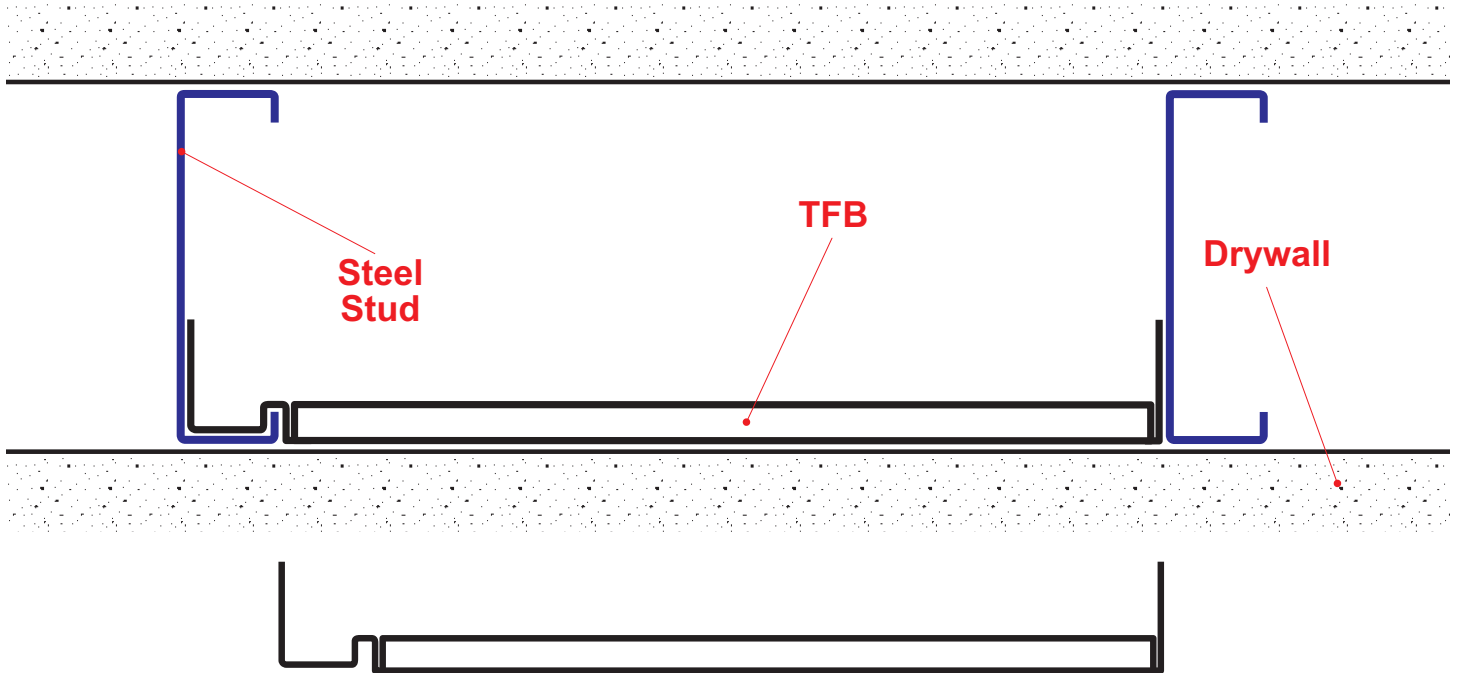
QUOTE	Company: _____	QTY: _____	PO Number: _____
	Name: _____	Material/Gauge: _____	Job/Project: _____
	Address: _____	W Size: _____	Notes: _____
	City: _____		_____
	State/ZIP: _____		_____
	Phone: _____		_____
	eMail: _____		_____

877-786-2587 • StocktonProducts.com



TFB: TruFlush™ Backing

Patent Pending



Low profile, return lip backing that provides increased load capacity. TruFlush™ Backing will eliminate build up, drywall cracking and drywall fastener popping. Available in 20 gauge or 16 gauge for 12", 16" and 24" stud spacing.

Load Testing Data

The allowable span lengths for the nonstructural steel stud assemblies are based on the limiting span calculated wall at flexural strength, and end reaction strength. Based on the tabular information for both the Fixed and Adjustable TruFlush™ Backing the allowable spans as managed in comparison to common stud spacings of 12", 16", and 24" can be used with in conjunction with all typical stud gauge applications.

16 Gauge Fixed Configuration - Allowable Spans

DP (psf)	Span lengths (in) Based On Strength Vertical Spacing of TruFlush™ Backing			
	16	24	32	48
5	106.9	87.3	75.6	61.7
10	75.6	61.7	53.4	43.6
15	61.7	50.4	43.6	35.6
30	43.6	35.6	30.8	25.2
40	37.8	30.8	26.7	21.8
50	33.8	27.6	23.9	19.5
60	30.8	25.2	21.8	17.8

20 Gauge Fixed Configuration - Allowable Spans

DP (psf)	Span lengths (in) Based On Strength Vertical Spacing of TruFlush™ Backing			
	16	24	32	48
5	75.2	61.4	53.2	43.4
10	53.2	43.4	37.6	30.7
15	43.4	35.5	30.7	25.1
30	30.7	25.1	21.7	17.7
40	26.6	21.7	18.8	15.4
50	23.8	19.4	16.8	13.7
60	21.7	17.7	15.4	12.5

Note: This drawing is supplied solely to assist in the selection and application of product manufactured by Stockton Products. This drawing is generic in nature and should not be used in design or construction without an independent evaluation by a qualified Architect or Engineer of Record.