

## TWMW: Tru-Weep™ Midwall Vent

- Custom Sizes Available, Contact Customer Service For Details
- Included 3/16 x 2" Weep Slots
- Available in Aluminum (A), Copper (C), Galvanized Steel (GS), Bonderized (BN), Galvalume® (GVM), Stainless Steel (SS) or Zinc (Z)
- Patent Pending

The Tru-Weep™ Midwall Vent is a two piece horizontal control joint specifically designed to be used with drainage mat. This unique design allows for the top of the wall to drain moisture, and the bottom of the wall to vent air at the same midwall reveal. Weep slots are located along the back of the sloped legs in alignment with the drainage mats to allow water and air to efficiently exit the stucco assembly.

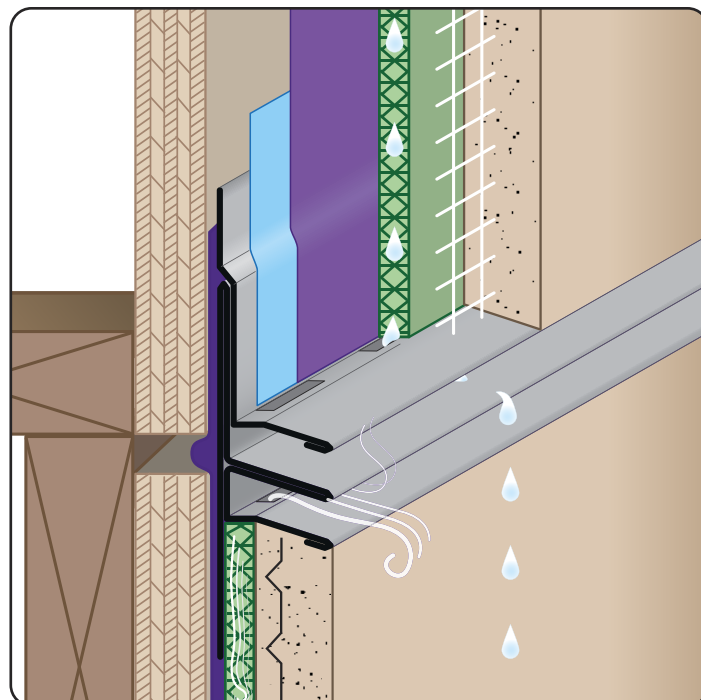
### Most Common Sizes

**X Sizes:** User Defined

**Y Sizes:** User Defined

**Z Sizes:** User Defined

**Length:** 120"



### Materials And Finishes:

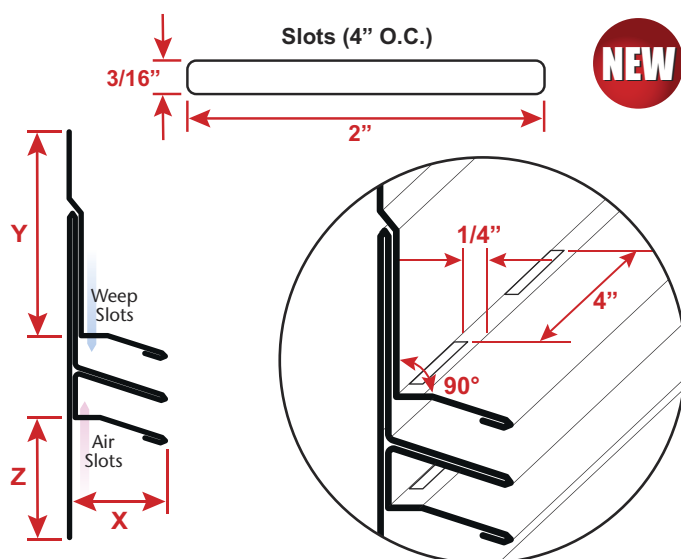
Details: [stpro.us/MET](http://stpro.us/MET)

Aluminum (A), Copper (C), Galvanized Steel (GS), Bonderized (BN), Stainless Steel (SS) or Zinc (Z)

### ASTM Codes:

Details: [stpro.us/ASTM](http://stpro.us/ASTM)

All Accessories are fabricated from prime galvanized steel G90 zinc coating by the hot dipped method, conforming to steel and coating specification ASTM A-653/A-653M or zinc alloy meeting ASTM B-69. Stainless Steel A480/A480M A580M (Stainless Steel) For installation and placement instructions refer to ASTM C1063, C841 and C926.



**QUOTE**

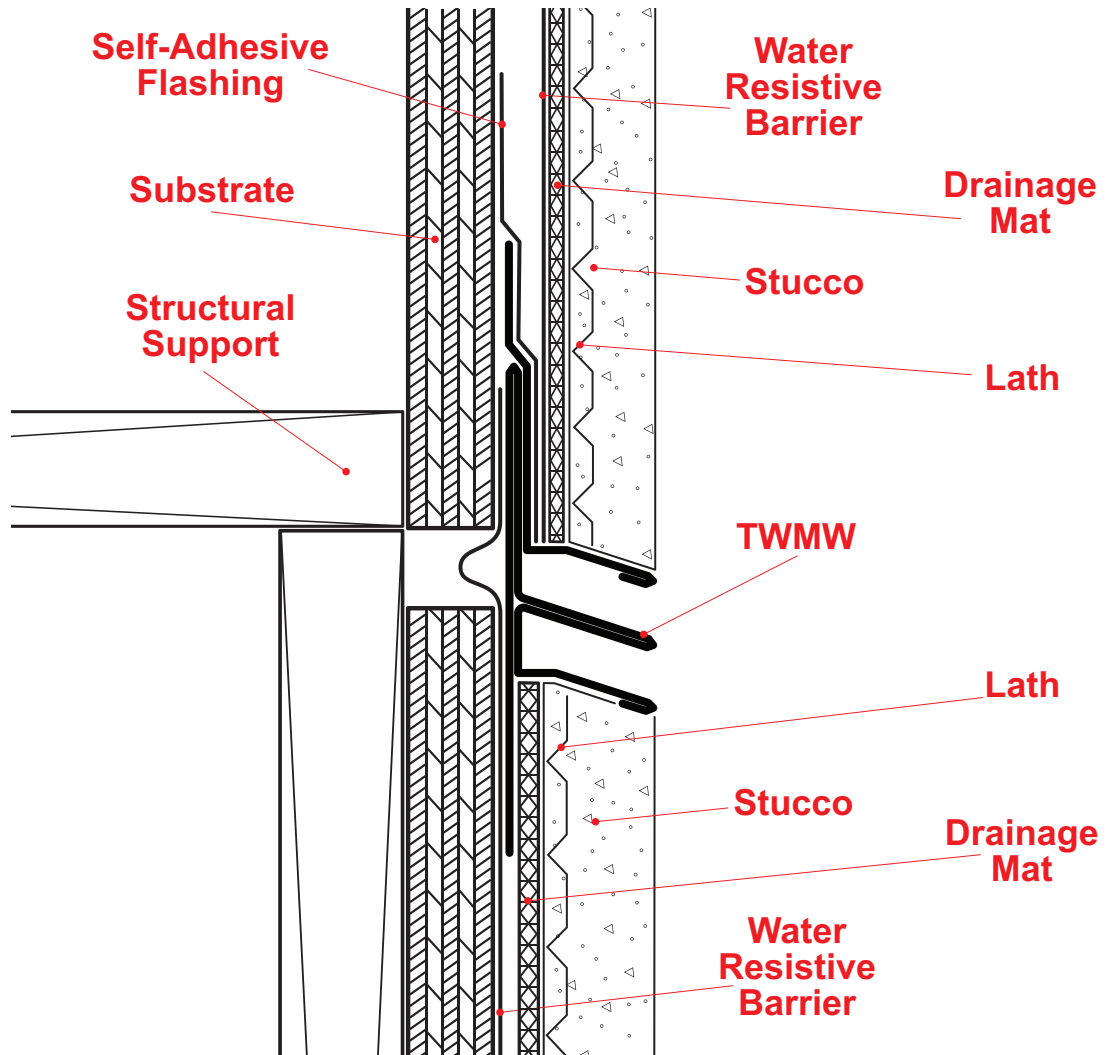
Company: \_\_\_\_\_  
Name: \_\_\_\_\_  
Address: \_\_\_\_\_  
City: \_\_\_\_\_  
State/ZIP: \_\_\_\_\_  
Phone: \_\_\_\_\_  
eMail: \_\_\_\_\_

QTY: \_\_\_\_\_  
Material/Gauge: \_\_\_\_\_  
X Size: \_\_\_\_\_  
Y Size: \_\_\_\_\_  
Z Size: \_\_\_\_\_  
Length: \_\_\_\_\_

PO Number: \_\_\_\_\_  
Job/Project: \_\_\_\_\_  
Notes: \_\_\_\_\_  
\_\_\_\_\_  
\_\_\_\_\_  
\_\_\_\_\_

**877-786-2587 • StocktonProducts.com**

## TWMW: Tru-Weep™ Midwall Vent



The Tru-Weep™ Midwall Vent is a two piece horizontal control joint specifically designed to be used with drainage mat. This unique design allows for the top of the wall to drain moisture, and the bottom of the wall to vent air at the same midwall reveal. Weep slots are located along the back of the sloped legs in alignment with the drainage mats to allow water and air to efficiently exit the stucco assembly.

**Note:** This drawing is supplied solely to assist in the selection and application of product manufactured by Stockton Products. This drawing is generic in nature and should not be used in design or construction without an independent evaluation by a qualified Architect or Engineer of Record.

©2021 Stockton Products. All rights reserved worldwide. Product illustrations are for reference only. Rev 111622

CALIFORNIA RESIDENTS: Please review our Prop 65 statement at [stpro.us/P65](http://stpro.us/P65) or visit [www.P65Warnings.ca.gov](http://www.P65Warnings.ca.gov)