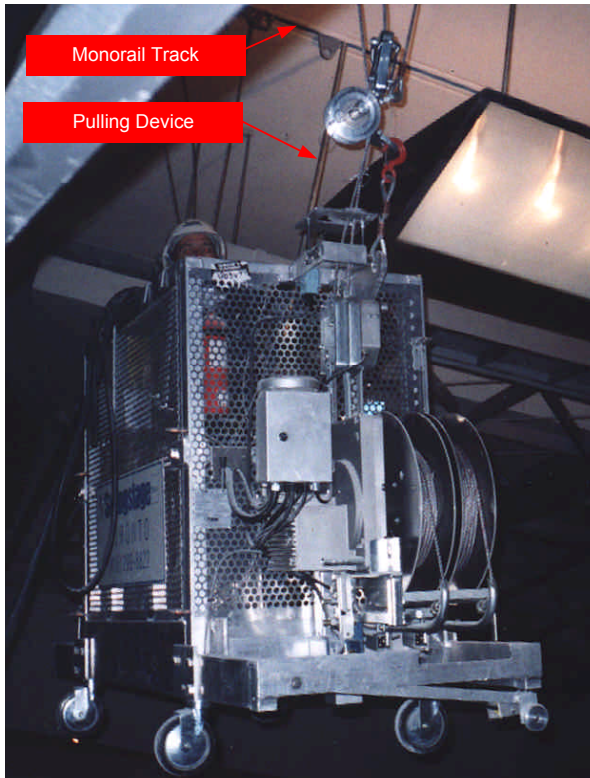


product information

access references TRACMOD POWERED PLATFORMS

ref.: M 4767
rev. no.:
date: 10/98
page: 1/1



Application: TRACMOD Powered Platform & Interior Monorail

Site: Ronald Reagan Building & International Trade Center – Auditorium Interior

Federal Triangle
1300 Pennsylvania Avenue
Washington, D.C. - ref.: 9925

Customer: A.J. Contracting Inc.

Equipment: 120 ft. (37m) – Inclined monorail track
2 – Friction drive trolleys & pulling device
1 – 6.5 ft. (2 m) TRACMOD powered platform

Technical Data:

TRACMOD powered platform:

Maximum suspension height:	100 ft. (30 m)
Suspension type:	dual-line
Hoist type:	TIRAK XE500P, traction
Platform load capacity:	500 lbs. (225 kg)
Working speed:	30 ft./min. (9 m/min.)
Number of operators required:	2
Traversing system:	manual

Monorail track:

Track type:	'C' channel, straight
Track mounting:	bolted, flush to ceiling
Track load capacity:	700 lbs. (315 kg)
Track support:	spreader bar across 3 beams
Trolleys:	friction type for inclined track

Description of the application:

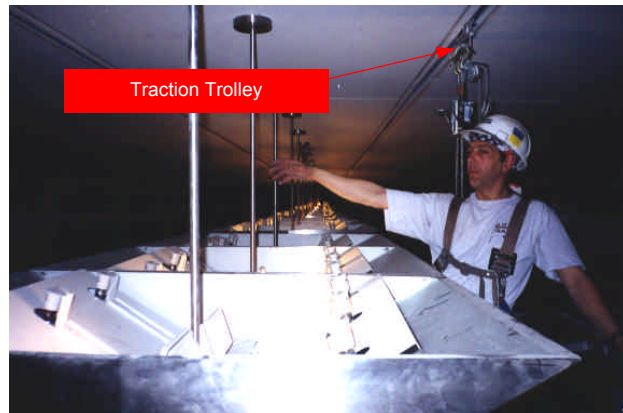
The new Federal Triangle, owned by the U.S. Government Services Authority, was designed by architects Pei, Cobb, Fred & Partners.

The Ronald Reagan Building Auditorium houses a theater that required maintenance access to lighting suspended from an inclined ceiling.

Tractel Ltd. supplied monorail track along both sides of the fixtures, mounted flush to the ceiling. The load of the system required that the monorail be supported from three structural members above the ceiling level.

The TRACMOD powered platform is ground rigged from special friction trolleys designed to be stable along the slightly inclined monorail.

When not in use, the platform is de-rigged and stored out of sight.



Tractel provided many different access systems on this project, including a SENIOR Roofcar and special Rolling Ladders (see Product Information sheets M-4780 & M-4781).