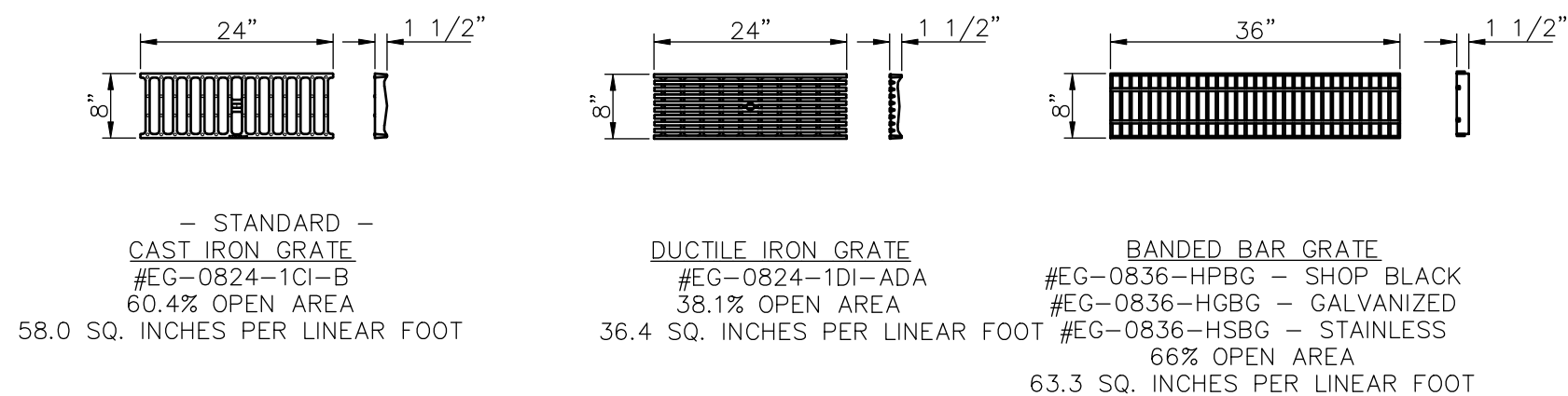
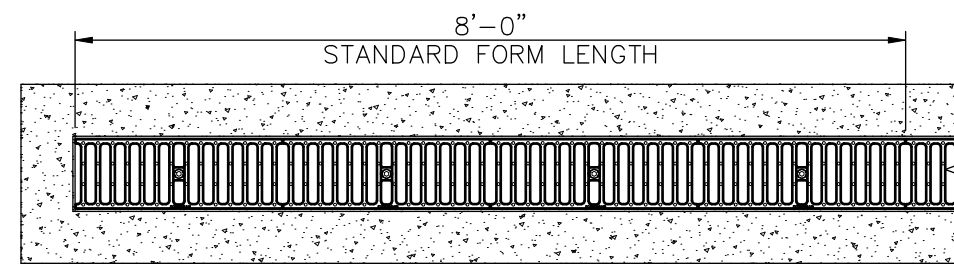


EconoDrain? Series #6
STANDARD EPS FORMS



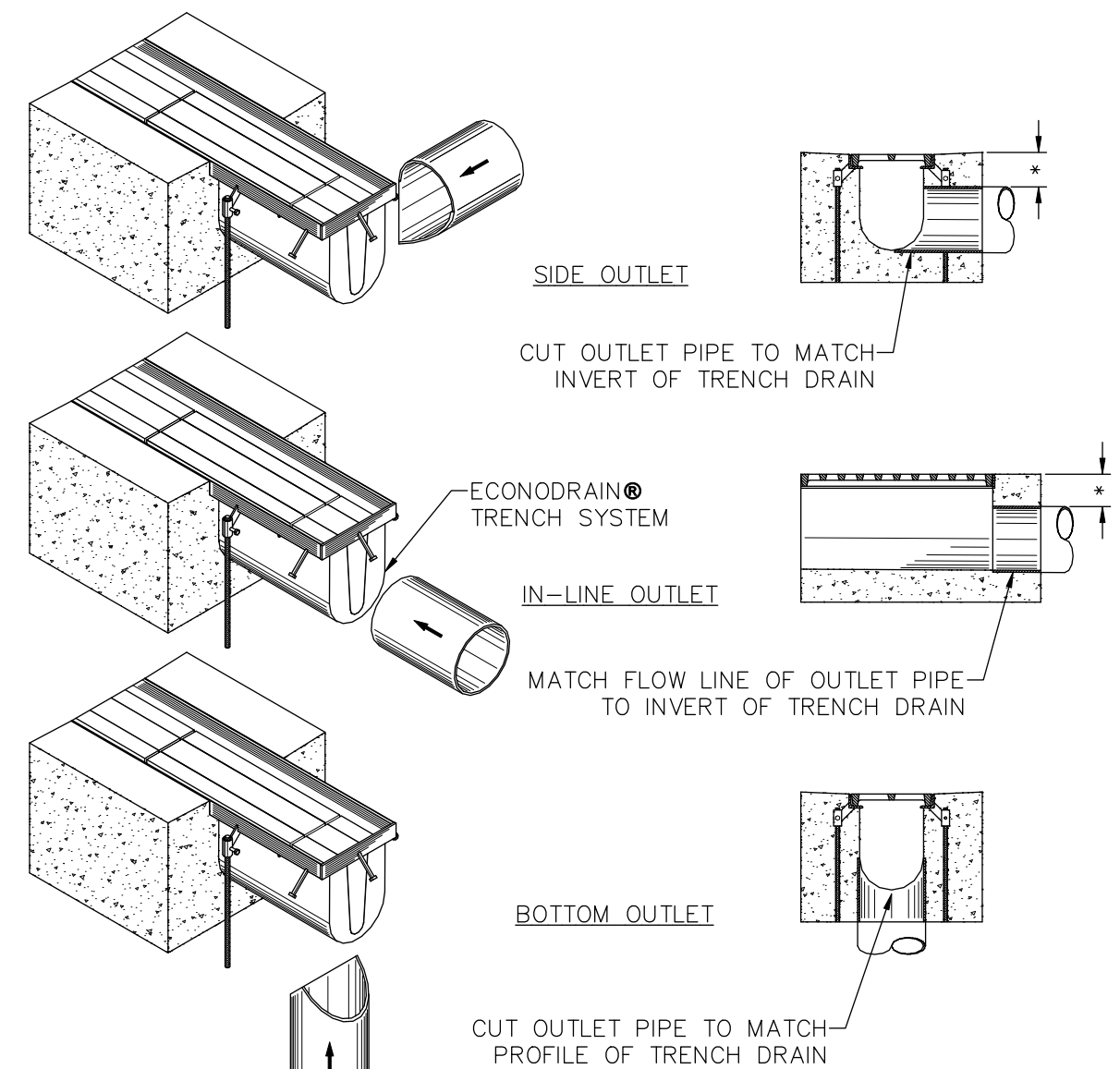
EconoDrain? Series #6
GRATE SELECTION



EconoDrain? Series #6
FINISHED PLAN VIEW

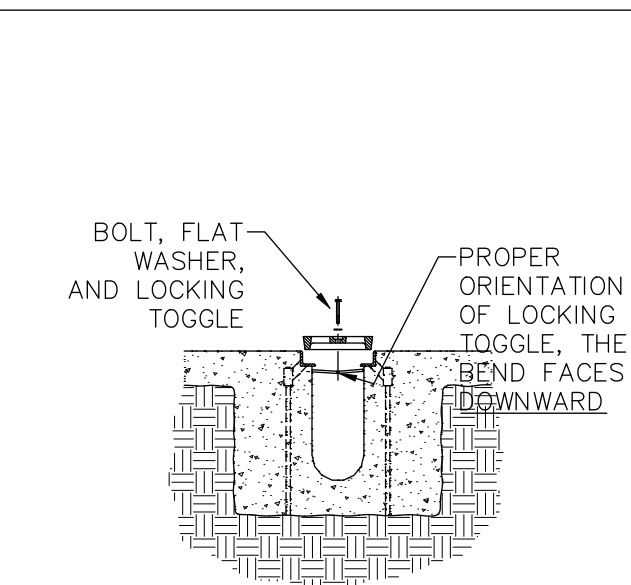
EPS FORM	DEPTH		FLOW GPM
	MIN	MAX	
06	6"	6 1/2"	200
07	6 1/2"	7"	228
08	7"	7 1/2"	257
09	7 1/2"	8"	286
10	8"	8 1/2"	315
11	8 1/2"	9"	345
12	9"	9 1/2"	374
13	9 1/2"	10"	404
14	10"	10 1/2"	433
15	10 1/2"	11"	463
16	11"	11 1/2"	493
17	11 1/2"	12"	523
18	12"	12 1/2"	553
19	12 1/2"	13"	583
20	13"	13 1/2"	613
21	13 1/2"	14"	643
22	14"	14 1/2"	673
23	14 1/2"	15"	704
24	15"	15 1/2"	734
25	15 1/2"	16"	764
26	16"	16 1/2"	794
27	16 1/2"	17"	824
28	17"	17 1/2"	855
29	17 1/2"	18"	885
30	18"	18 1/2"	915
31	18 1/2"	19"	946
32	19"	19 1/2"	976
33	19 1/2"	20"	1006
34	20"	20 1/2"	1037
35	20 1/2"	21"	1067
36	21"	21 1/2"	1098
37	21 1/2"	22"	1128
38	22"	22 1/2"	1158
39	22 1/2"	23"	1189
40	23"	23 1/2"	1219
41	23 1/2"	24"	1250
42	24"	24 1/2"	1280
43	24 1/2"	25"	1311
44	25"	25 1/2"	1341
45	25 1/2"	26"	1372

EPS FORM CHART

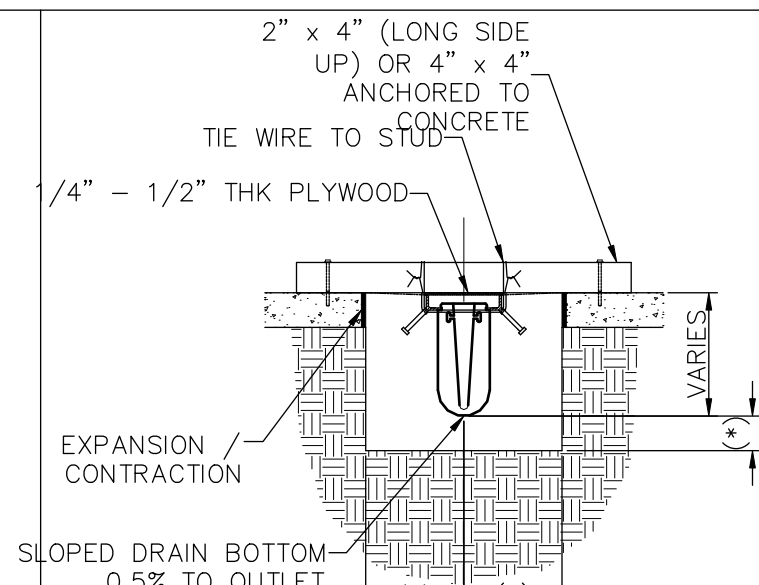


EconoDrain? Series #6
OUTLETS FROM END OF TRENCH
NOT TO SCALE

- NOTES TO THE SPECIFIER:
1. ADD REBAR AS REQUIRED.
 2. SPECIFY MINIMUM CONCRETE ENCASEMENT.
 3. 4" MINIMUM CONCRETE COVERAGE OF OUTLET PIPE IS RECOMMENDED. (LABELED WITH *).
 4. FINAL CONCRETE THICKNESS PER LOCAL ENGINEERING REGULATIONS AND GUIDELINES.
- CONSTRUCTION NOTES:
1. INSTALLATION TO BE COMPLETED IN ACCORDANCE WITH MANUFACTURERS SPECIFICATIONS.
 2. SECURE OUTLET PIPE PRIOR TO CONCRETING OPERATIONS.
 3. FOR ILLUSTRATION ONLY — DO NOT SCALE

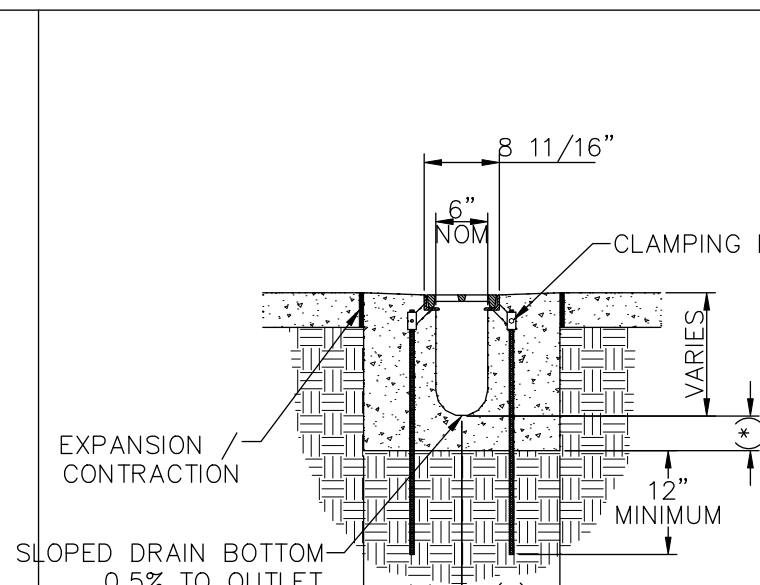


EconoDrain? Series #6
GRATE LOCKING DEVICE INSTALLATION



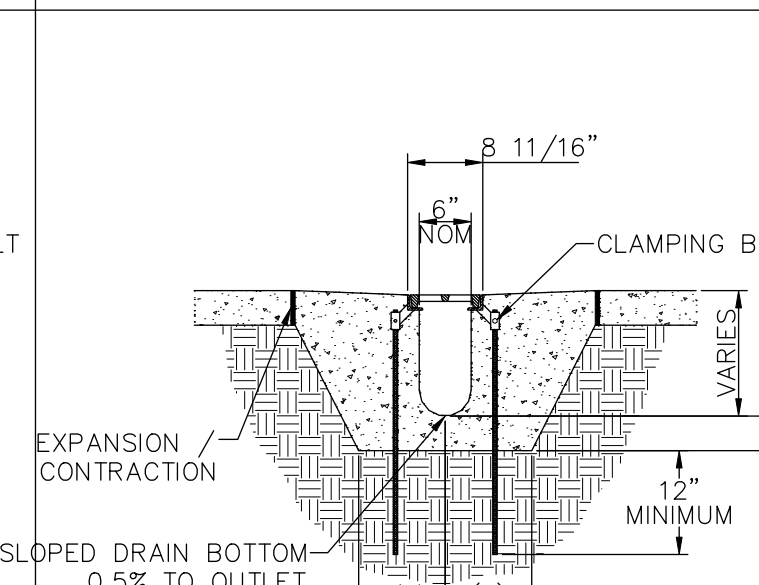
EconoDrain? Series #6
SUSPENDING FORMERS FROM EXISTING SLAB

- NOTES TO THE SPECIFIER:
1. ADD REBAR AS REQUIRED.
 2. SPECIFY REQUIRED DIMENSIONS LABELED WITH (*) USING 6" EACH SIDE OF STEEL FRAME AND BELOW EPS FORM AS A RECOMMENDED MINIMUM.
 3. SHOW TOP OF GRATE ELEVATION IN PLAN VIEW
 4. EXPANSION / CONTRACTION JOINT PER LOCAL ENGINEERING REGULATIONS AND GUIDELINES
 5. STANDARD CHANNEL LENGTH IS 8'-0" (96")
 6. STANDARD CHANNEL SLOPE IS 0.5%



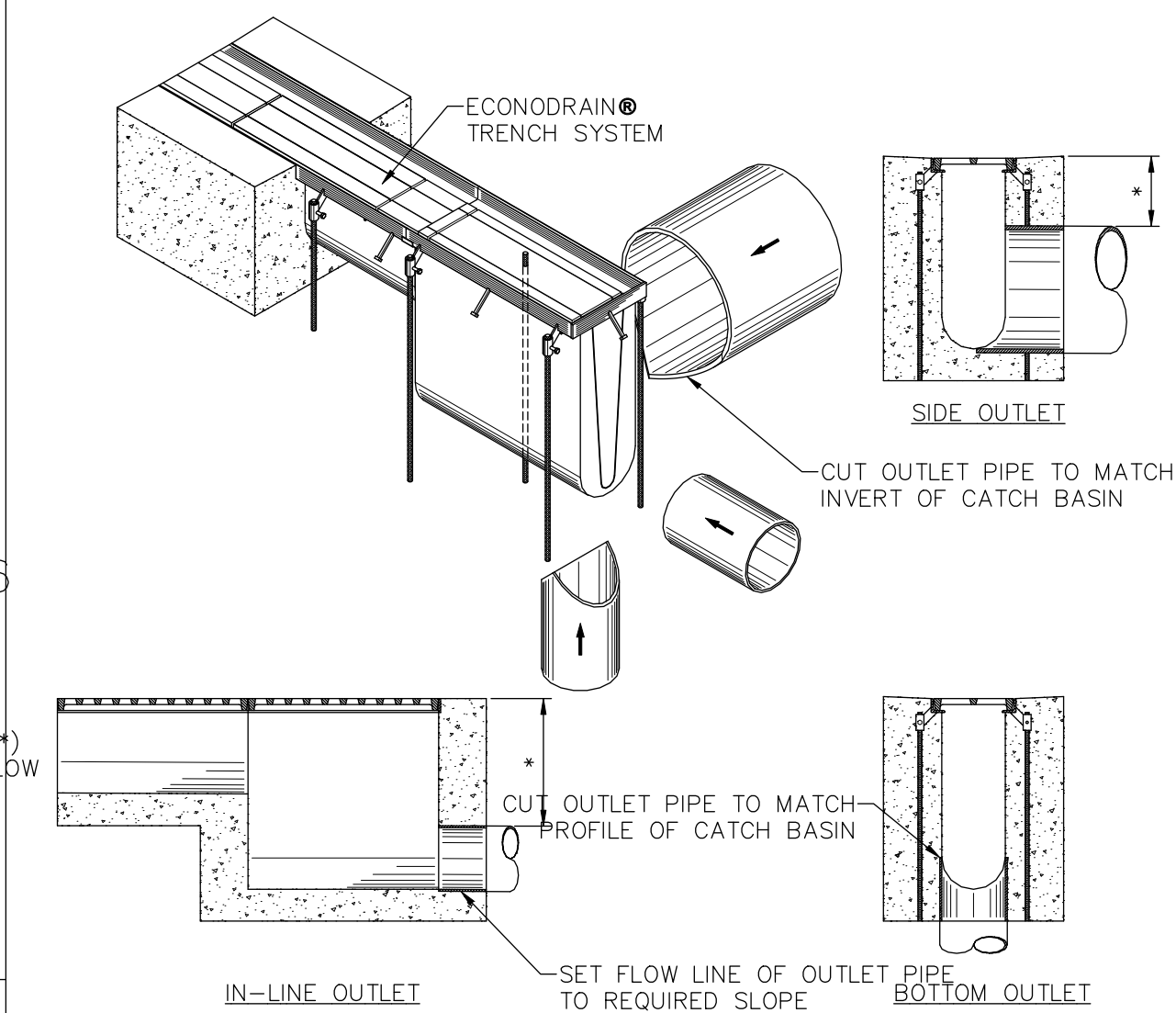
EconoDrain? Series #6
SAWCUT EXISTING SLAB INSTALLATION DETAIL

- NOTES TO THE SPECIFIER:
1. ADD REBAR AS REQUIRED.
 2. SPECIFY REQUIRED DIMENSIONS LABELED WITH (*) USING 6" EACH SIDE OF STEEL FRAME AND BELOW EPS FORM AS A RECOMMENDED MINIMUM.
 3. SHOW TOP OF GRATE ELEVATION IN PLAN VIEW
 4. EXPANSION / CONTRACTION JOINT PER LOCAL ENGINEERING REGULATIONS AND GUIDELINES
 5. STANDARD CHANNEL LENGTH IS 8'-0" (96")
 6. STANDARD CHANNEL SLOPE IS 0.5%



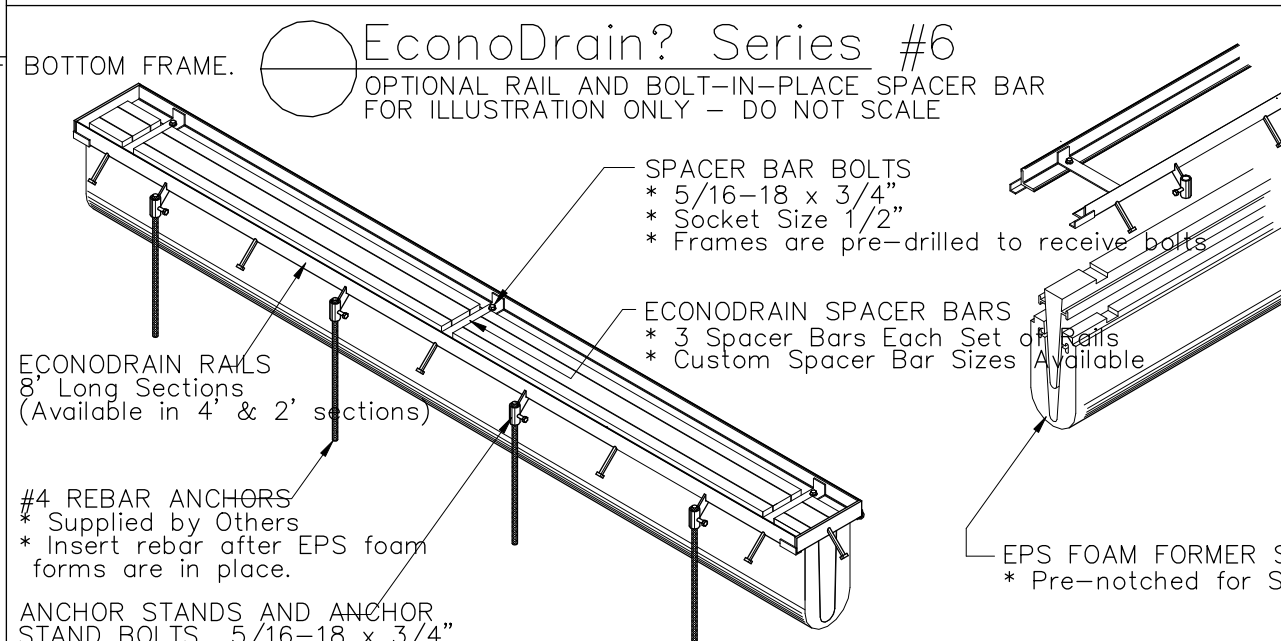
EconoDrain? Series #6
MONOLITHIC POUR INSTALLATION DETAIL

- NOTES TO THE SPECIFIER:
1. ADD REBAR AS REQUIRED.
 2. SPECIFY REQUIRED DIMENSIONS LABELED WITH (*) USING 6" EACH SIDE OF STEEL FRAME AND BELOW EPS FORM AS A RECOMMENDED MINIMUM.
 3. SHOW TOP OF GRATE ELEVATION IN PLAN VIEW
 4. EXPANSION / CONTRACTION JOINT PER LOCAL ENGINEERING REGULATIONS AND GUIDELINES
 5. STANDARD CHANNEL LENGTH IS 8'-0" (96")
 6. STANDARD CHANNEL SLOPE IS 0.5%



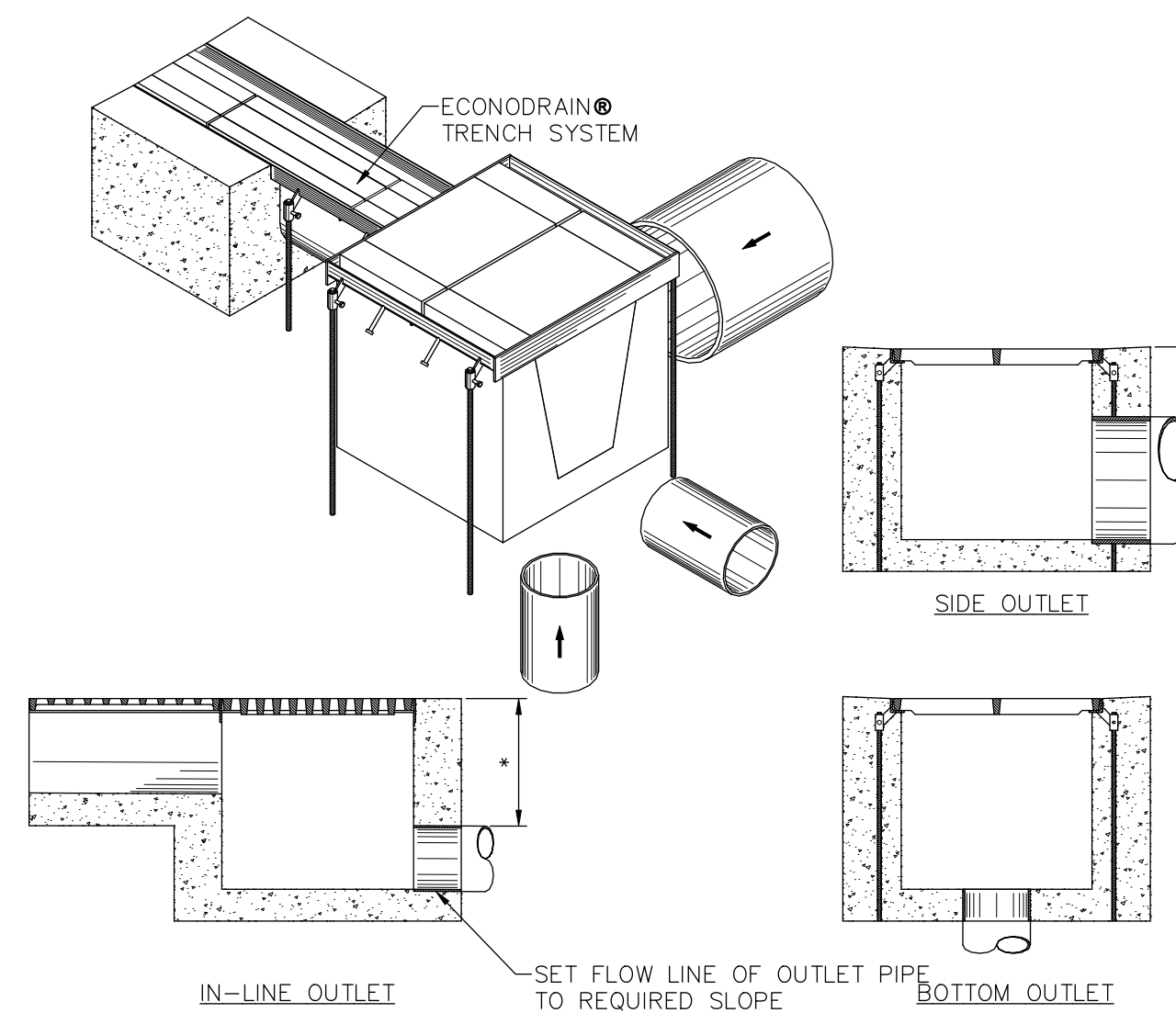
EconoDrain? Series #6
OUTLETS FROM IN-LINE CATCH BASIN
NOT TO SCALE

- NOTES TO THE SPECIFIER:
1. ADD REBAR AS REQUIRED.
 2. SPECIFY MINIMUM CONCRETE ENCASEMENT.
 3. 4" MINIMUM CONCRETE COVERAGE OF OUTLET PIPE IS RECOMMENDED. (LABELED WITH *).
 4. FINAL CONCRETE THICKNESS PER LOCAL ENGINEERING REGULATIONS AND GUIDELINES.
- CONSTRUCTION NOTES:
1. INSTALLATION TO BE COMPLETED IN ACCORDANCE WITH MANUFACTURERS SPECIFICATIONS.
 2. SECURE OUTLET PIPE PRIOR TO CONCRETING OPERATIONS.
 3. FOR ILLUSTRATION ONLY — DO NOT SCALE



EconoDrain? Series #6
OPTIONAL RAIL AND BOLT-IN-PLACE SPACER BAR
FOR ILLUSTRATION ONLY — DO NOT SCALE

- GENERAL NOTES:
1. ALL DIMENSIONS SHOWN ARE NOMINAL.
 2. THIS SYSTEM AVAILABLE WITH PRE-WELDED GRATE FRAMES (STANDARD) OR RAILS WITH BOLT-IN PLACE SPACER BARS (OPTIONAL)



EconoDrain? Series #6
OUTLET FROM CATCH BASIN
NOT TO SCALE

- NOTES TO THE SPECIFIER:
1. ADD REBAR AS REQUIRED.
 2. SPECIFY MINIMUM CONCRETE ENCASEMENT.
 3. 4" MINIMUM CONCRETE COVERAGE OF OUTLET PIPE IS RECOMMENDED. (LABELED WITH *).
 4. FINAL CONCRETE THICKNESS PER LOCAL ENGINEERING REGULATIONS AND GUIDELINES.
- CONSTRUCTION NOTES:
1. INSTALLATION TO BE COMPLETED IN ACCORDANCE WITH MANUFACTURERS SPECIFICATIONS.
 2. SECURE OUTLET PIPE PRIOR TO CONCRETING OPERATIONS.
 3. FOR ILLUSTRATION ONLY — DO NOT SCALE

EconoDrain? Series #6
ENGINEERING / CONSTRUCTION DETAIL TEMPLATE
© 2014 MultiDrain Systems, Inc.