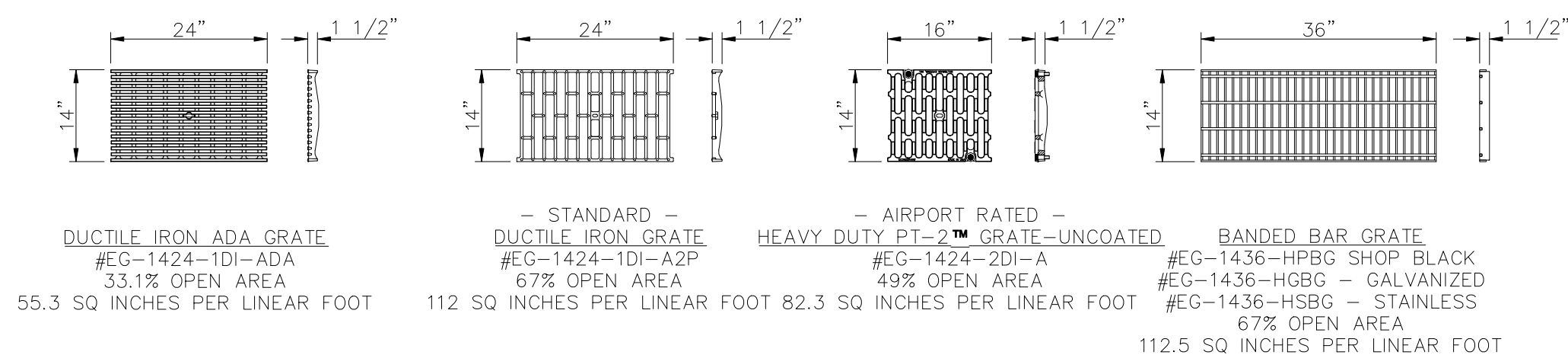
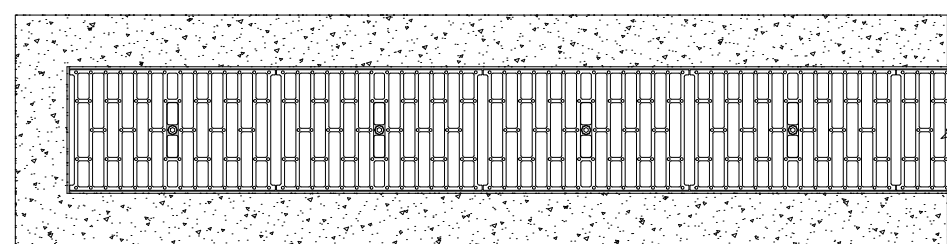


EconoDrain? Series #12
STANDARD EPS FORMS



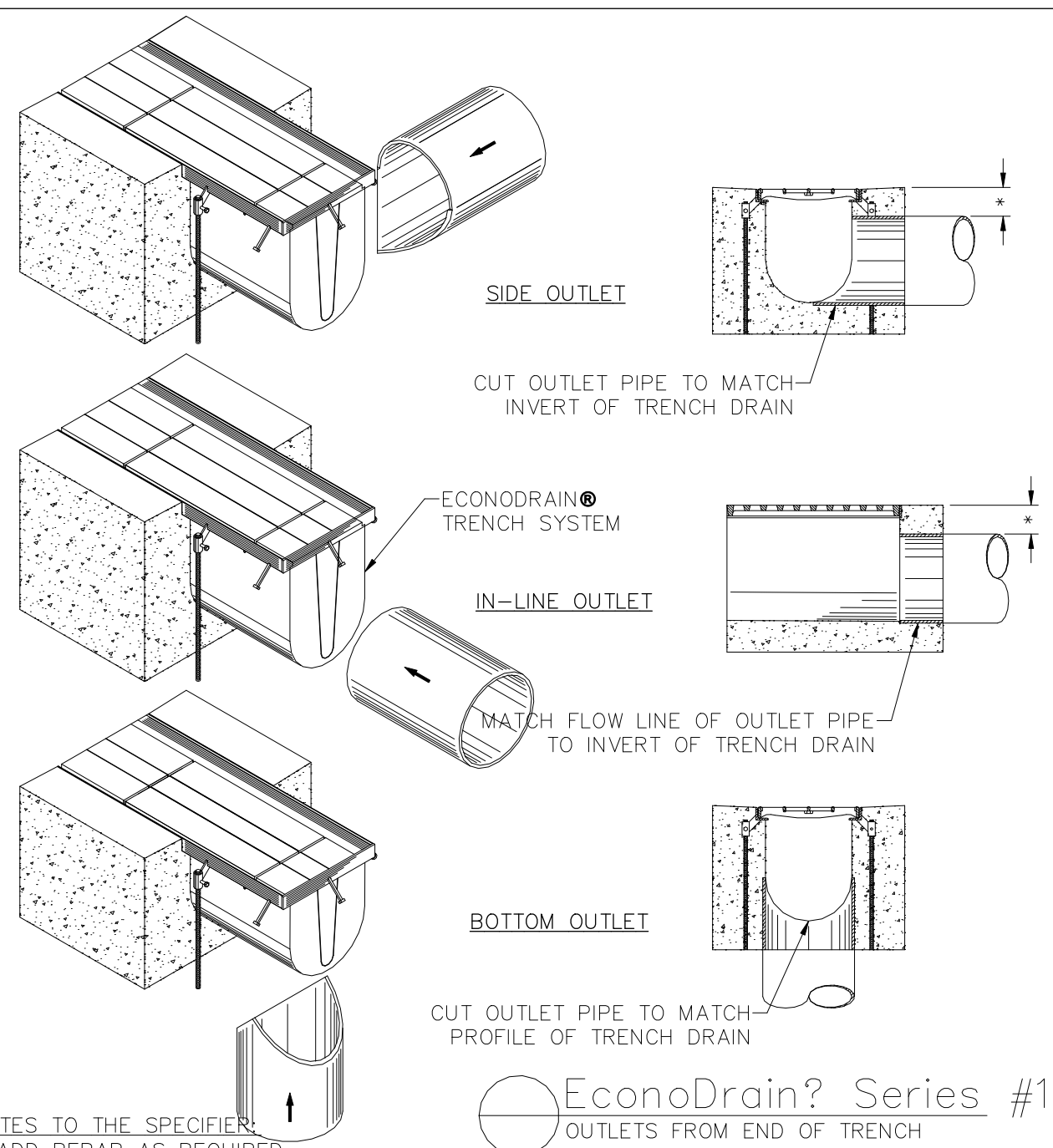
EconoDrain? Series #12
GRATE SELECTION



EconoDrain? Series #12
FINISHED PLAN VIEW

	EPS FORM	DEPTH		FLOW GPM
		MIN	MAX	
SHALLOW EPS FORMS	10	8"	8 1/2"	743
	11	8 1/2"	9"	829
	12	9"	9 1/2"	915
	13	9 1/2"	10"	1003
	14	10"	10 1/2"	1091
	15	10 1/2"	11"	1180
	16	11"	11 1/2"	1269
	17	11 1/2"	12"	1359
	18	12"	12 1/2"	1450
	19	12 1/2"	13"	1541
	20	13"	13 1/2"	1633
	21	13 1/2"	14"	1725
	22	14"	14 1/2"	1817
DEEP EPS FORMS	23	14 1/2"	15"	1910
	24	15"	15 1/2"	2002
	25	15 1/2"	16"	2095
	26	16"	16 1/2"	2189
	27	16 1/2"	17"	2282
	28	17"	17 1/2"	2376
	29	17 1/2"	18"	2470
	30	18"	18 1/2"	2564
	31	18 1/2"	19"	2658
	32	19"	19 1/2"	2753
	33	19 1/2"	20"	2847
	34	20"	20 1/2"	2942
	35	20 1/2"	21"	3036
	36	21"	21 1/2"	3131
	37	21 1/2"	22"	3226
	38	22"	22 1/2"	3321
	39	22 1/2"	23"	3416
	40	23"	23 1/2"	3511
	41	23 1/2"	24"	3607
	42	24"	24 1/2"	3702
	43	24 1/2"	25"	3798
	44	25"	25 1/2"	3893
	45	25 1/2"	26"	3989

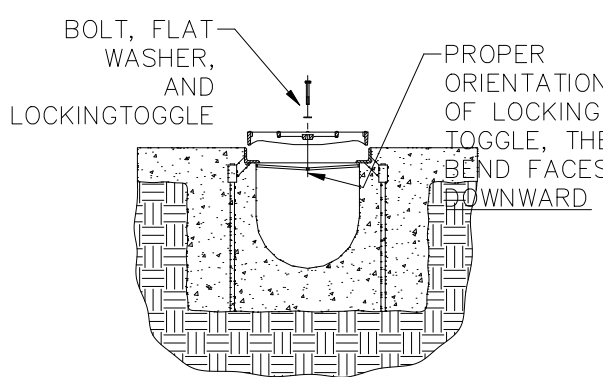
EPS FORM CHART



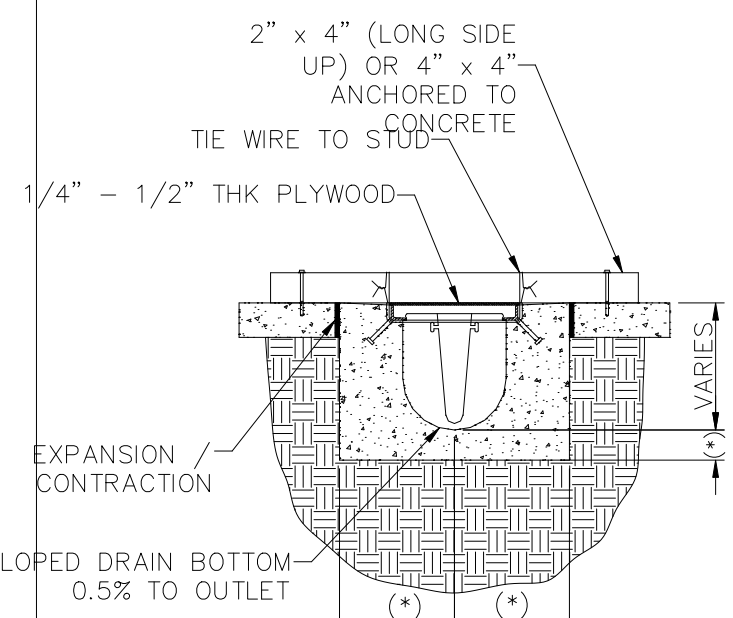
- NOTES TO THE SPECIFIER:
1. ADD REBAR AS REQUIRED.
 2. SPECIFY MINIMUM CONCRETE ENCASMENT.
 3. 4" MINIMUM CONCRETE COVERAGE OF OUTLET PIPE IS RECOMMENDED (LABELED WITH *).
 4. FINAL CONCRETE THICKNESS PER LOCAL ENGINEERING REGULATIONS AND GUIDELINES.

- CONSTRUCTION NOTES:
1. INSTALLATION TO BE COMPLETED IN ACCORDANCE WITH MANUFACTURERS SPECIFICATIONS.
 2. SECURE OUTLET PIPE PRIOR TO CONCRETING OPERATIONS.
 3. FOR ILLUSTRATION ONLY - DO NOT SCALE

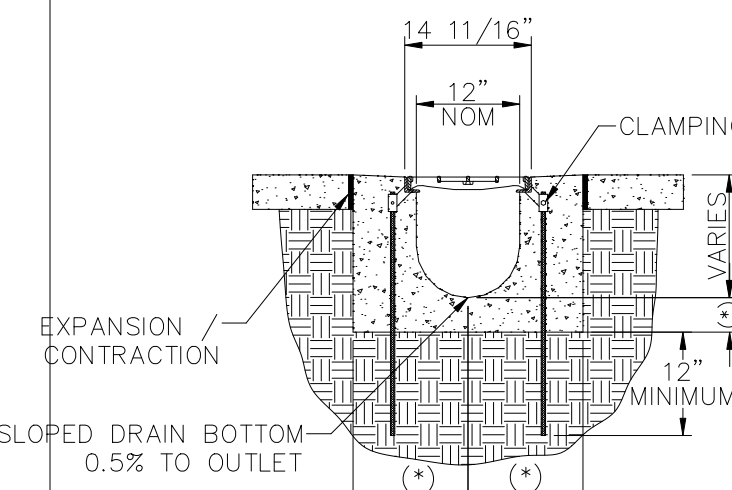
EconoDrain? Series #12
OUTLETS FROM END OF TRENCH



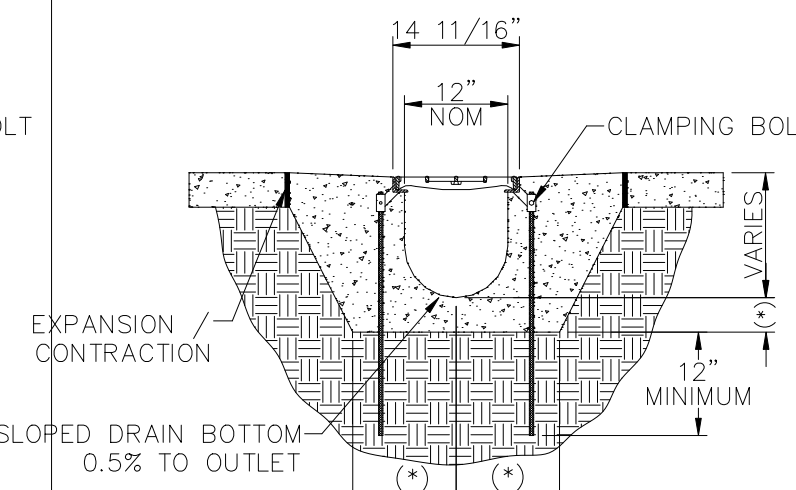
EconoDrain? Series #12
GRATE LOCKING DEVICE INSTALLATION



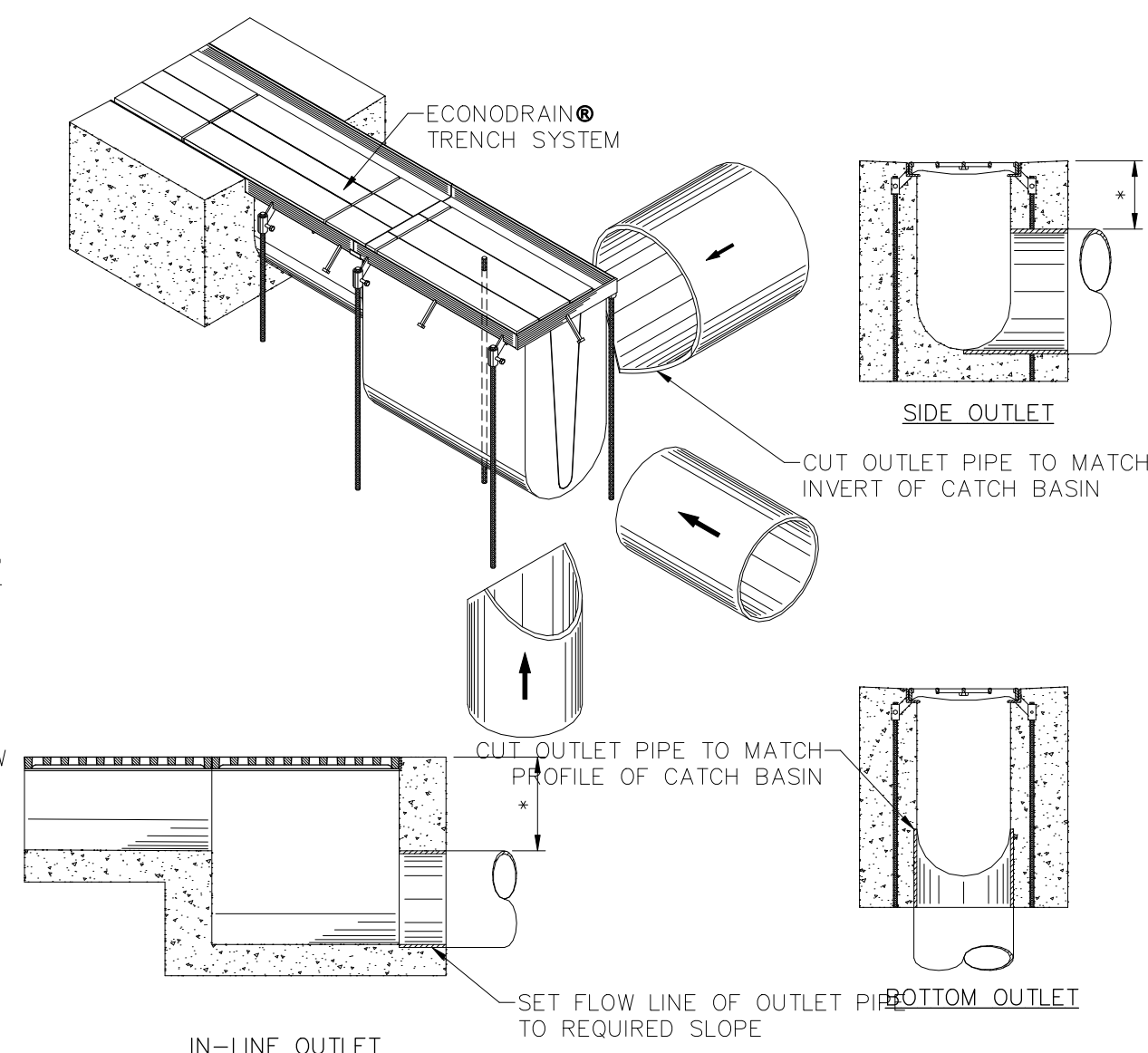
EconoDrain? Series #12
SAWCUT EXISTING SLAB INSTALLATION DETAIL



EconoDrain? Series #12
MONOLITHIC POUR INSTALLATION DETAIL



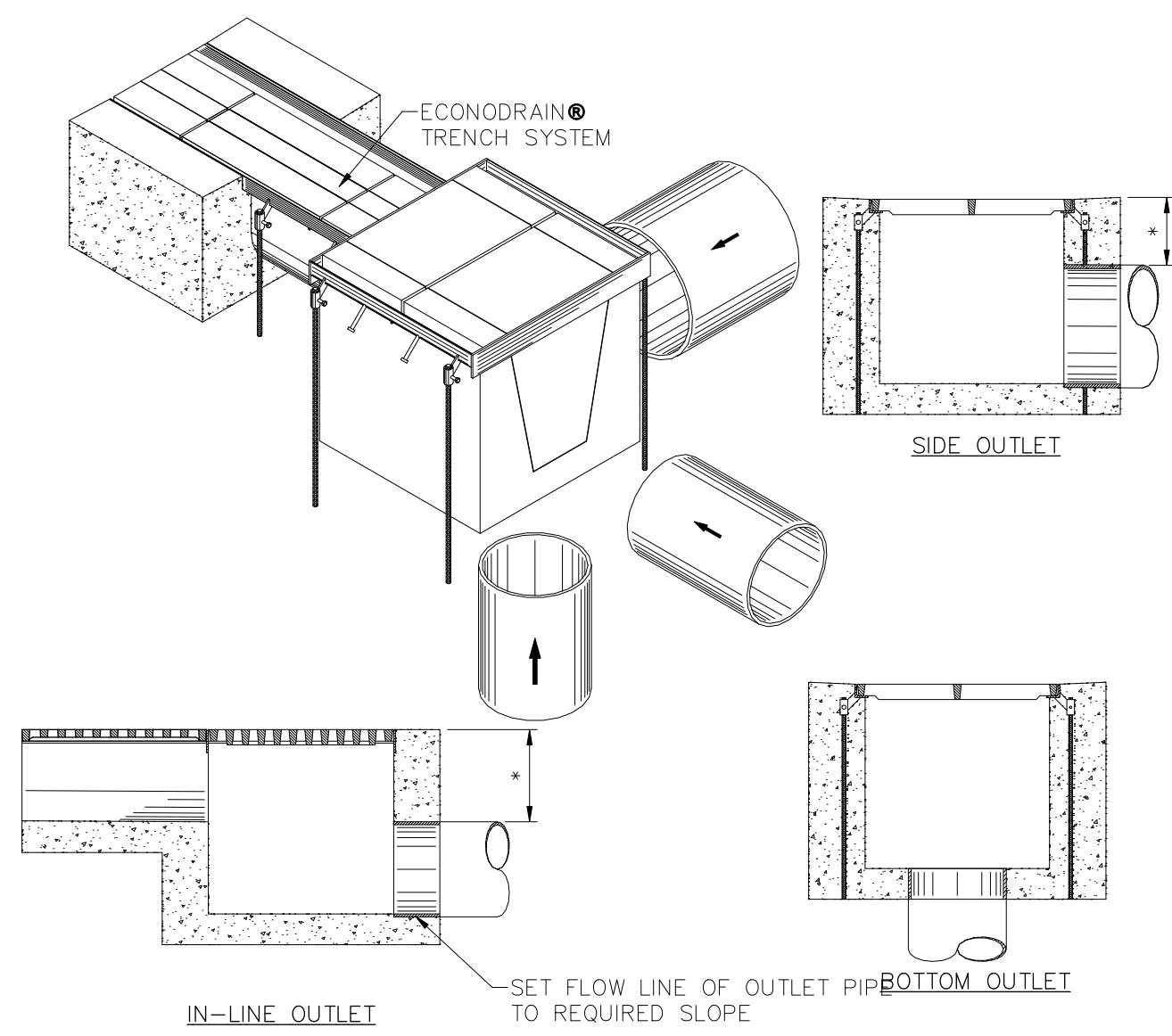
EconoDrain? Series #12
OUTLETS FROM IN-LINE CATCH BASIN



- NOTES TO THE SPECIFIER:
1. ADD REBAR AS REQUIRED.
 2. SPECIFY MINIMUM CONCRETE ENCASMENT.
 3. 4" MINIMUM CONCRETE COVERAGE OF OUTLET PIPE IS RECOMMENDED (LABELED WITH *).
 4. FINAL CONCRETE THICKNESS PER LOCAL ENGINEERING REGULATIONS AND GUIDELINES.

- CONSTRUCTION NOTES:
1. INSTALLATION TO BE COMPLETED IN ACCORDANCE WITH MANUFACTURERS SPECIFICATIONS.
 2. SECURE OUTLET PIPE PRIOR TO CONCRETING OPERATIONS.
 3. FOR ILLUSTRATION ONLY - DO NOT SCALE

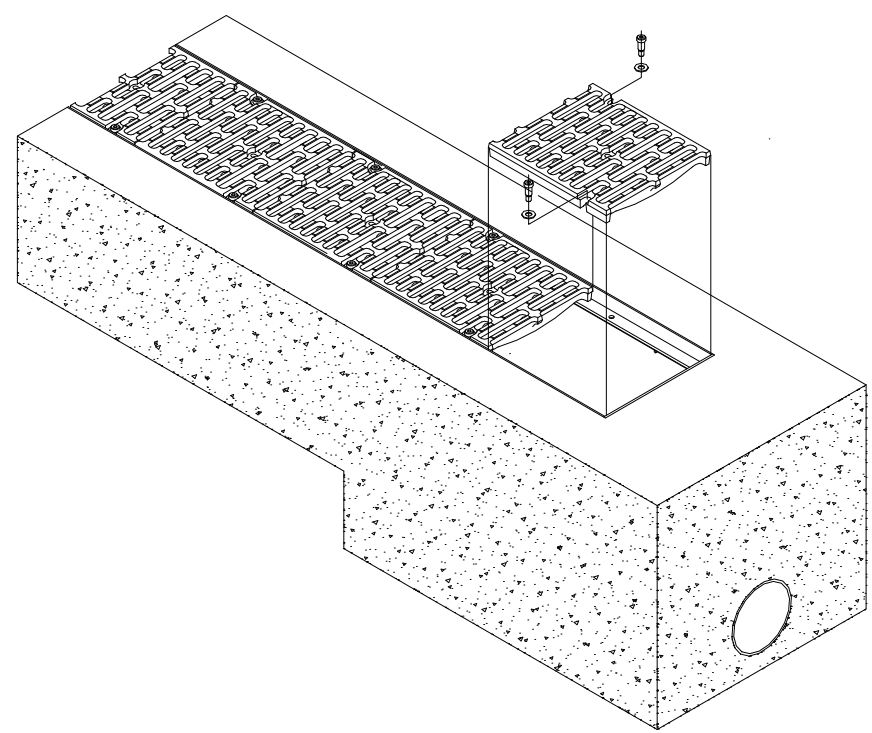
EconoDrain? Series #12
OUTLETS FROM IN-LINE CATCH BASIN



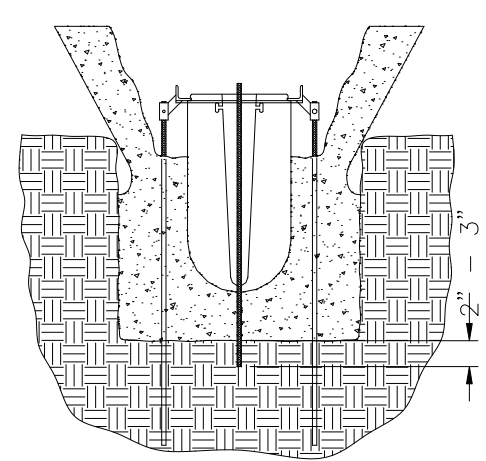
- NOTES TO THE SPECIFIER:
1. ADD REBAR AS REQUIRED.
 2. SPECIFY MINIMUM CONCRETE ENCASMENT.
 3. 4" MINIMUM CONCRETE COVERAGE OF OUTLET PIPE IS RECOMMENDED (LABELED WITH *).
 4. FINAL CONCRETE THICKNESS PER LOCAL ENGINEERING REGULATIONS AND GUIDELINES.

- CONSTRUCTION NOTES:
1. INSTALLATION TO BE COMPLETED IN ACCORDANCE WITH MANUFACTURERS SPECIFICATIONS.
 2. SECURE OUTLET PIPE PRIOR TO CONCRETING OPERATIONS.
 3. FOR ILLUSTRATION ONLY - DO NOT SCALE

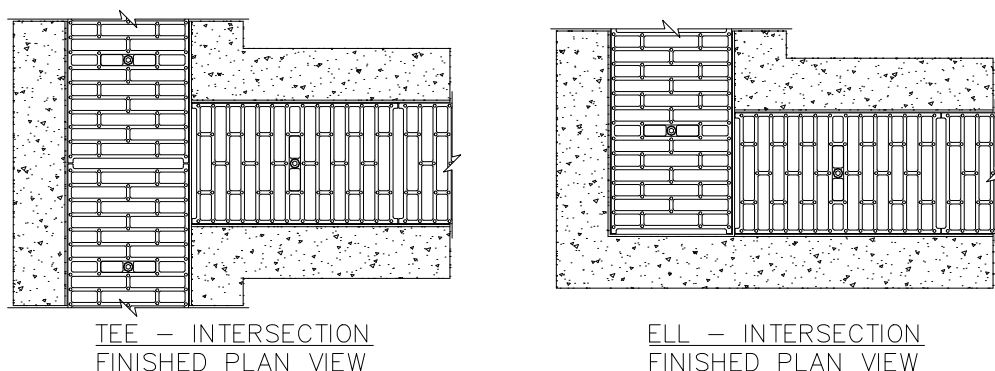
EconoDrain? Series #12
OUTLET FROM CATCH BASIN



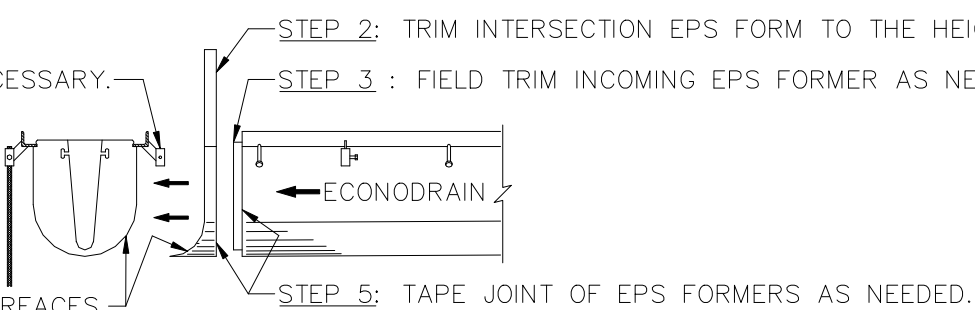
EconoDrain? Series #12
HEAVY DUTY PT-27 GRATE INSTALLATION



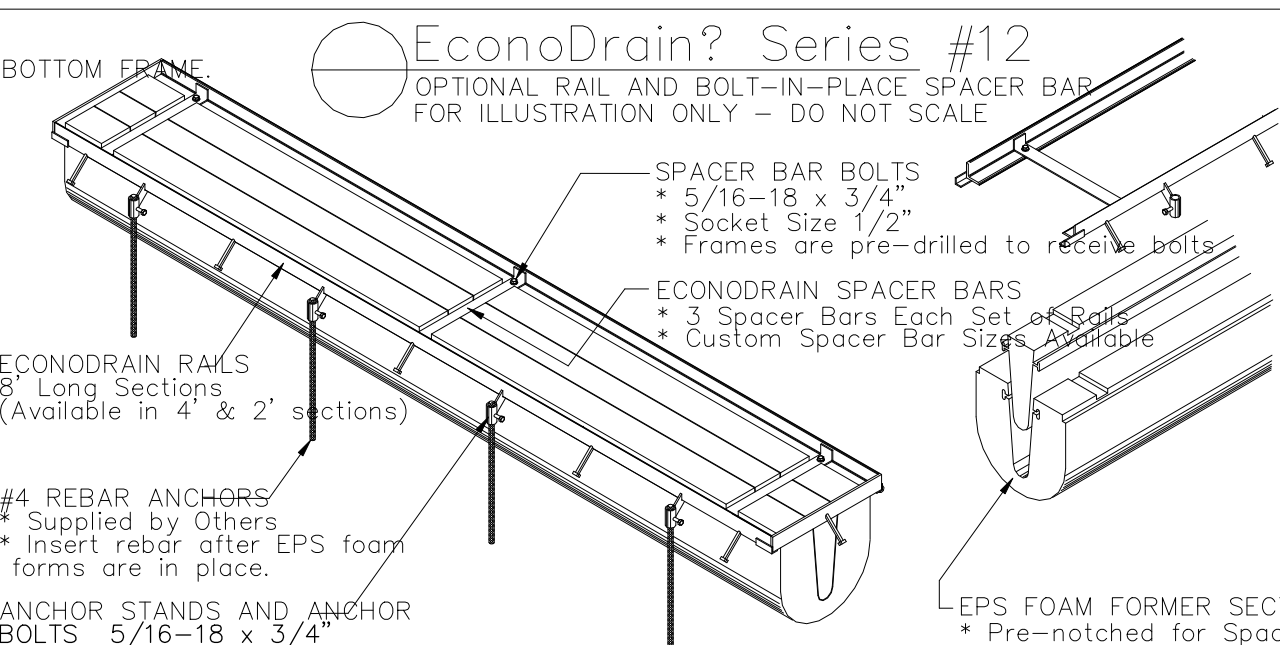
EconoDrain? Series #12
INSTALLING FORMERS IN DEEPER PORTION OF SYSTEM



EconoDrain? Series #12
TEE & ELL INTERSECTION KITS



EconoDrain? Series #12
TEE & ELL INTERSECTION KITS



- GENERAL NOTES:
1. ALL DIMENSIONS SHOWN ARE NOMINAL.
 2. THIS SYSTEM IS AVAILABLE WITH PRE-WELDED GRATE FRAMES (STANDARD) OR RAILS WITH OPTIONAL BOLT-IN PLACE SPACER BARS.

EconoDrain? Series #12
ENGINEERING / CONSTRUCTION DETAIL TEMPLATE
© 2014 MultiDrain Systems, Inc.